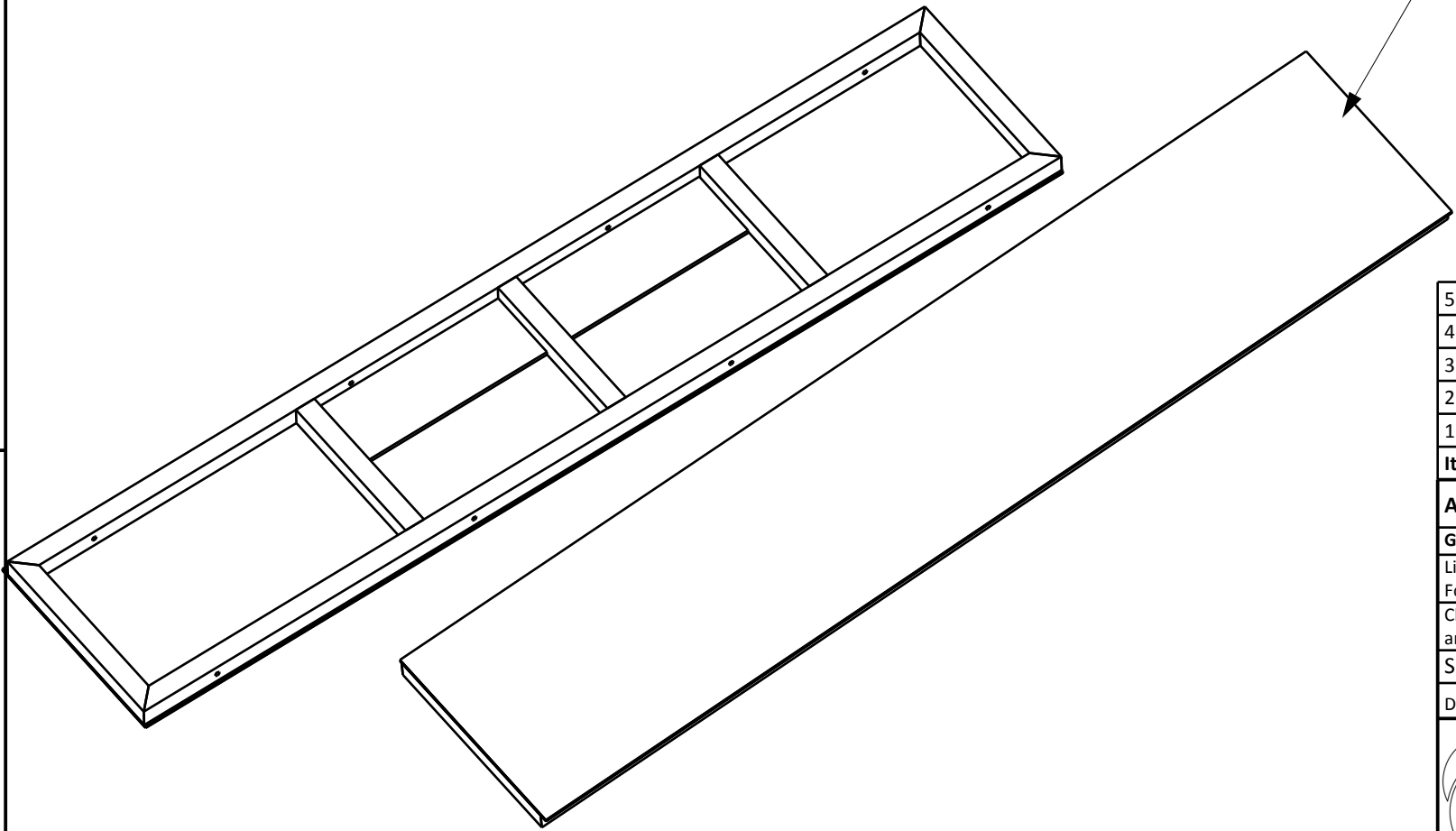
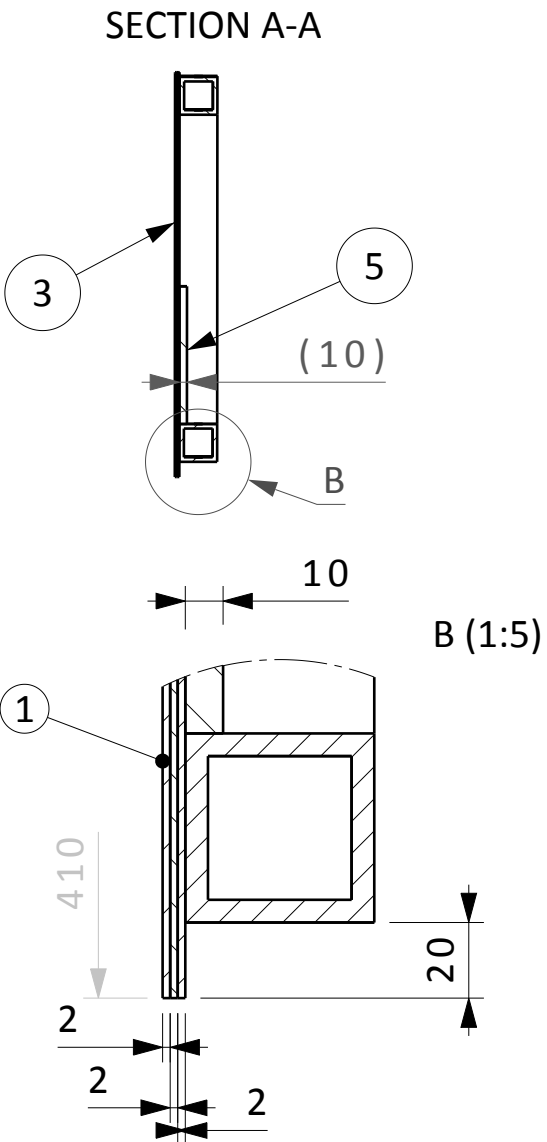


Begins with 2mm Aluminium - 2mm Lead -and on top 2mm Aluminium
Glued together and Blind Riveted to the frame.



Rev.#	Reason for change	ECO Number	ECO Initiator	Date of issue
1	Review of ISSC	ESS-0264232	saverioardovino	13/03/2018



5	ESS-0184775	2	ESS-0184775	-	Plate 10 mm	Aluminium	-	-
4	ESS-0183550	3	ESS-0183550	-	-	-	-	-
3	ESS-0136279	1	ESS-0136279	-	-	-	-	-
2	ESS-0183543	2	ESS-0183543	-	-	-	-	-
1	ESS-0175843	2	ESS-0175843	Ion Source Safety Cage	-	-	-	-
Item	Part Number	Qty	CAD Number	Title	Description	Material	Material std	Material cert.
ASSY WEIGHT: - kg				DRAWING TYPE; TITLE; SUPPLEMENTARY TITLE				
General Tolerances				Ion Source Safety Cage				
Linear Dimensions, Form and Position:				ISO 2768-mK	Frame			
Chamfers, Radii and Angular Dim's:				ISO 2768-vK	MODELED BY	DRAWING CREATED	DRAWING NUMBER	
SURFACE FINISH Min. Ra 3.2				Documentation protection as per ISO 16016	saverioardovino	12/03/2018	ESS-0183544.2	
					DRAWN BY	DRAWING RELEASED		
					saverioardovino	19/03/2018		
					CHECKED BY		LIFECYCLE LABEL	REV.
					saverioardovino		Release	1
					APPROVED BY		SHEET	1/1
					saverioardovino			
					QUALITY CONTROLLED BY		LEVEL OF MATURITY	MC
							A	M4
							SIZE	SCALE
							A3	1:10
							Produced to ISO 1101, 8015 and 1302	