



Doc. No.: 9000015594

Rev.: A

Date: 22-03-2017

Supplier: Bondy

Make:

Ordering Code: LMEFP20-A

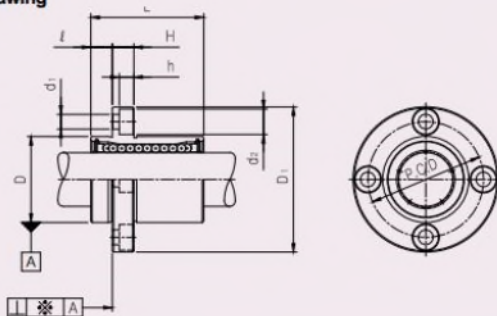
Item: Pilot Flanged Linear Bushing

Note:

EUROPEAN STANDARD LINEAR BUSHING(LME)

## LMEFP FLANGED LINEAR BUSHING

### • Drawing



### • Part Number Notation

**LMEFP 20 UU - A N S**



- European Standard Samick Circular Pilot Flanged Linear B
- Nominal Shaft Diameter
- Seal
 

Blank	No Seal
UU	Both Side Seal
U	One Side Seal
- Retainer (material)
 

Blank	Resin Retainer(Standard)
A	Steel Retainer(High temperature)*1
- Outer-sleeves (by corrosion resistance)
 

Blank	Standard(SUJ2)
N	Electroless nickel plating
R	Raydent treatment
- Ball type (material)
 

Blank	High carbon bearing steel ball(Standard)
S	Stainless steel ball

\*1 Steel retainer applicable from LMEFP8 to LMEFP25 only

EUROPEAN STANDARD LINEAR BUSHING(LME)

## LMEFP FLANGED LINEAR BUSHING

PART NUMBER	WORKING BORE DIAMETER		D		L		D <sub>1</sub>		I	H	PCD	d <sub>1</sub>	d <sub>2</sub>	h	SQUAREDNESS μ(m)	BASIC LOAD RATING(N)		NO. OF BALL ROW	WEIGHT (g) <sup>1</sup>
	Resin	Steel	d <sub>r</sub> (mm)	CLEAR NCE (mm)	mm	CLEAR NCE (mm)	mm	CLEAR NCE (mm)								DYNAMIC (C)	STATIC (Co)		
LMEFP8UU		LMEFP8-A	8	+0.008 0	16 0	25 -0.008	32	0	5	5	24	3.4	6.5	3.3	12	260	400	4	44
LMEFP12UU		LMEFP12-A	12		22	0	32	0	6	6	32	4.5	8	4.4	12	410	580	4	86
LMEFP16UU		LMEFP16-A	16	+0.009 -0.001	26	0	36	0	6	6	36	4.5	8	4.4	12	770	1170	5	120
LMEFP20UU		LMEFP20-A	20		32	0	45	0	8	8	43	5.5	9.5	5.4	15	880	1370	5	184
LMEFP25UU		LMEFP25-A	25	+0.011 -0.001	40	0	56	0	8	8	51	5.5	9.5	5.4	15	980	1560	6	335
LMEFP30UU			30		47	0	68	0	10	10	62	6.6	11	6.5	15	1560	2740	6	545
LMEFP40UU			40		62	0	80	0	13	13	80	9	14	8.6	20	2150	4010	6	1185
LMEFP50UU			50	+0.013 -0.002	75	0	100	0	13	13	94	9	14	8.6	20	3820	7930	6	1730
LMEFP60UU			60		90	0	125	0	18	18	112	11	17.5	10.8	25	4700	9990	6	3180

- \*1 Dynamic load rating is based on the nominal life of 50km  
In case of 100km, C on the table need to be divided by 1.26  
Ex) 50km basic dynamic load rating(C) of LMEFP12 = 410N  
100km basic dynamic load rating(C=1) of LMEFP12 = 410/1.26 = 325.40N
- \*2 Based on the weight of resin retainer
- \*3 Main unit : m
- \*4 1N = 0.102kgf