



Doc. No.: 9000015889

Rev.: -

Date: 27-08-2018

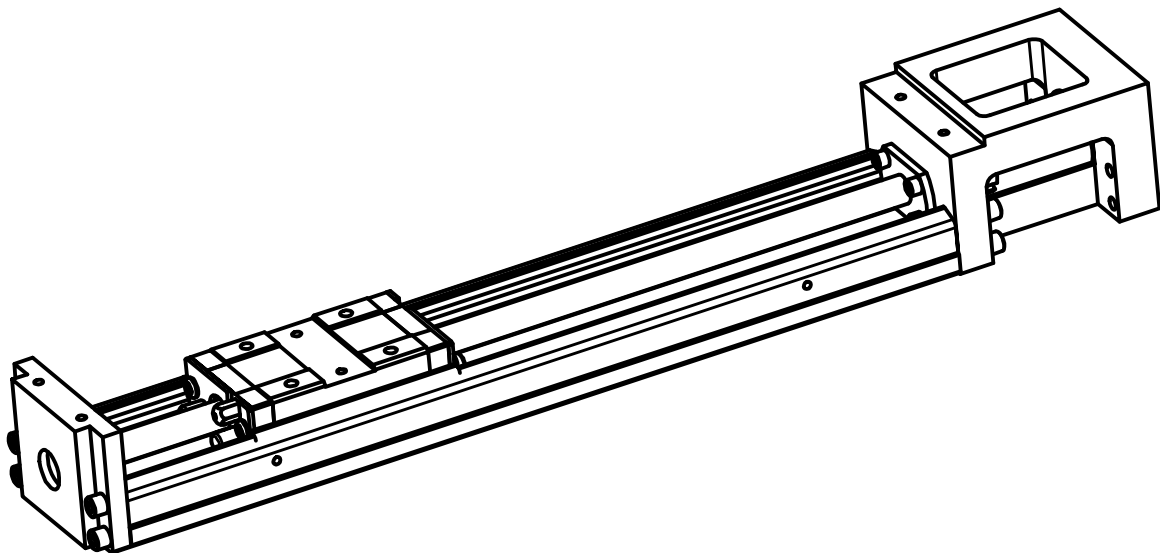
Supplier: Bondy

Make: HIWIN

Ordering Code: KK5002P250A1F0000

Item: Linear axaes. Stroke 170 mm

Note:



Product finder

Product finder Linear Axes Spindle drive axis Steel axis KK Standard block

KK50 linear axes without cover

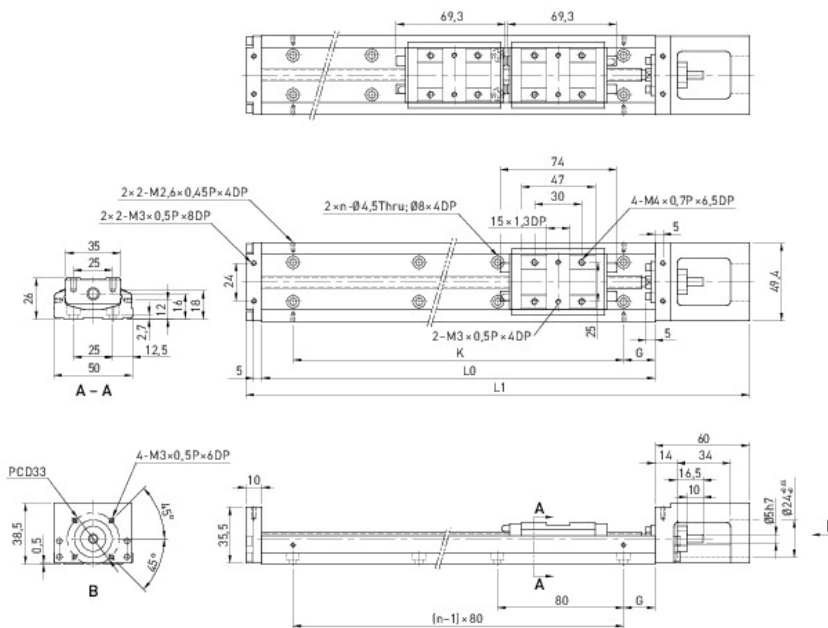


Table Dimensions and weights of KK50 linear axes without cover

Model	Lead [mm]	L0 [mm]	L1 [mm]	Maximum stroke [mm]		G [mm]	K [mm]	n	m	Weight [kg]		CAD
				Block A1	Block A2					Block A1	Block A2	
KK5002P0250	2	250	320	170	105	45	160	3	—	1,4	1,6	CAD

Reference edge

Viewed from the motor flange, the reference edge is located on the left side of the linear axis.

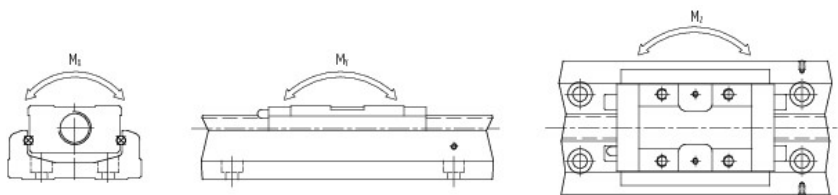


Table Load ratings and torques of linear guideway

Model	C _{dyn} [N]	C ₀ [N]	Block A1			Block A2			CAD
			M _X [Nm]	M _Y [Nm]	M _Z [Nm]	M _X [Nm]	M _Y [Nm]	M _Z [Nm]	
KK5002P0250	8007	12916	222	116	116	444	545	545	CAD

Table Load capacity of linear axes KK: Ballscrew and fixed bearing

Model	Shaft			Fixed side		CAD
	Ø [mm]	C _{dyn} [N]	C ₀ [N]	C _{0 axial} [N]	F _{max axial} [N]	
KK5002P0250	8	2136	3489	1910	1500	CAD