



Doc. No.: 9000015893

Rev.: -

Date: 28-08-2018

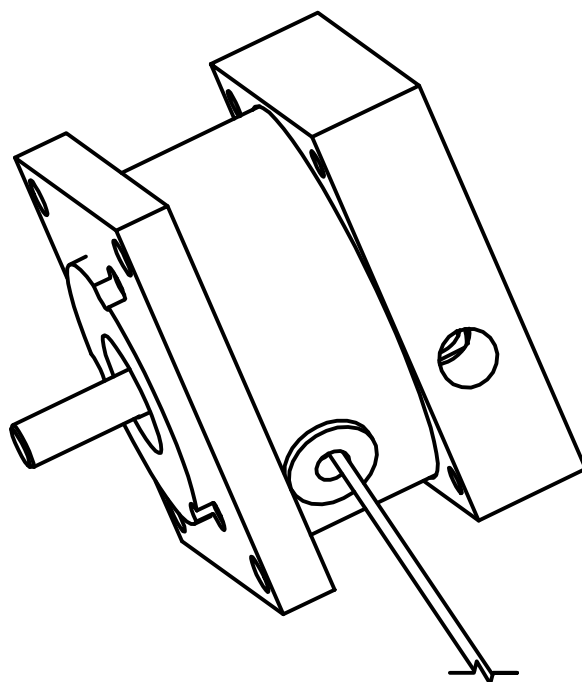
Supplier: Inertia Dynamics ([www.idicb.com](http://www.idicb.com))

Make:

Ordering Code: NEMA MPC23

Item: Power-off Brake

Note: No sharp edges

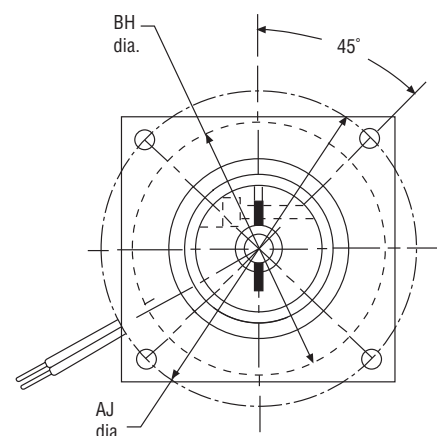
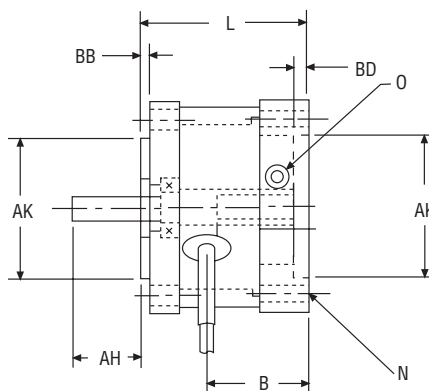
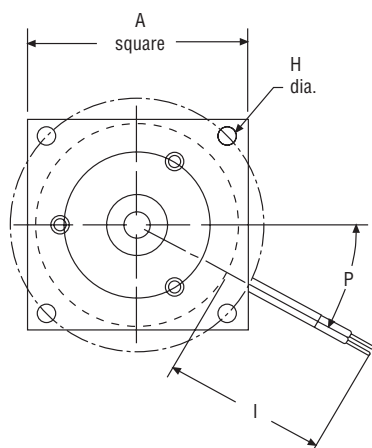
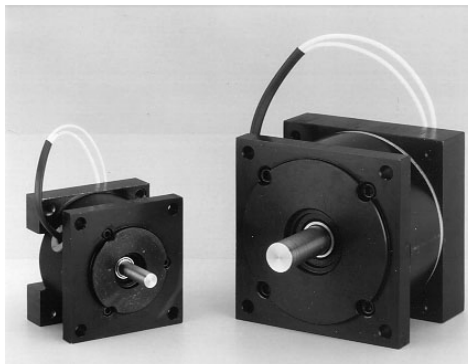


## Double C-Face Power-Off Brakes – MPC

## Double C-Face Power-Off Brakes for Nema 17, 23, 34 and 42 Frames

### MPC – Brake Only Module (Power-Off) with Output Shaft C-Face

The MPC is a power-off brake module with an output shaft. The unit mounts on a C-Face motor, and the output can be coupled to a C-Face gear reducer. Ideal for creating brake/motor packages on smaller servo and stepper frame motors.



### Dimensions

MODEL NO.	FRAME SIZE	SHAFT & HUB DIA.	A	AH <sup>1</sup>	AJ	AK	B	BB	BD	BH	H	N	I	L	O***	P
MPC17	17	3/16	1.65	.71	1.725	.866	.82	.080	.100	1.50	(4) #4-40-2B	(4X) .125	11.50	1.57	#4-40	60
MPC23	23	1/4*	2.25	.70	2.625	1.500	1.18	.10	.145	2.13	(4X) .205	(4) #10-24-2B	16.75	1.876	#6-32	30
MPC34	34	1/2*	3.25	1.16	3.875	2.875	1.58	.10	.145	2.878	(4X) .222	(4) #10-24-2B	18.00	2.578	1/4-28	15
MPC42	42	5/8**	4.25	1.23	4.950	2.189	2.27	.10	.125	3.50	(4X) .320	(4) 3/8-18-2B	18.00	4.056	1/4-28	90

\*23 and 34 frame also available in 3/8" bore.

\*\*42 frame also available with 3/8" and 1/2" hub and shaft.

\*\*\*Socket head cap screw for clamp collar.

<sup>1</sup> Alternate shaft lengths available – consult factory.

### Mechanical

MODEL NO.	STATIC TORQUE LB.-IN. <sup>1</sup>	INERTIA LB. – IN. <sup>2</sup>	WGT. OZ.
MPC17	1	.0024	7
MPC23	3	.0087	17
MPC34	15	.1120	46
MPC42	50	.2060	96

<sup>1</sup>Also available in higher torque sizes – consult Inertia Dynamics for more information.

### Electrical

MODEL NO.	90 VDC		24 VDC		12 VDC		120 VAC
	AMPS	OHMS	AMPS	OHMS	AMPS	OHMS	AMPS
MPC17	.051	1880	.220	117	.430	30	.044
MPC23	.041	2177	.182	132	.353	34	.048
MPC34	.098	922	.369	65.1	.719	16.7	.077
MPC42	.194	465	.717	35.5	.154	7.8	.140

**See page 36 for ordering information**

## Ordering Information

### MPC PART NUMBERING SYSTEM