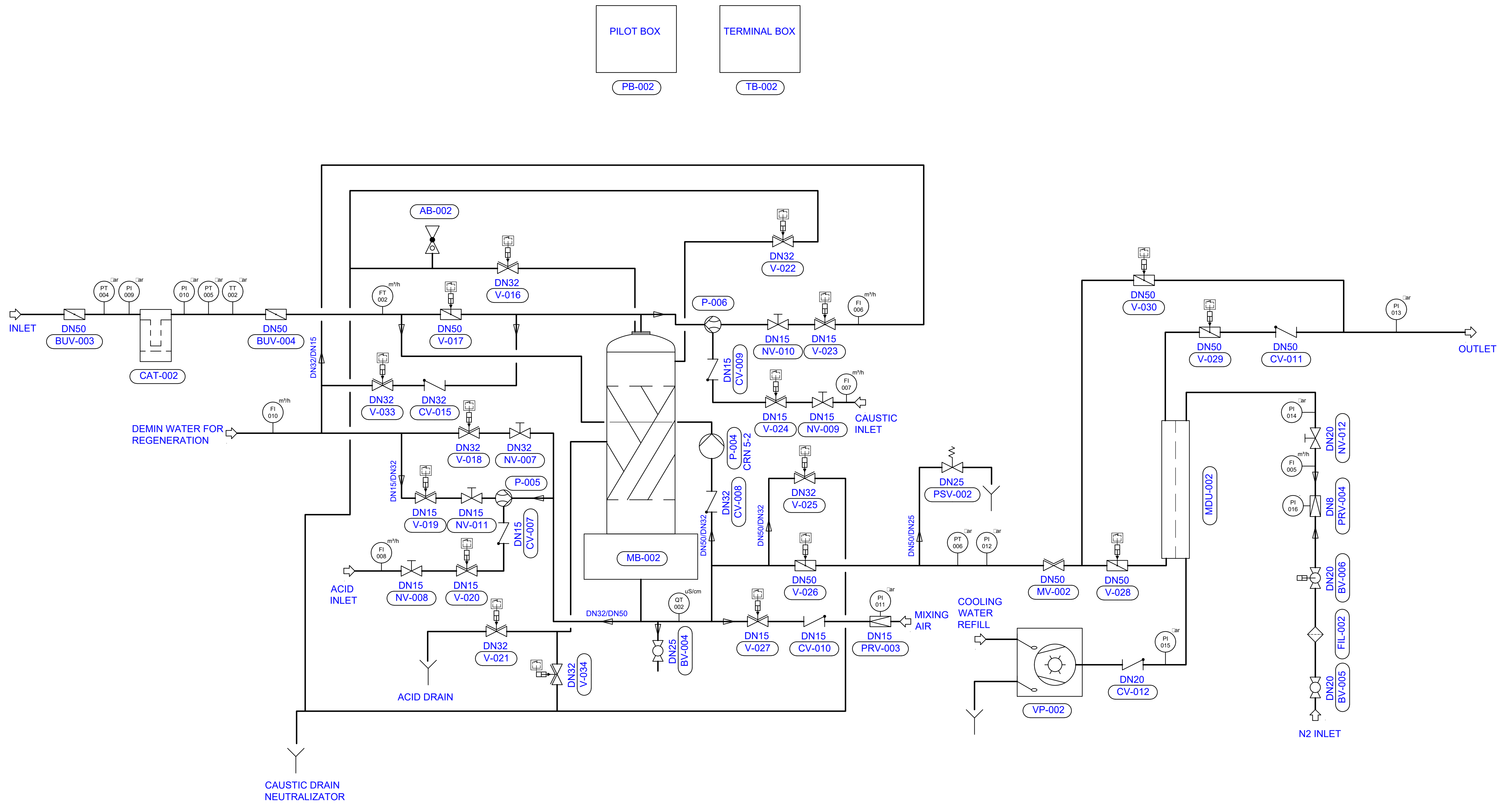


EUROWATER

SILHORKO-EUROWATER A/S
DK-8660 SKANDERBORG
PHONE +45 87938300

ORDREN NR.: ON125801	KONTROLLERET AF: X41526	GODKENDT AF: DATO:	SIGN: UDH
EW-Sweden EES Project			DATO: 12-12-2016
P&I-DIAGRAM MIXED BED 40 m³/h MBA Ø1000 MDU 1-10x28 CNVP		UPDATE: 18.01.17 UDH	MAL: 1:1
REV. MKK	RETTELSE	DATO SIGN: 10.01.17 UDH	TEGN. NR.: 125801-1
			REV.: 2

Denne tegning tilhører SILHORKO-EUROWATER A/S og må ikke anvendes eller kopieres uden SILHORKO-EUROWATER A/S tilladelse.

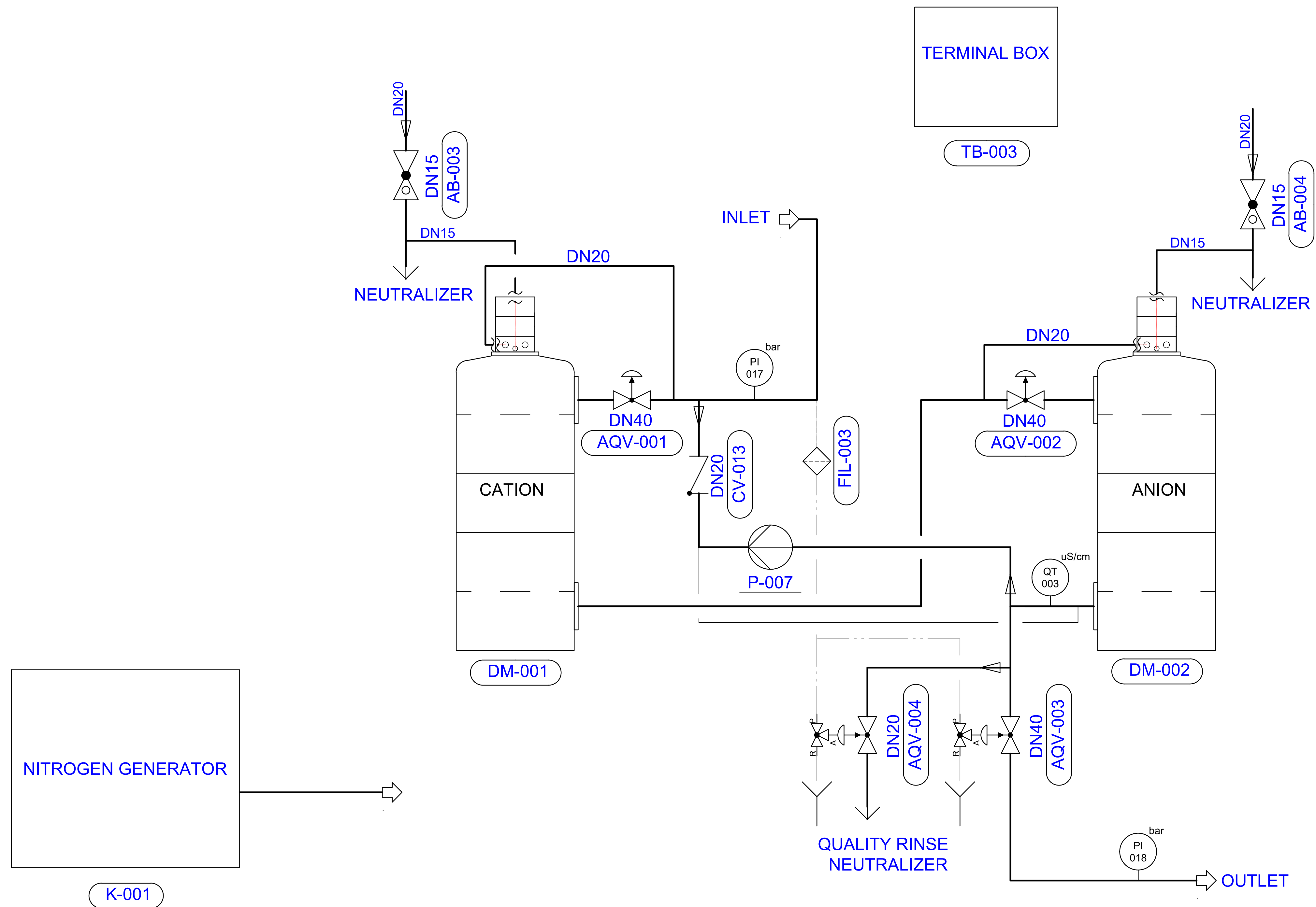


EUROWATER

SILHORKO-EUROWATER A/S
DK-8660 SKANDERBORG
PHONE +45 87938300

ORDRENR.: ON125801	KONTROLLERET AF: X41528	GODKENDT AF: DATO:
EW-SWEDEN EES PROJECT		SIGN. UDH
P&ID-DIAGRAM MIXED BED 20 m ³ /h MBA Ø700 MDU 1-10x28 CNVP		DATO 20-12-2016
REV. MRK.	RETTELSE	MAL 1:1
		TEGN. NR.: 125801-2
		REV. 2

Denne tegning tilhører SILHORKO-EUROWATER A/S og må ikke anvendes eller kopieres uden SILHORKO-EUROWATER A/S tilladelse.

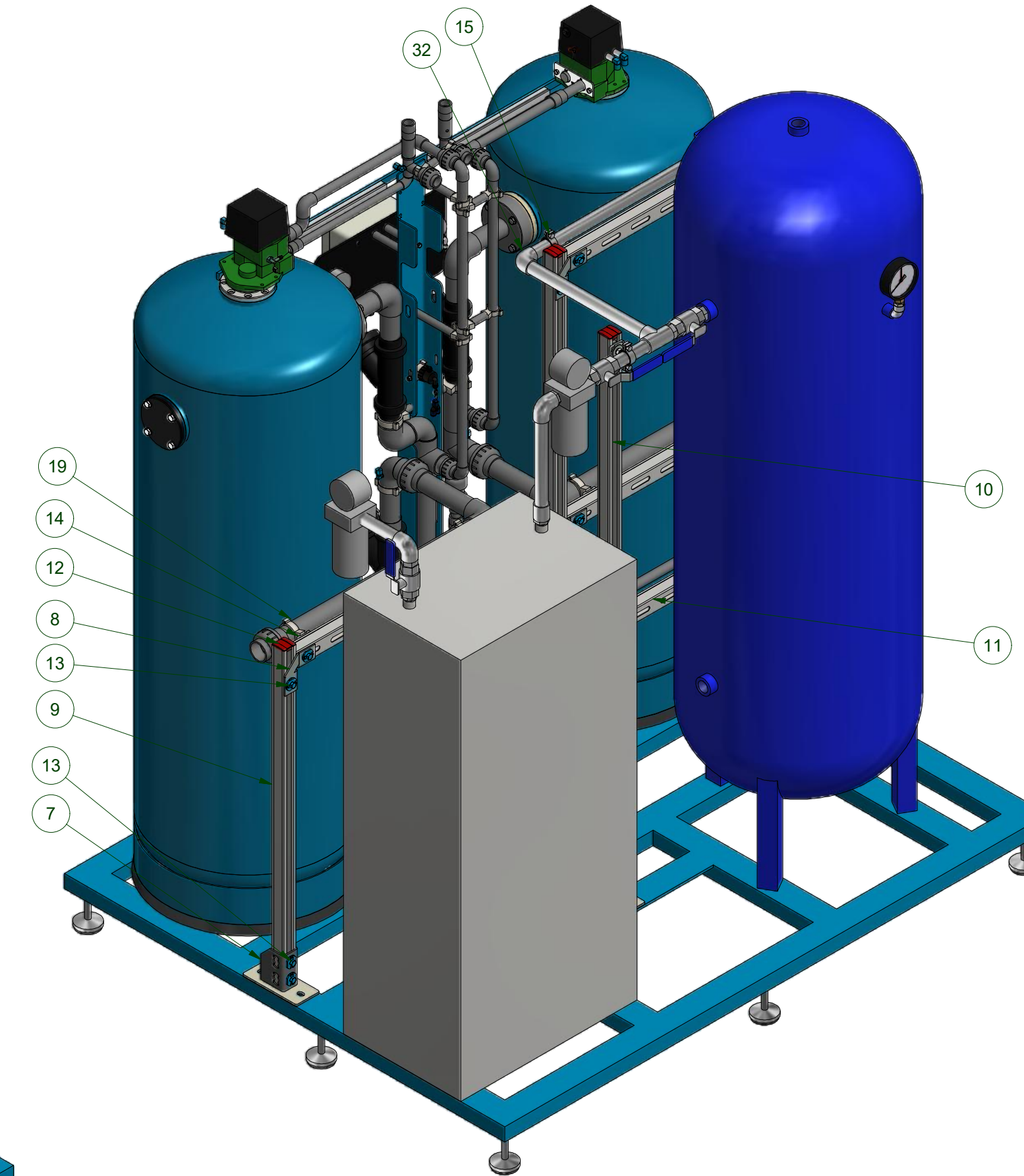
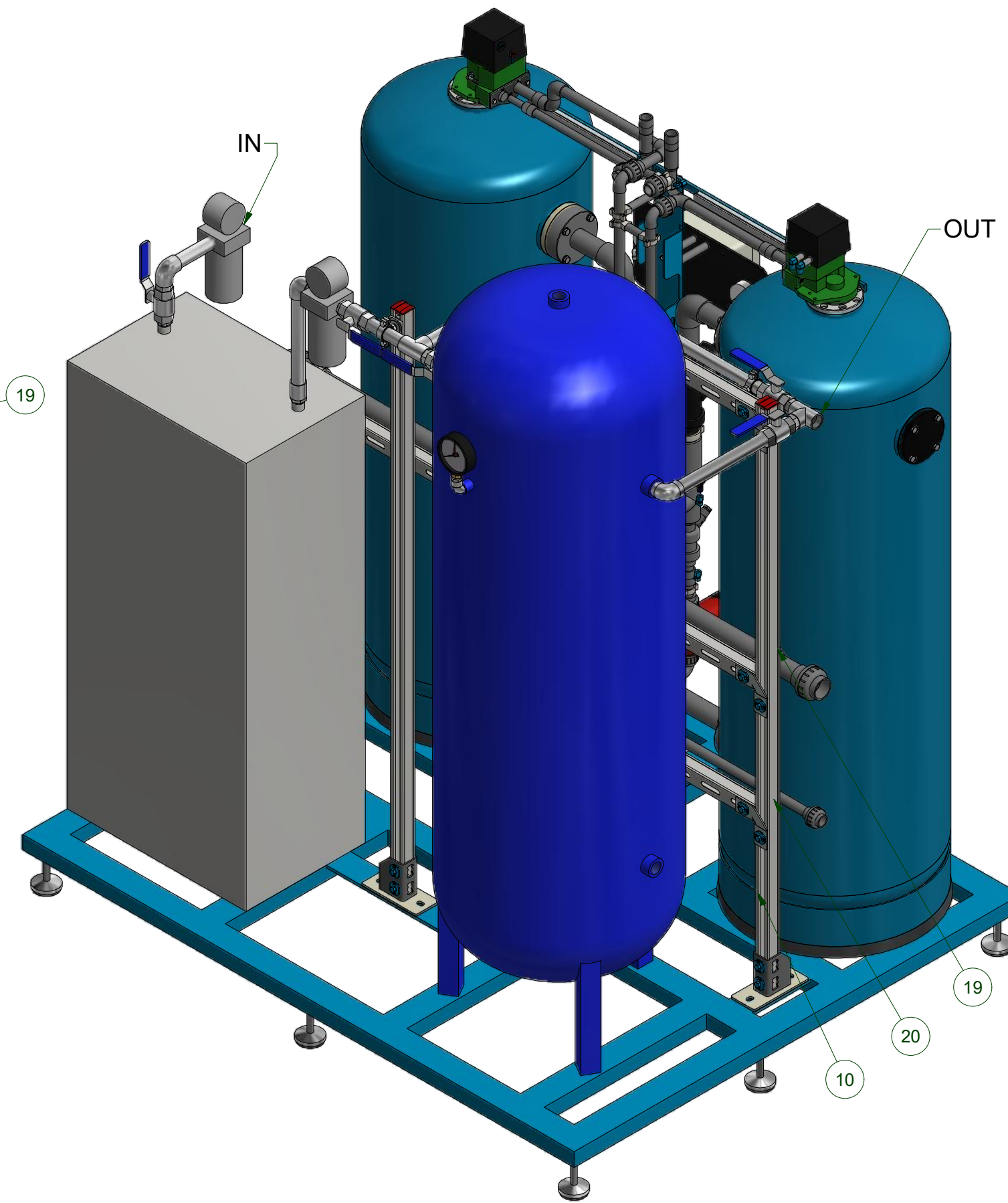
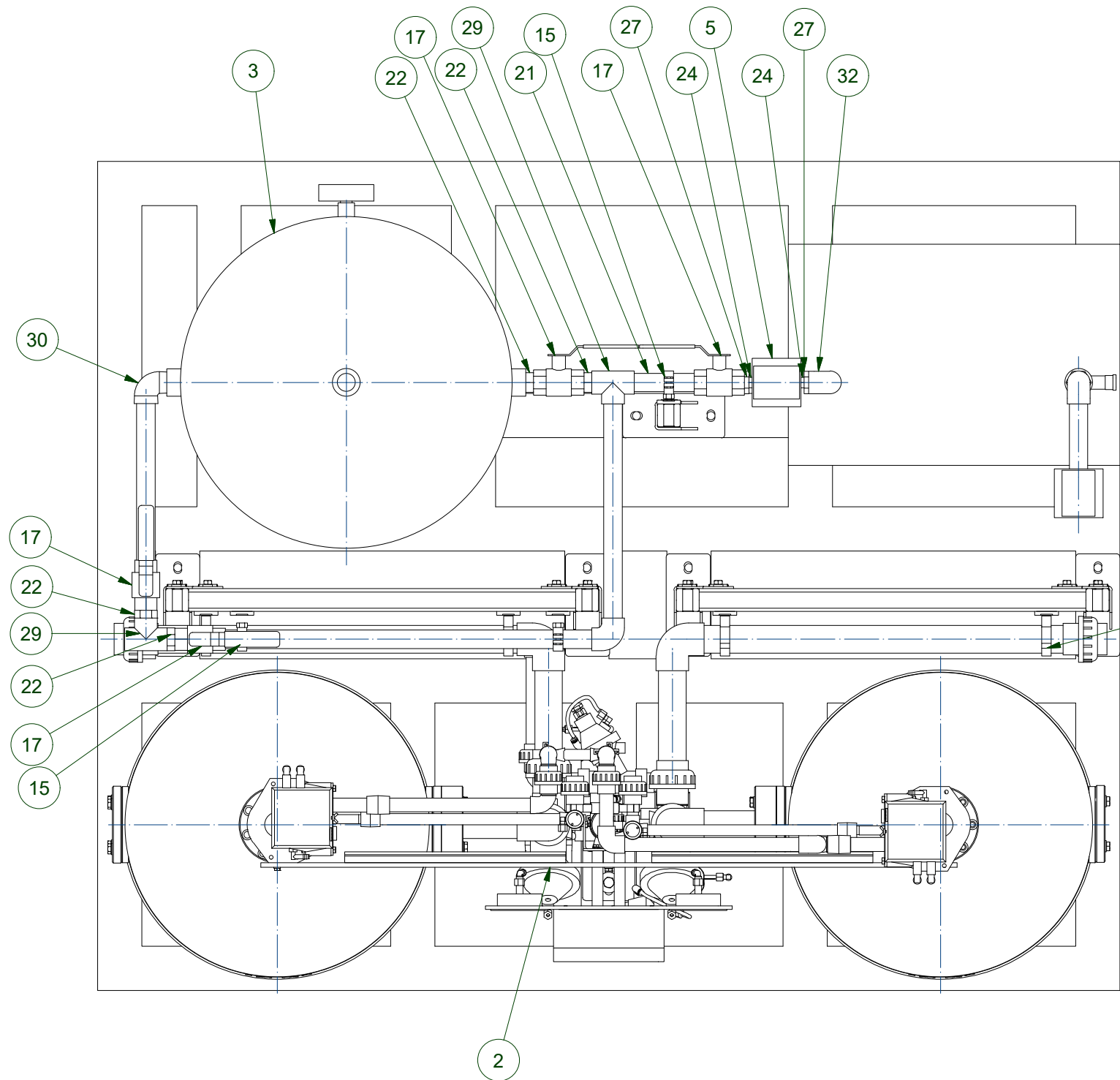
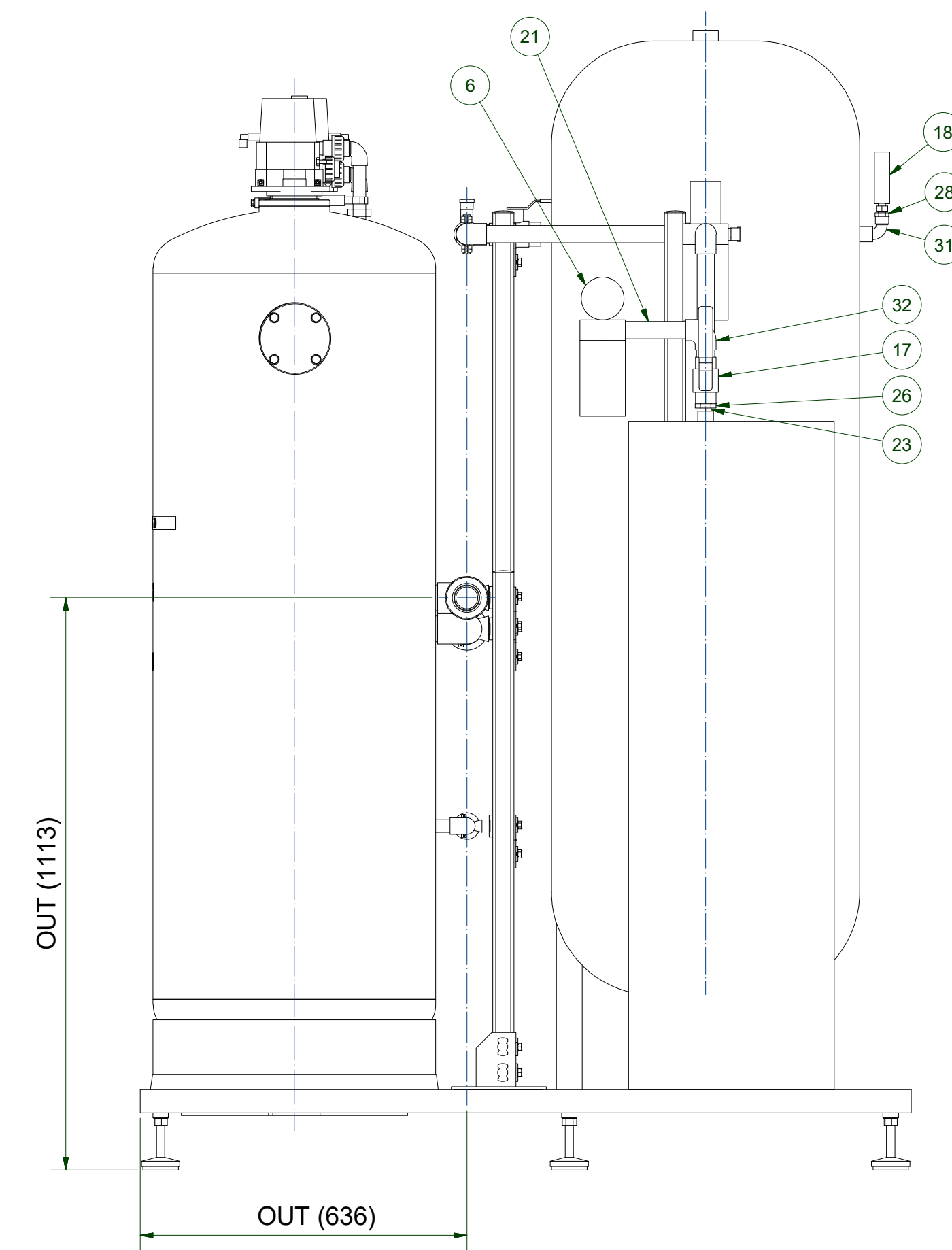
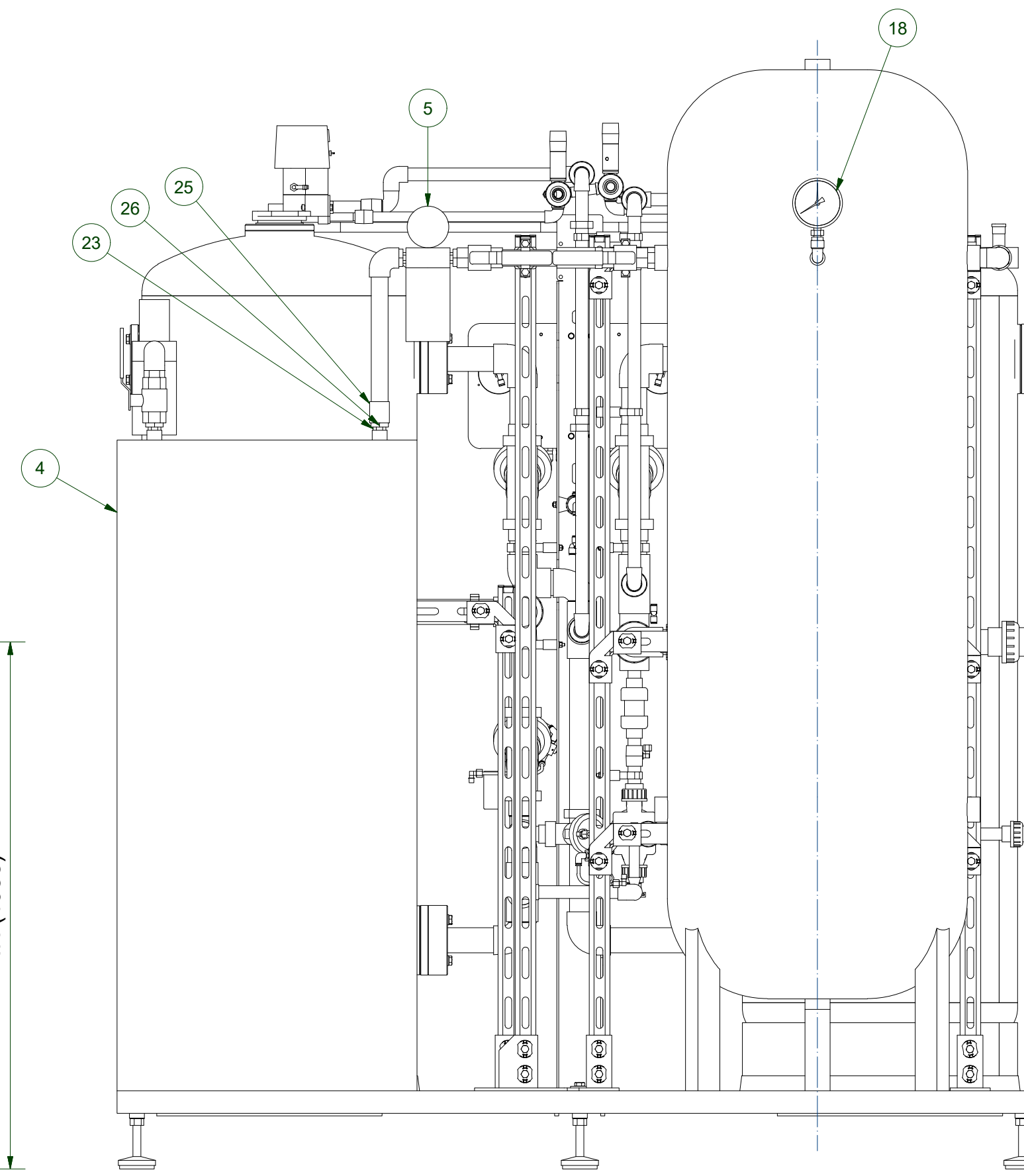
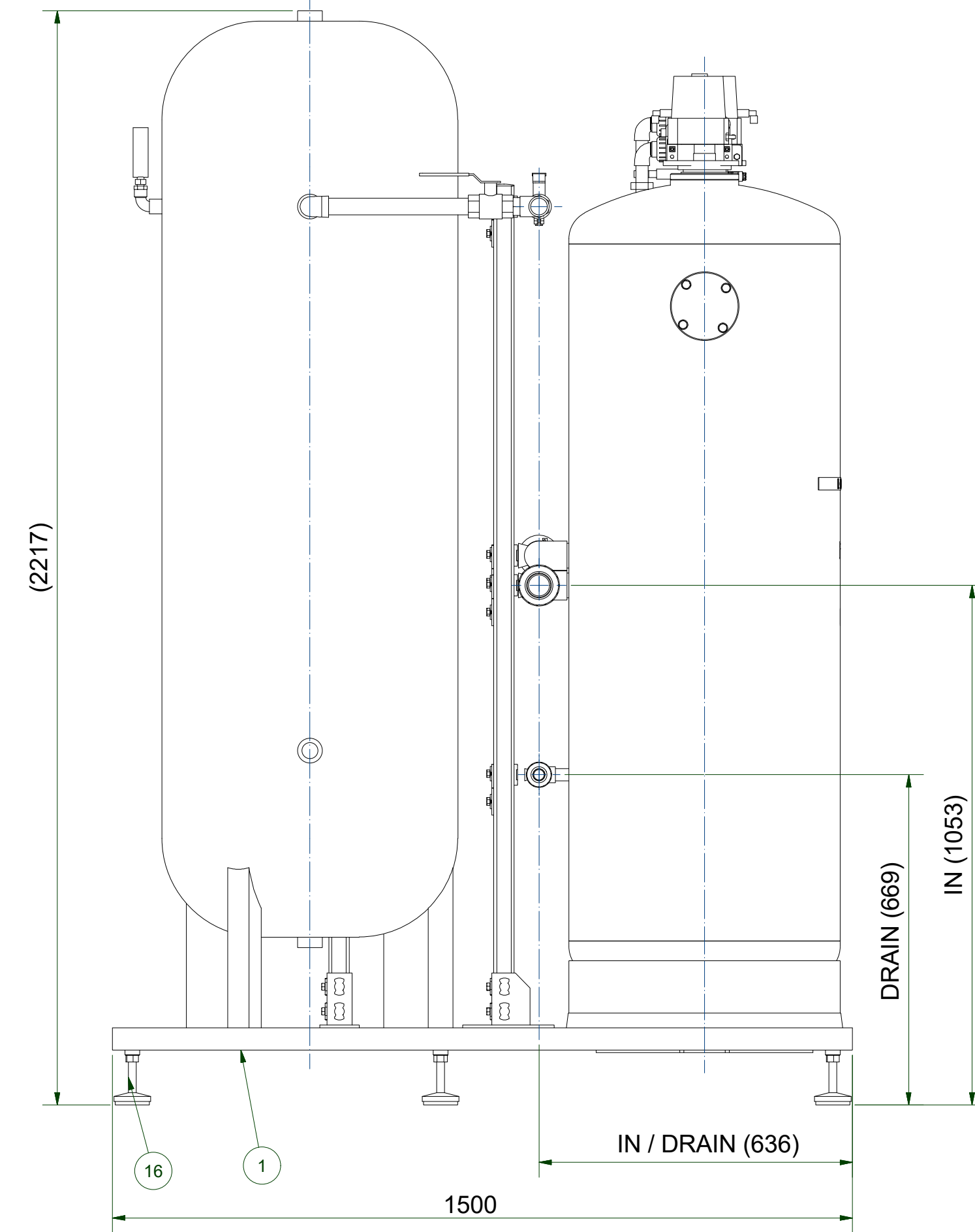
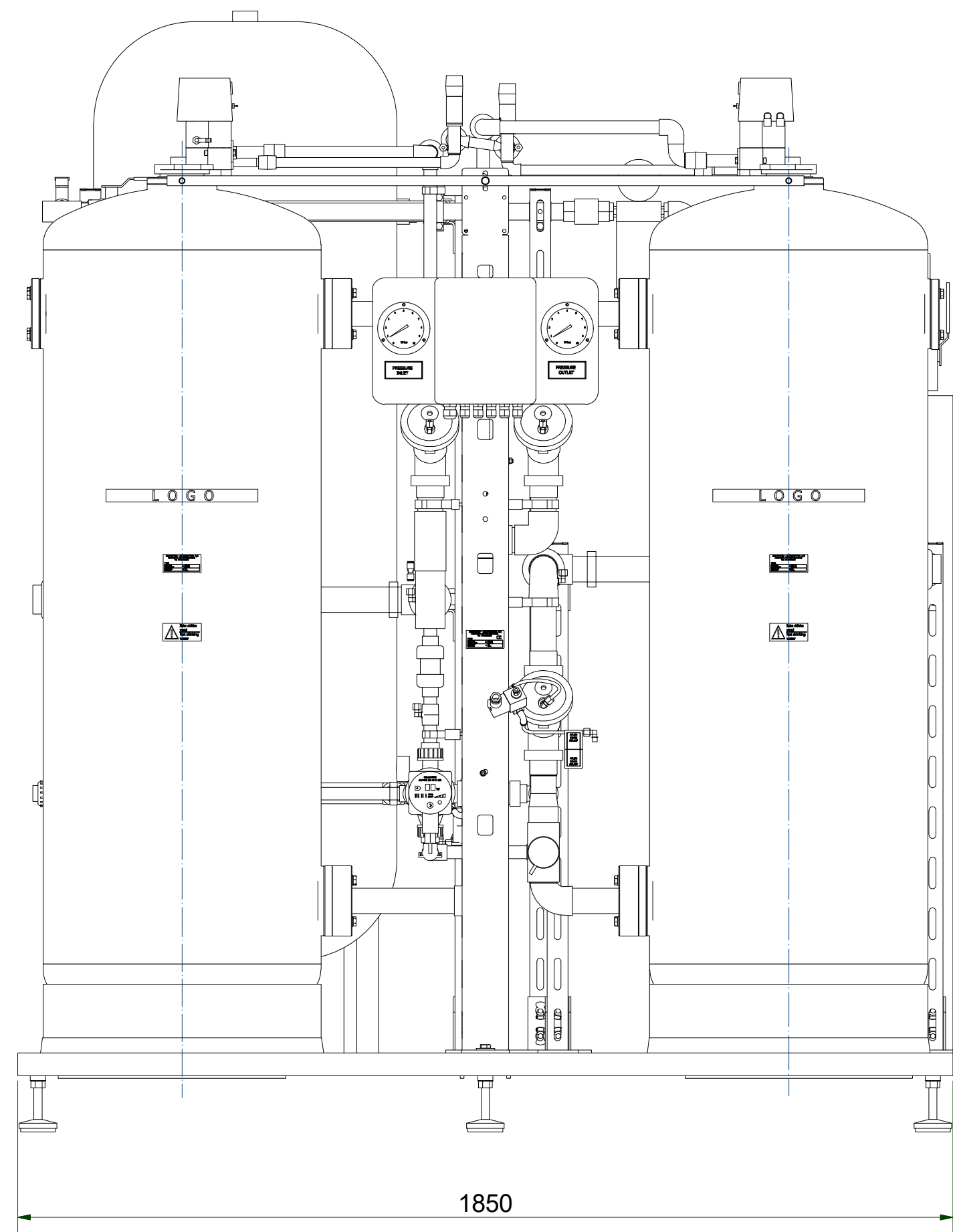


EUROWATER

SILHORKO-EUROWATER A/S
 DK-8660 SKANDERBORG
 PHONE ☎45 87938300

ORDRENR.: ON125801	KONTROLLERET AF:	GODKENDT AF:	SIGN.	
X-REF.: X41530	DATO:	DATO:	UDH	
EW-SWEDEN EES PROJECT			DATO 20-12-2016	
P&I-DIAGRAM WTP-F DMHE902 N2 GENERATOR			MÅL 1:1	
REV. MRK.	RETTELSE	DATO SIGN.	TEGN. NR.: 125801-3	REV. 0

Denne tegning tilhører SILHORKO-EUROWATER A/S og må ikke anvendes eller kopieres uden SILHORKO-EUROWATER A/S tilladelse.

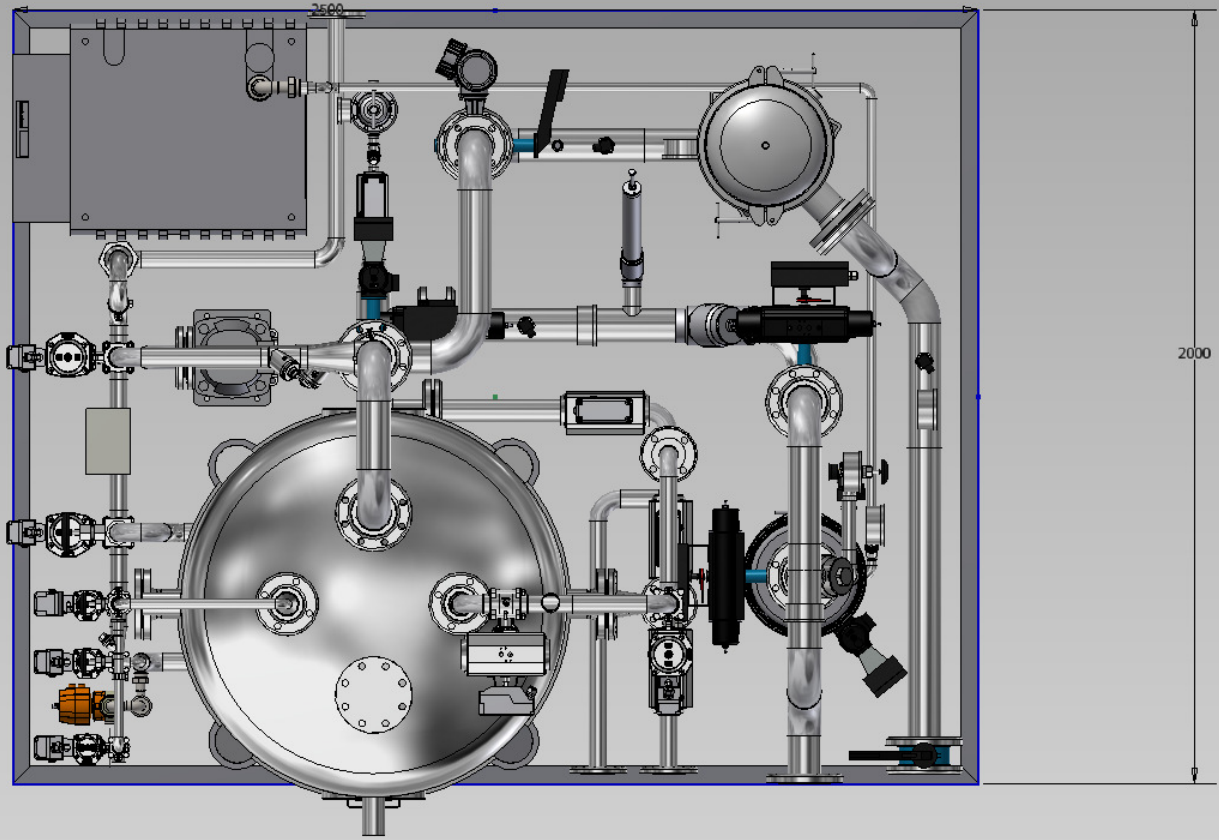


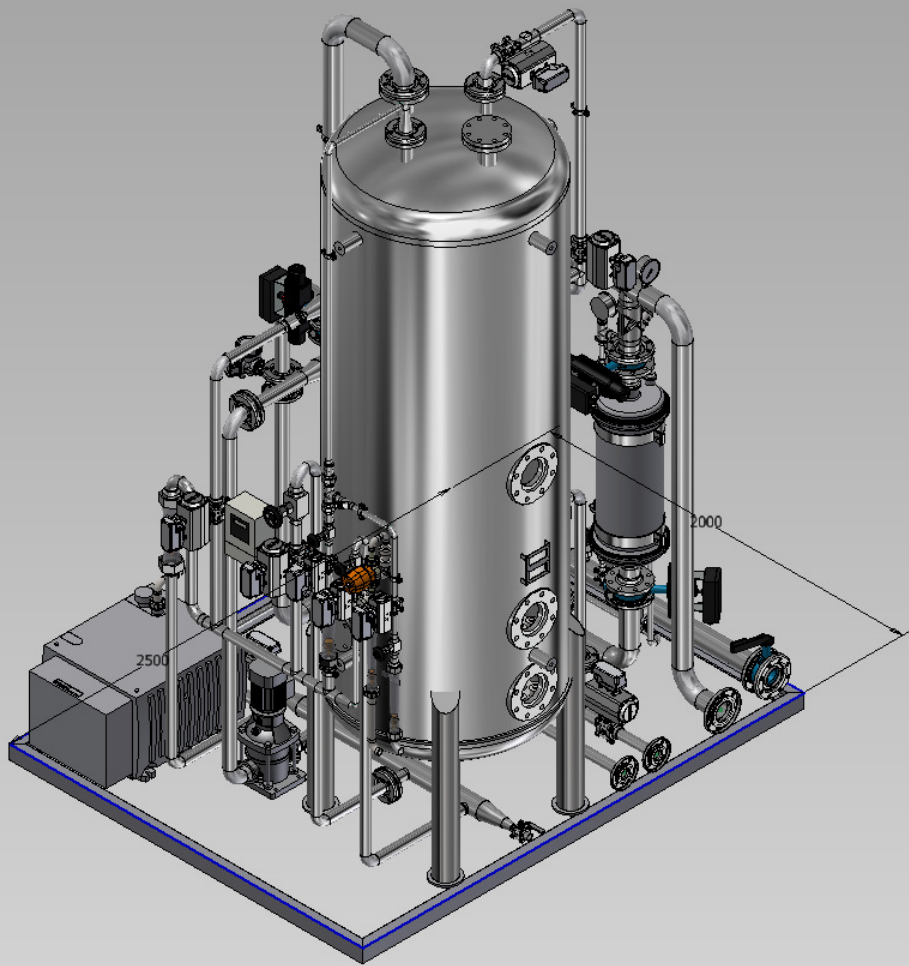
32	3	ELBOW 90 DEG 1" AISI316	1"	Stainless Steel	031590-008
31	1	ELBOW 90 DEG 1" AISI316 O/I	1/2" N/M	Stainless Steel	031592-004
30	1	ELBOW 90 DEG 1" AISI316 O/I	1"	Stainless Steel	031592-008
29	2	TEE EQUAL 1" AISI316	1 1/2" x 1 1/2"	Stainless Steel	031636-008
28	1	REDUC. BUSH 1/2"-3/8" AISI316	1/2"-3/8"	Stainless Steel	031741-026
27	2	REDUC. BUSH 1"-3/8" ANSI316	1"-3/8" O-I	Stainless Steel	031741-041
26	2	REDUC. BUSH 1"-1/2" ANSI316	1"-1/2" O-I	Stainless Steel	031741-042
25	1	SOCKET	1"	Stainless Steel	031770-008
24	2	HEXAGON NIPPLE	3/8"	Stainless Steel	031780-003
23	2	HEXAGON NIPPLE	1/2"	Stainless Steel	031780-004
22	5	HEXAGON NIPPLE 1" ANSI316		Stainless Steel	031780-008
21	2	PIPE AISI 316	1" x 150mm	Stainless Steel	032015-008
20	2	PIPE CLAMP	25mm	PP-H	061900-025
19	4	PIPE CLAMP	50mm	PP-H	061900-050
18	1	MANOMETER 0-10BAR	3/8" BSP		307659-003
17	5	BALL VALVE	1"	Stainless Steel	308600-008
16	9	FOOT TYPE A HJ-3A 1200KG	M16	Stainless Steel	327101-002
15	3	HILTI Pipe Ring		Stainless Steel	329001-037
14	9	HILTI NUT MQA-M10-F		Galvanized Steel	329010-010
13	26	HILTI MOUNTING BOLT MQN-F		Galvanized Steel	329010-110
12	5	HILTI PLUG MQZ-E41		PP-H	329014-001
11	4	HILTI RAIL MQ-41	700 mm	Galvanized Steel	329015-001
10	3	HILTI RAIL MQ-41	1700 mm	Galvanized Steel	329015-001
9	2	HILTI RAIL MQ-41	1000 mm	Galvanized Steel	329015-001
8	2	HILTI BRACKET MQW-4 GALV.		Galvanized Steel	329020-003
7	5	HILTI RAIL MOUNTING BRACKET	MQP-21/72-F	Galvanized Steel	329021-001
6	1	CARBON FCA 13 1/2"		X40425	
5	1	DUST FILTER FPRO 10 3/8"		X40425	
4	1	NITROGEN GENERATOR		Steel	X40425
3	1	NITROGEN TANK 500L		Steel	X40425
2	1	DMHE 902 PVC SILF TERMINALBOX		X42086	
1	1	FOUNDATION		X42088	
POS	PCS	DESCRIPTION	DIMENSION - LENGTH	MATERIAL	PART NO.

EUROWATER

SILHORKO-EUROWATER A/S
DK-8660 SKANDERBORG
PHONE + 45 87938300

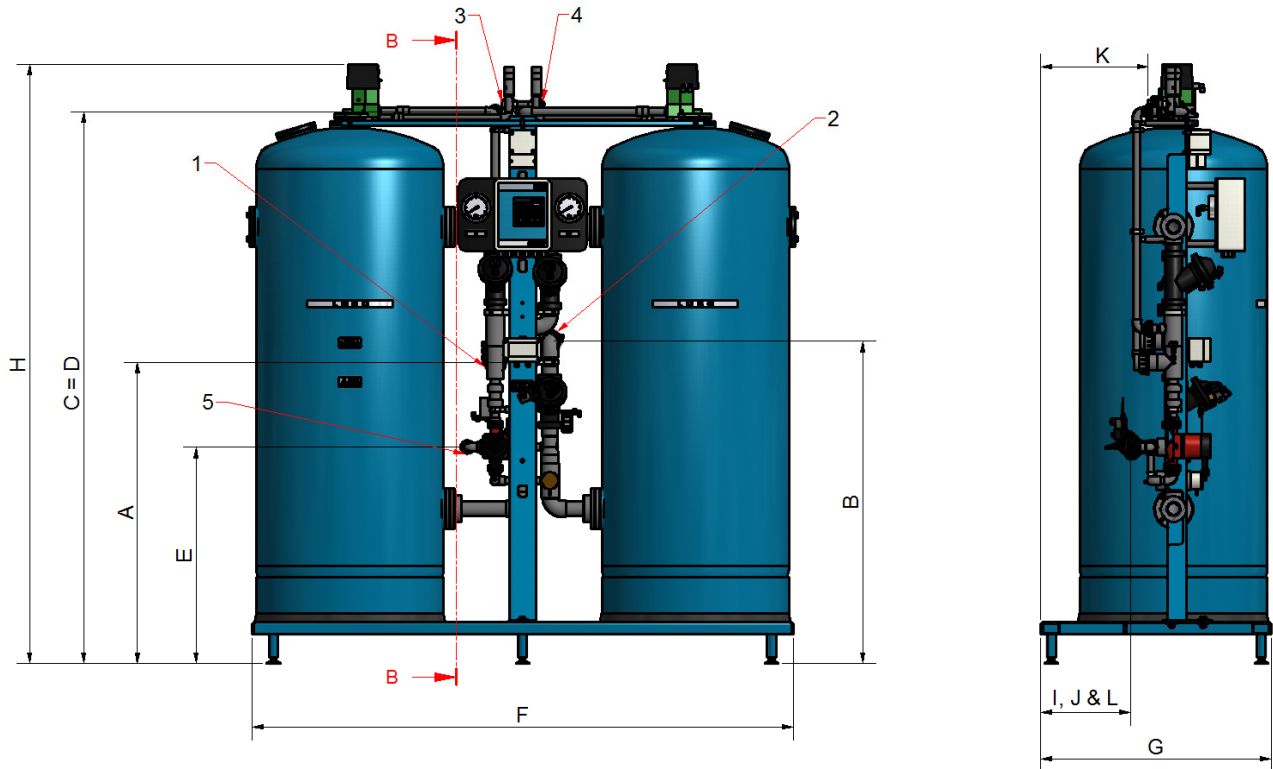
ORDER NO.:	ON125801	INSPECTION BY:	ALC	APPROVED BY:	
X-REF.:	X41530	DATE:		DATE:	
Skanska ESS Construction AB LUND				DRAWN BY:	ALC
WTP: DMHE902 N2 GENERATOR				DATE:	16-01-2017
				SCALE:	1 : 10
				DRAWING NO.:	125801-6
				REV.:	0
REV.	DESCRIPTION	DATE	SIGN.	DRAWING NO.	REV.





Demineralisation plant type DMHE-F (cation filling = anion filling)

Water temperature max. 35 °C • Operating pressure: 2.5-6 bar • Supply voltage: 230 V, 50 Hz, transformed into 24 VDC
 • Cation regeneration chemical: 30 % hydrochloric acid • Anion regeneration chemical: 27-30 % sodium hydroxide lye



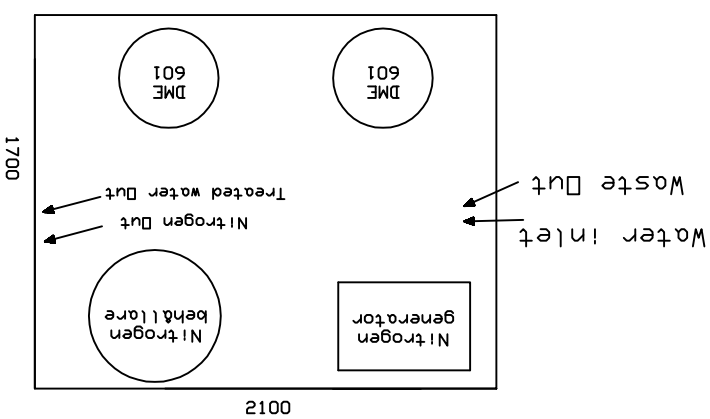
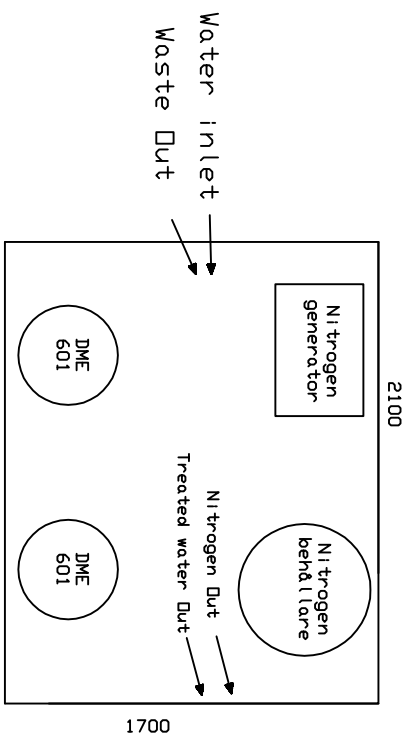
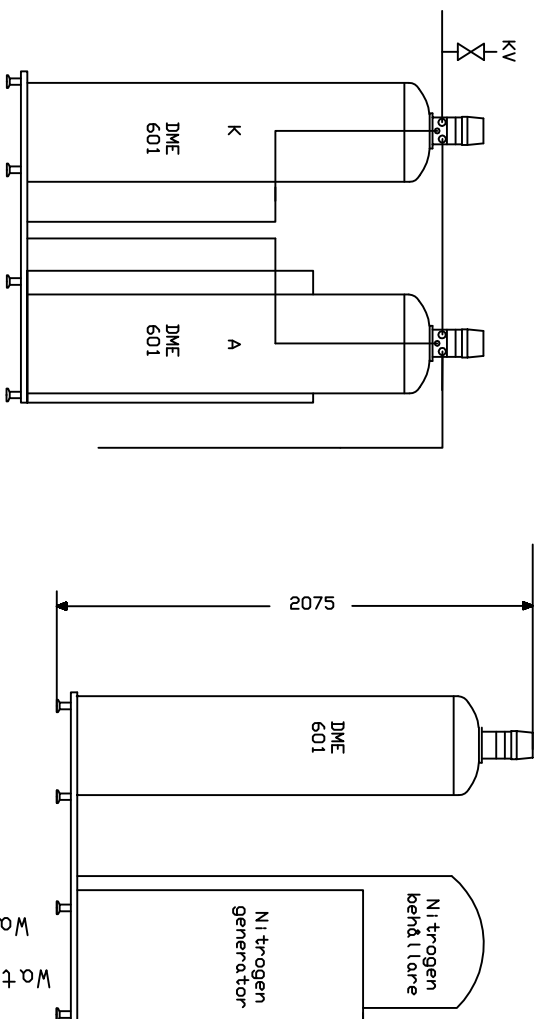
		DMHE 601/601	DMHE 901/901	DMHE 1201/1201	DMHE 1801/1801	DMHE 2001/2001
Flow rate, max. *	m ³ /h	10	14	20	22	20
Pressure loss at 10 °C *	bar	3.3	2.8	3.7	4.0	3.7
Drain capacity from plant to neutralizer	m ³ /h	2.0	4.0	4.0	4.0	4.0
Transport weight	app. kg	420	500	590	790	1000
Weight, with filling and water	app. kg	960	1400	1850	2700	3500
A Position of water inlet	mm	985	1040	1040	1070	1070
B Position of water outlet	mm	1120	1120	1120	1100	1100
C Position of cation drain **	mm	1940	1940	1940	1940	2440
D Position of anion drain **	mm	1940	1940	1940	1940	2440
E Position of quality rinse drain **	mm	660	660	750	780	780
F Width of plant frame	mm	1480	1880	1880	2180	2180
G Depth of plant frame	mm	600	800	800	950	950
H Height ***	mm	2075	2075	2075	2075	2575
I Position of water outlet	mm	250	350	350	425	425
J Position of water inlet	mm	250	350	350	425	425
K Position of cation & anion drain	mm	250	350	350	425	425
L Position of quality water outlet	mm	300	400	400	475	475
1 Water inlet connection	DN/mm	40/50	40/50	40/50	40/50	40/50
2 Water outlet connection	DN/mm	40/50	40/50	40/50	40/50	40/50
3 Cation drain connection	DN/mm	20/25	20/25	20/25	20/25	20/25
4 Anion drain connection	DN/mm	20/25	20/25	20/25	20/25	20/25
5 Quality drain connection	DN/mm	20/25	20/25	20/25	20/25	20/25

* Pressure loss is limited to max. 4 bar or column water flow to max. 60 m/h.

** Connected to a neutralizer system.

*** Free space above the plant: min. 300 mm.

Subject to changes in design



EUROWATER

A GROUP OF CO-OPERATING EUROPEAN WATER TREATMENT SPECIALISTS

CUSTOMER

ESS

TECHNICAL DESCRIPTION

Clean water /N2 skid

EUROWATER AB
KROKBYGGEN 16
SE-281 49
TEL. 0479-421 43 FAX 0479-421 46

DRAWN BY:
ROGER HYLANDER

DATE:
12-10-2016

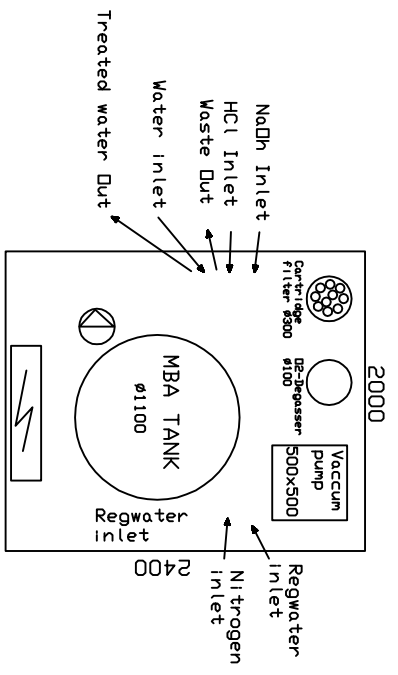
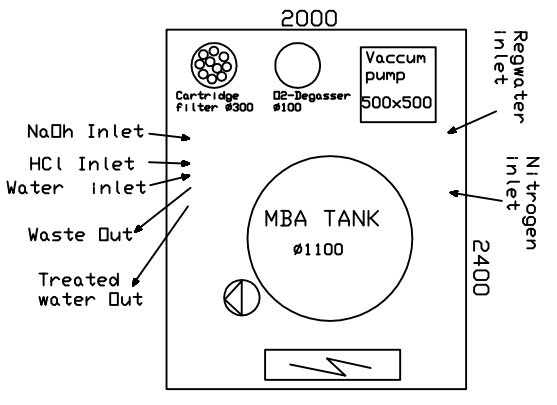
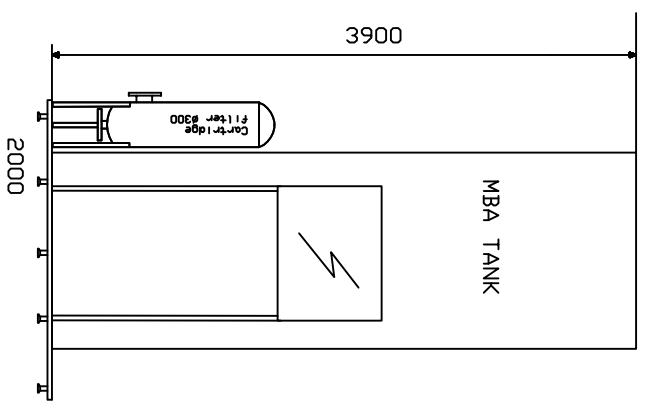
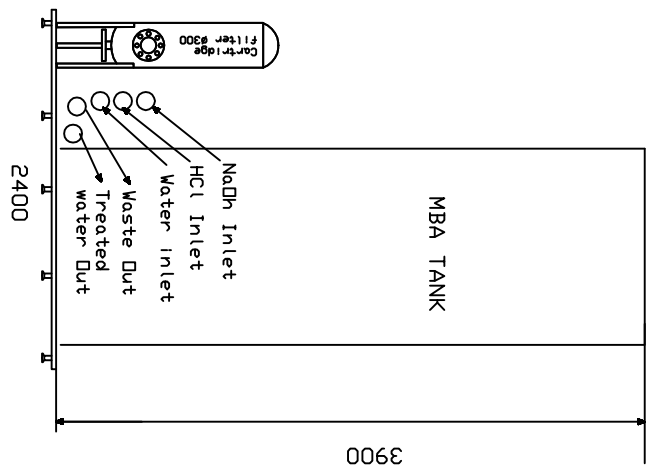
SCALE:

REV. NO.

DESCRIPTION

DATE

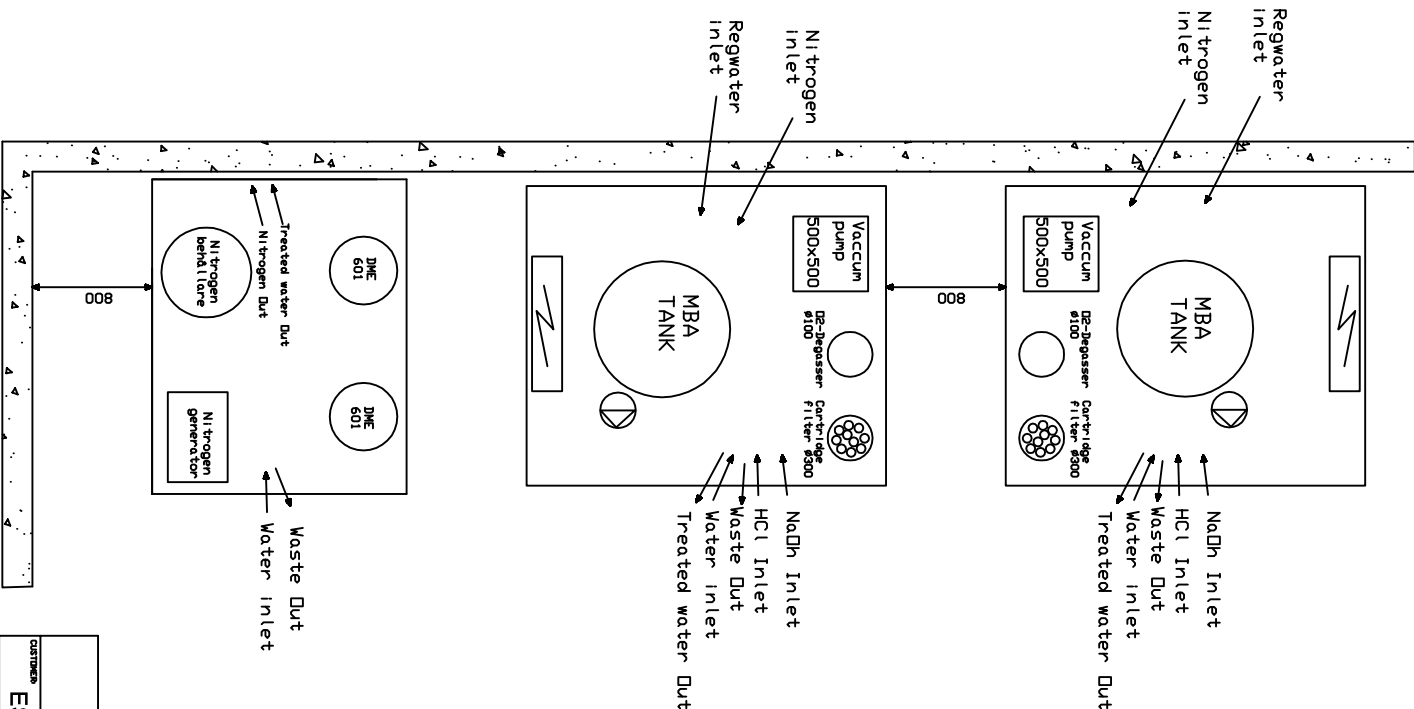
DRAWING NO. **V3**



EUROWATER
A GROUP OF CO-OPERATING EUROPEAN WATER TREATMENT SPECIALISTS

ESS
TECHNICAL DESCRIPTION
MB-skid CWH and CWM

CUSTOMER: ESS
ADDRESS: RÖRER HILLANDER
TELEPHONE: TEL. 0479-421 43 FAX 0479-421 46
SCALE: 1:2-10-2016
DATE: 12-10-2016
DRAWING NO.: 13



EUROWATER A GROUP OF CO-OPERATING EUROPEAN WATER TREATMENT SPECIALISTS		CUSTOMER	
		ESS	
TECHNICAL DESCRIPTION		OVERSIKT	
NO. 1	DESCRIPTION	DATE	DRAWING NO.
			V3
EUROWATER AB RÖGER HILLANDER TEL. 0477-421 43 FAX 0477-421 46 2012-10-2016		SCALE 1:1	

Tilbud på nitrogenanlæg

Tekniske data

Nitrogengenerator Isolcell Nimos PSA M2 LP G2014 med zirconium sensor

Komplet med automatik for produktion af nitrogen.

Heriblandt sikkerhedsventiler på beholdere og filtre, O₂-analysator for aflæsning af oxygen indhold (renhedsindikator) som stopper anlægget hvis renheden overskrides.

O₂ analysatoren kan indstilles til kontinuerlig overvågning eller kun ved produktion.

Driftssignaler fra styringen kan tages ud til central overvågning.

Indbygget 25 liter skylletank for opretholdelse af renhedsgrad samt bedre virkningsgrad og højere afgangstryk.

Nitrogenydelse:	2,4 m ³ /time ved 99,99% renhed og 6 bar – indgangstryk 6,5 bar 2,8 m ³ /time ved 99,99% renhed og 6 bar – indgangstryk 9,5 bar
Max. tryk nitrogen:	8,5 bar ved 9,5 bar trykluft tilgang
Tryklufforbrug:	13,8 m ³ /time ved 7,5 bar ved 99,9% 16,9 m ³ /time ved 9,5 bar ved 99,9%
O ₂ -sensor:	Zirconium 0-1000 ppm
El-forbrug:	500 watt
El-tilslutning:	230 volt 50 Hz + jord
Dimensioner mm:	L 600 x B 400 x H 1300
Vægt:	210 kg



Støvfilter Mark FPRO 10

Partikler: < 1 mg/m³

Nitrogenbeholder 500 liter lodret 11,0 bar

Inkl. sikkerhedsventil og manometer

Dimensioner mm: H 1850 mm x Ø 600 mm

Vægt: 185 kg



Tilbud på nitrogenanlæg

Generel principtegning over nitrogenanlæggets opbygning.

