

Installation Organization & Way of Working

Installation and Field support

Division consists of three parts

Installation Coordination

- Ownership of test and installation schedule (near term)

Design and Installation Support

- Spatial Integration
- Survey, alignment and metrology
- Technical workshop
- Rigging

Infra Project (Accsys – G Buildings)

- Mechanical and Process installations
- Electrical Installations

Installation Organization

Role and Responsibilities

- Own and control installation areas on site (BASU/AREAC)
- Own the installation process
- Own the installation schedule
- Schedules and coordinate installations
- Enforces rules and regulations
- Gatekeeper for start of installations (IRR go/nogo)
- Prioritize installation (field calls)
- Advise on installation method
- Advise on installation resources

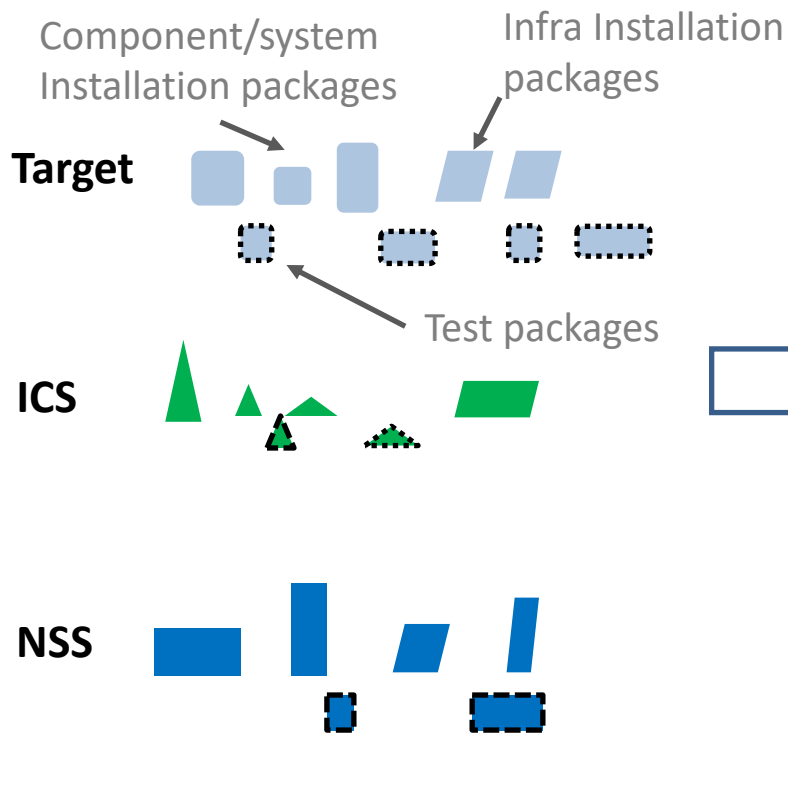
- Facilitate construction site on-boarding
- Facilitate setup and use framework services (sub-contractors)
- Manage the framework contracts (together with procurement)
- Provide installation services (own some, front all)
- Coordinate all activities toward **SEC**

- Deliver defined infrastructure for Accsys

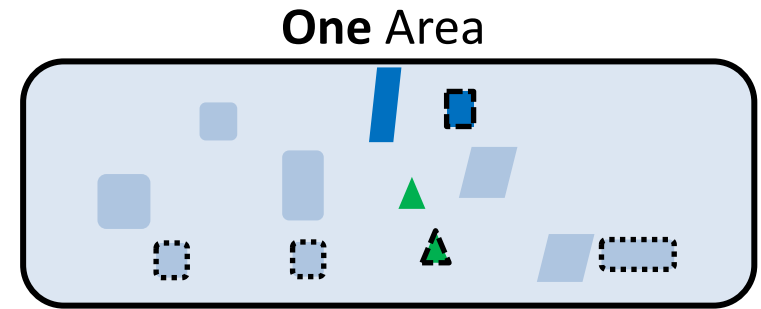
1 Area = 1 Coordinator = 1 Schedule

But many different packages

Sub-Projects



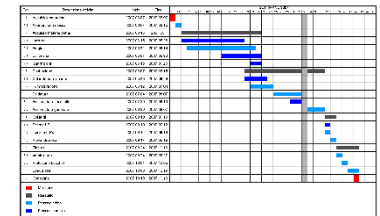
Installation



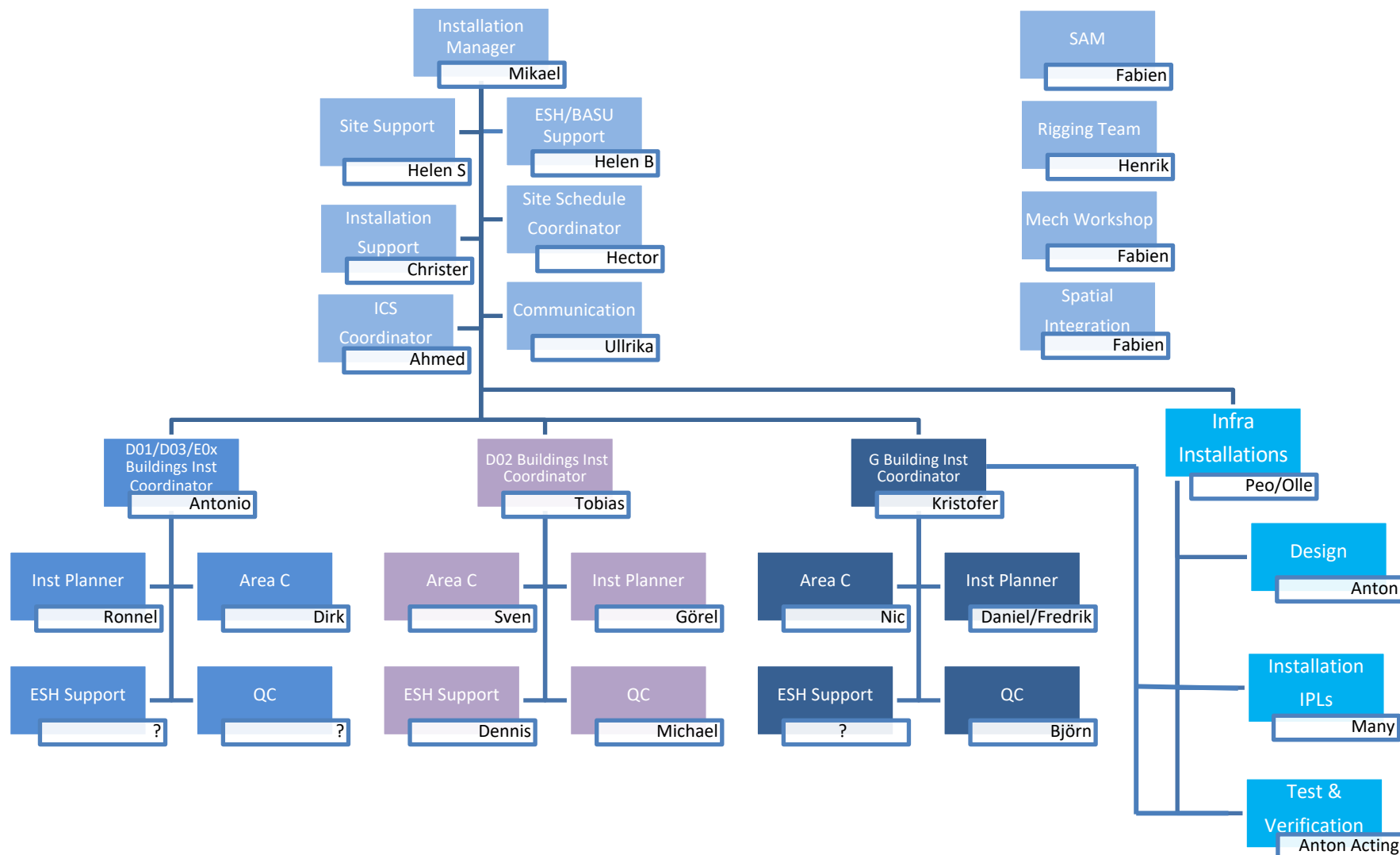
One Coordinator



One Schedule



Installation Functional Organization



Installations Ongoing



Target building D02 (parallel access)

- Active cell/Race - ongoing
- AT2 Beam dump – ongoing
- HVAC – Starting up

Long hall E01, E02.1 (full access)

- Guide shielding – ongoing
- NMX cave – ongoing

Labs E03, E04 (full access)

- Lab outfitting – ongoing

Tunnel G01 (full access)

- NCL installations – ongoing
- RF DS - ongoing
- CDS – ongoing
- ...

Gallery G02 (full access)

- RF work – ongoing
- Cable pulling – ongoing
- Pipes/Cooling – ongoing
-

Cryo building G04 (full access)

- In commissioning

Central Utility H01 (Early access)

- Central server room – ongoing
- EON chiller work - ongoing