



# The League of advanced European Neutron Sources

Prof. Robert McGreevy, LENS Chair

2<sup>nd</sup> February 2022

# Neutrons in Europe: a long tradition of cooperation

- 1987 EU FP2 Large Installation Programme; DR3 reactor Denmark
- 1990 EU FP3 5 neutron facilities supported; Neutron Round Table
- 1994 EU FP4/5 Neutrons and muons; Access and Technical Development programmes; Round Table
- 2002 EU FP6 NMI3 12 Access Activities; 8 Joint Research Activities; 4 Networking Activities
- 2014 EU FP8 SINE2020
- 2019 LENS



Neutron Round Table 1994

# Neutrons in Europe: a long tradition of cooperation

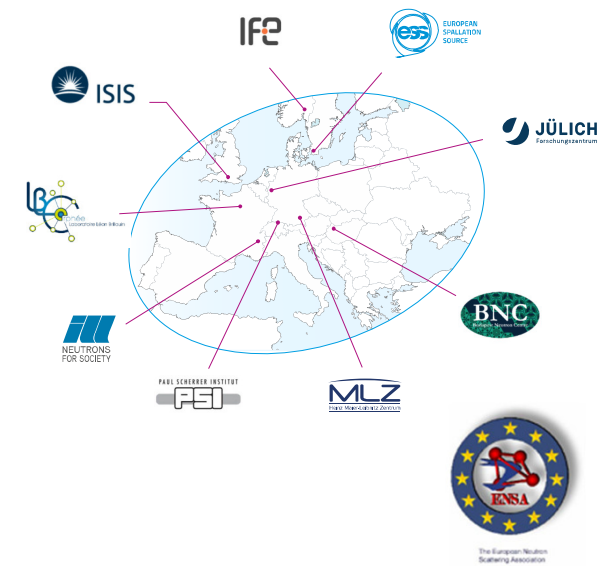


Second ESS meeting 1992

# LENS: a strategic alliance

- For several decades Europe has been the global leader in the field of neutron science
- This is the fruit of a functioning eco-system:
  - a strong network of facilities coupled with
  - a vibrant user community through
  - a service oriented business model

Strong cooperation within the network of European facilities is key to maintaining this eco-system.



# Members of LENS

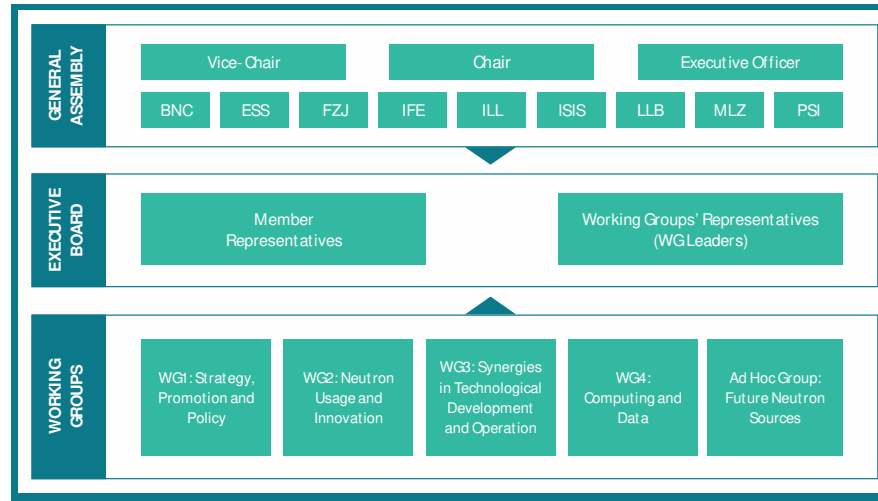
- Budapest Neutron Centre, Hungary
- European Spallation Source, Sweden
- Forschungszentrum Jülich, Germany
- Heinz Maier-Leibnitz Zentrum, Germany
- Institut Laue-Langevin, France
- Institute for Energy Technology, Norway
- ISIS Neutron & Muon Source, United Kingdom
- Laboratoire Léon Brillouin, France
- Paul Scherrer Institute, Switzerland



# LENS Objectives

- Facilitate discussion, decision making processes and collaborative efforts via enhanced collaboration between facilities
- Jointly optimize the use of resources, improve and adapt services in the interest of the overall scientific output
- Broaden the user base in academia and industry
- Provide a joint platform for representation and impact promotion
- Co-operate closely with the user community (ENSA)





**WG1 Strategy, promotion, policy**

A. Schreyer/ESS, T. Brückel/FZJ

**WG2 Neutron usage and Innovation**

J. Neuhaus/MLZ, P. King/ISIS

**WG3 Synergies in technological development and operation**

M. Janoschek/PSI, M. Böhm/ILL

**WG4 Computing/Data**

P. Mutti/ILL, S. Förster/MLZ

# LENS is a member of ARIE

(Analytical Research Infrastructures in Europe)

- ARIE is a consortium of 7 RI consortia
  - RADIATE (ion beams)
  - Laserlab (lasers)
  - Inspire (proton beam therapy)
  - EMFL (high magnetic fields)
  - e-DREAM (electron microscopes)
  - LEAPS (photon sources)
  - LENS (neutron sources)
- Current chair is Joachim Wosnitza (EMFL)

