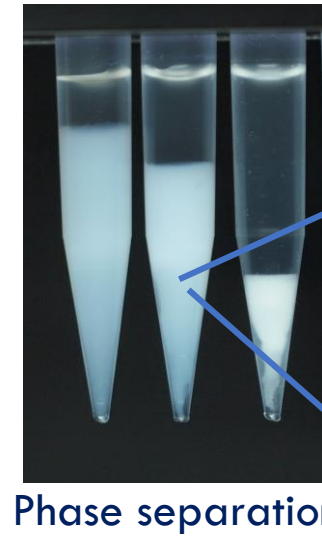
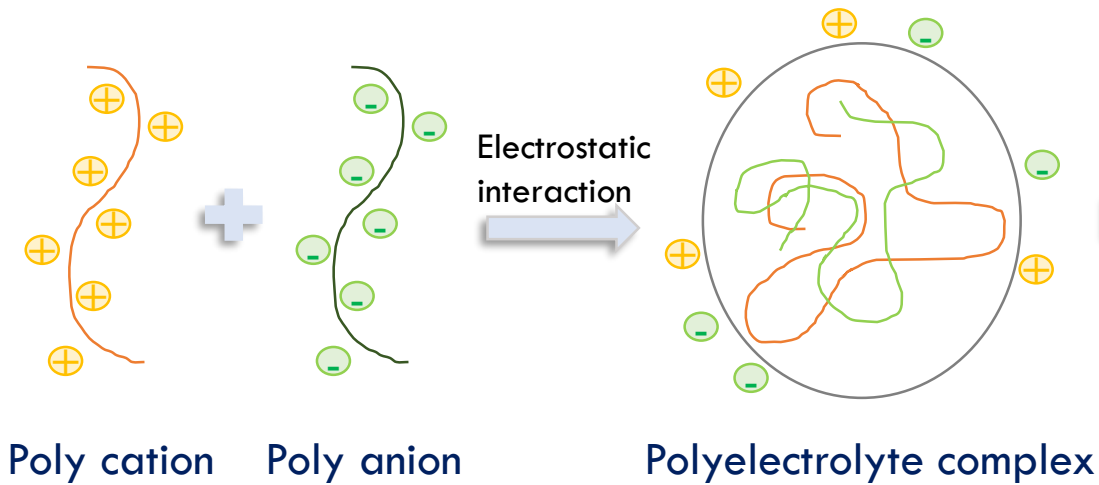
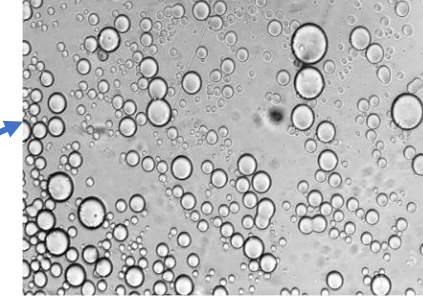


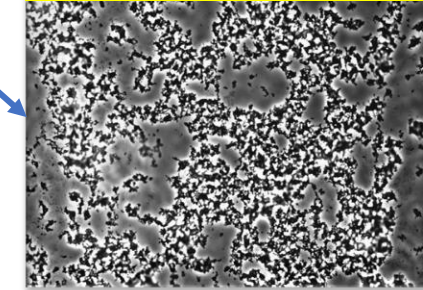
Competition between aggregation and coacervation in (bio)polymer systems



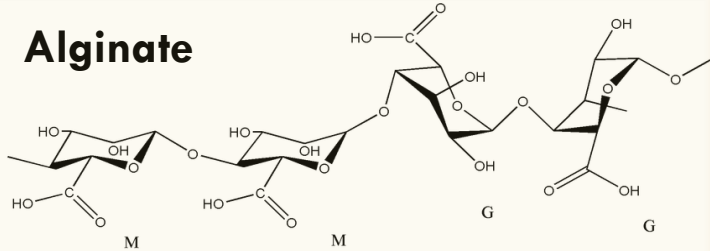
Liquid-Liquid Phase Separation



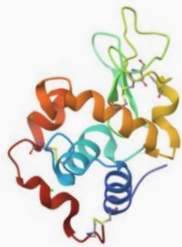
Liquid-Solid Phase Separation



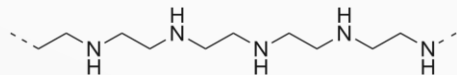
Alginate



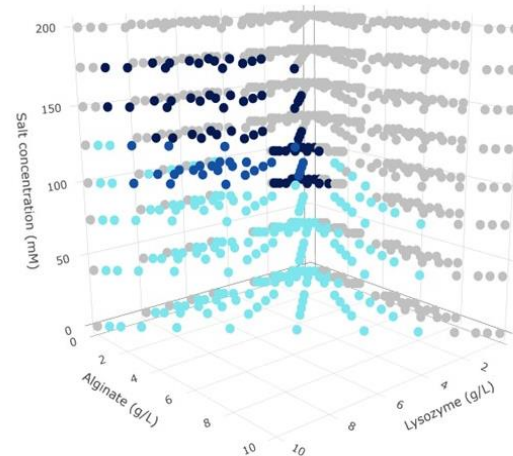
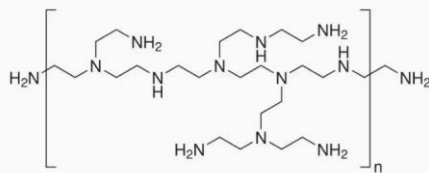
Lysozyme



Linear PEI



Branched PEI



- Monophasic
- LSPS
- Coexistence of both LLPS and LSPS
- LLPS

Phase behaviour analysis

Small angle x-ray scattering (SAXS)

Structural characterization of different assemblies

- ✓ Characteristic size of the complex
- ✓ Inner composition of the complex