



**EUROPEAN
SPALLATION
SOURCE**



System Acceptance Review (SAR) Meeting for ESTIA

Experiment Control & Data Collection
=ESS.NSS.H01.ESTIA.K02

PRESENTED BY RENEE HELFERT ON BEHALF OF THE ECDC TEAM

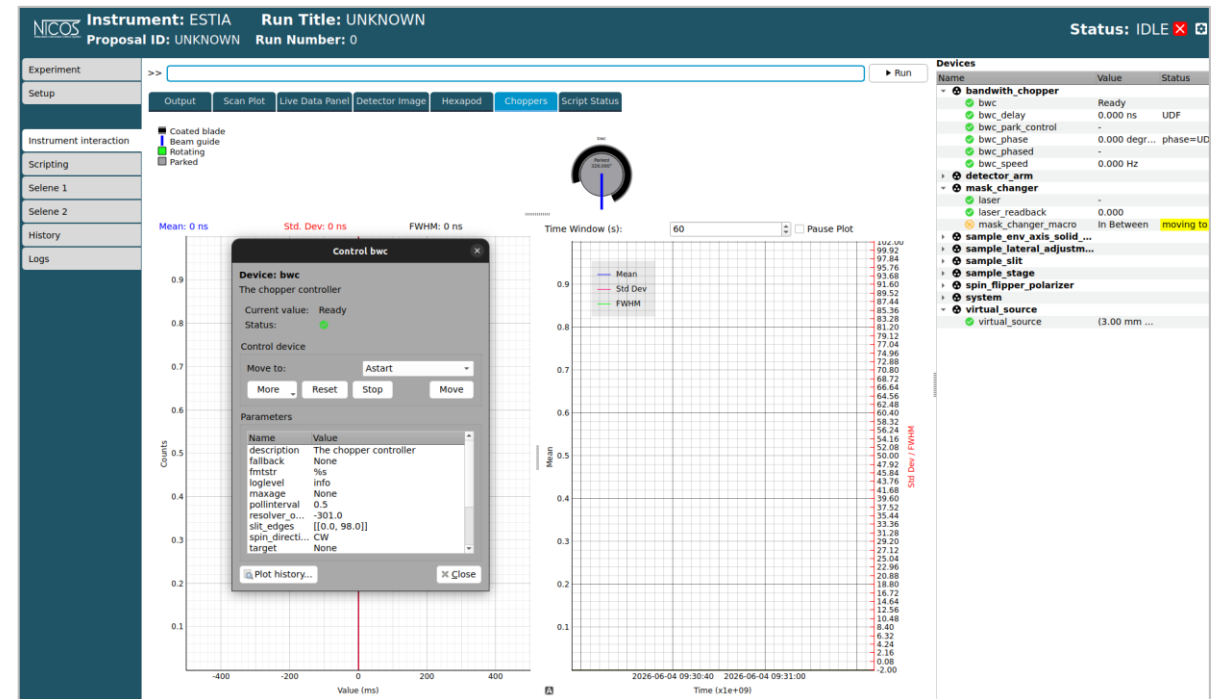
2026-06-10



Status Report

Principle Responsibilities - Overview

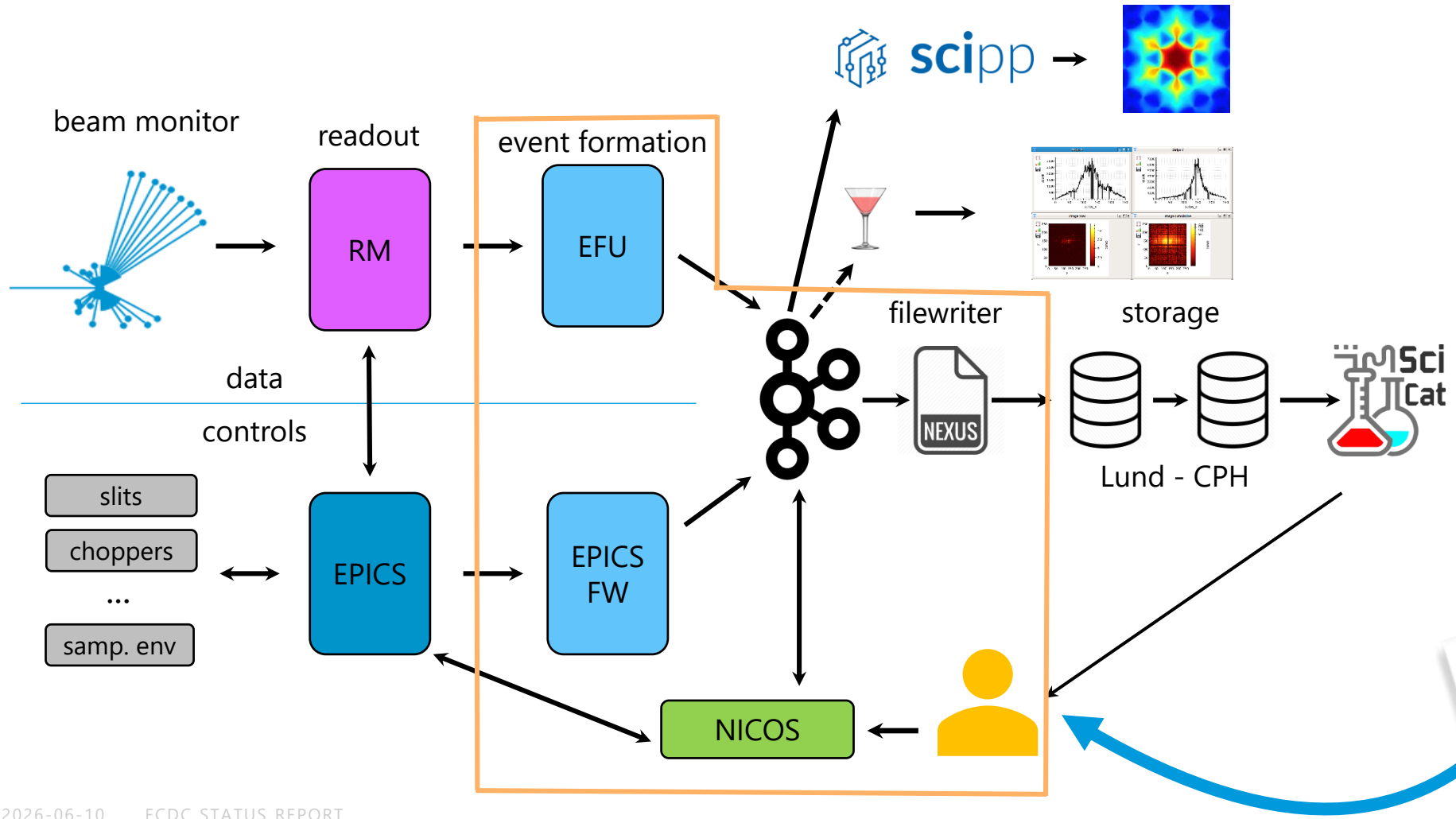
- Device Integration into the NICOS user environment
- Support Instrument Staff during integration testing
- Data Collection via NeXus



Chopper information panel for ESTIA

System Definition

Complete ECDC Delivery Package



Status Report

Outstanding Tasks



System	Jira Ticket	Notes	Status	Resolve By
Beam Monitor ESS-6044519	Integration of BM HVPS NIT-815	Required to be seen in NICOS for monitoring, but the integration from ICS is incomplete. Will be implemented when ready.	To-Do	TG6
	BM integrated counts NIT-816	Already implemented with Livedata, but added support was added by improving Just-Bin-It to consume the da00 data type.	Closed	TG6
Beam Geometry & Conditioning ESS-5996534	VS - Multi-Device Soft Limits NIT-819	Limits can be set for the Virtual Source but must be done per-motor. This feature would allow all limits to be set in one place. Does not affect the ability to set limits.	To-Do	TG6
In-Cave Components ESS-6014377	Hexapod Controls NIT-813	The hexapod currently has basic controls and some status monitoring implemented in NICOS. However, there are multiple features that would improve the user experience (such as coordinate space, offsets, soft limiting), so development is ongoing.	Ongoing Development	TG6
	Air Pads – Detector Arm NIT-814	Awaiting updates from MCA to be able to integrate controls into NICOS (including status). Will be implemented when ready.	To-Do	TG6
Selene Guides ESS-6044517	Interferometer Integration into NICOS NIT-817	Firmware update has been a blocker for development until week 22. There is still some work to do before it can be tested with NICOS.	To-Do	TG6
Other Tasks	Multi-Axes Mapping NIT-812	Feature Request. Single-axis mapping exists but having the ability to map multiple axes will improve the user experience when changing modes.	To-Do	TG6
	Setting Motor Offsets NIT-820	Handling issue between NICOS and EPICS. Setting an offset twice causes a small difference between checked limits. Motor is prevented from moving as a result. Can be resolved in EPICS, but a full fix is being developed.	In Progress	TG6



Status Report

Current Status

Performance with respect to tests	Pass
Main Issues (NCR/NIT)	Interferometer Integration into NICOS - NIT-817 Setting Motor Offsets - NIT-820
What are the treatments?	Be prepared for Interferometer testing – NICOS integration completed Fix offset handling between NICOS and EPICS – In Progress
When will they be fixed?	Before TG6
Is the software ready for hot commissioning?	Yes, ready for all developments and future improvement



Status Report

Hot Commissioning

Support activities in the Instrument Hot Commissioning plan

- **ESTIA System Verification and Validation - [ESS-0318499](#)**

Operating & Maintenance manuals

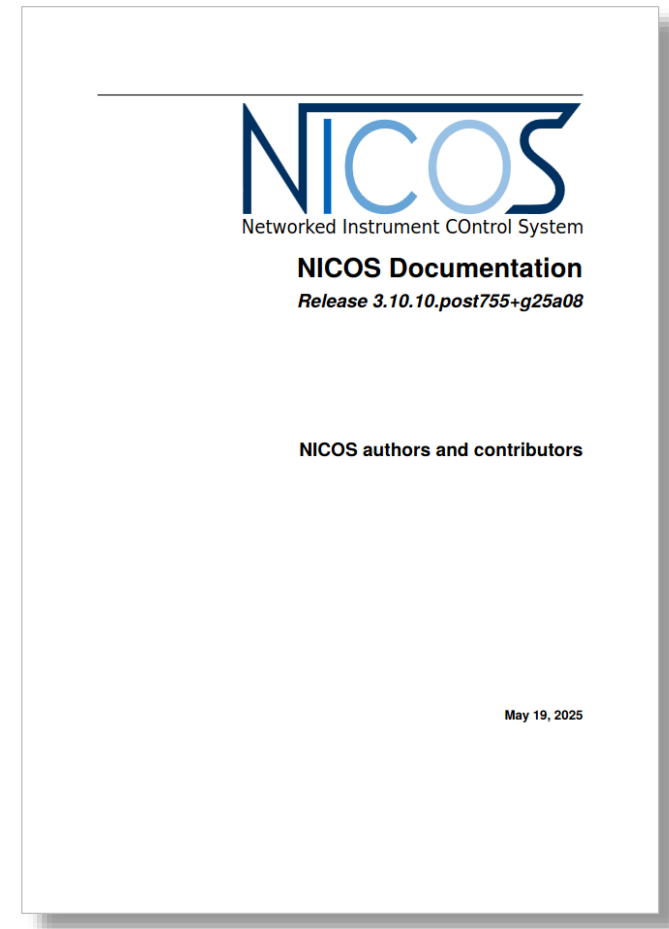
- **NICOS Operation Manual - [ESS-5706535](#)**
- ***ECDC Architecture - [ESS-6076137](#)**
- **ICD for ESS Beam Monitors - [ESS-5472997](#)**
- ***ECDC Coordinate System - [ESS-5937831](#)**
- ****System Maintenance Manual for ECDC Software - [ESS-5936764](#)**

Challenges

- **To discover and support new user features**

Out of hours support

- **As needed**





Thank You