



EUROPEAN
SPALLATION
SOURCE

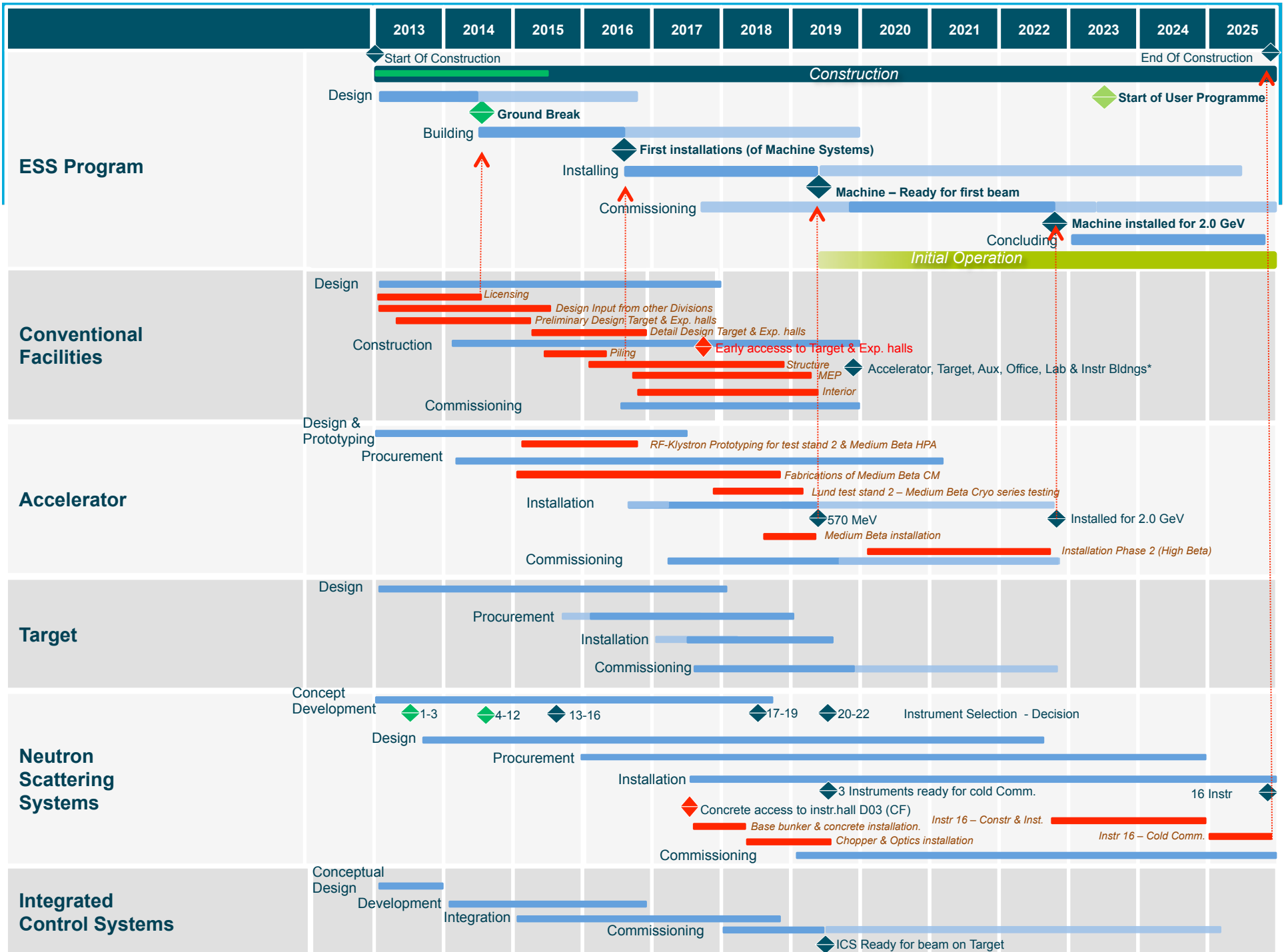
European Spallation Source ERIC

- Status -

Roland Garoby
ESS Technical Director

17 December 2015

www.europeanspallationsource.se

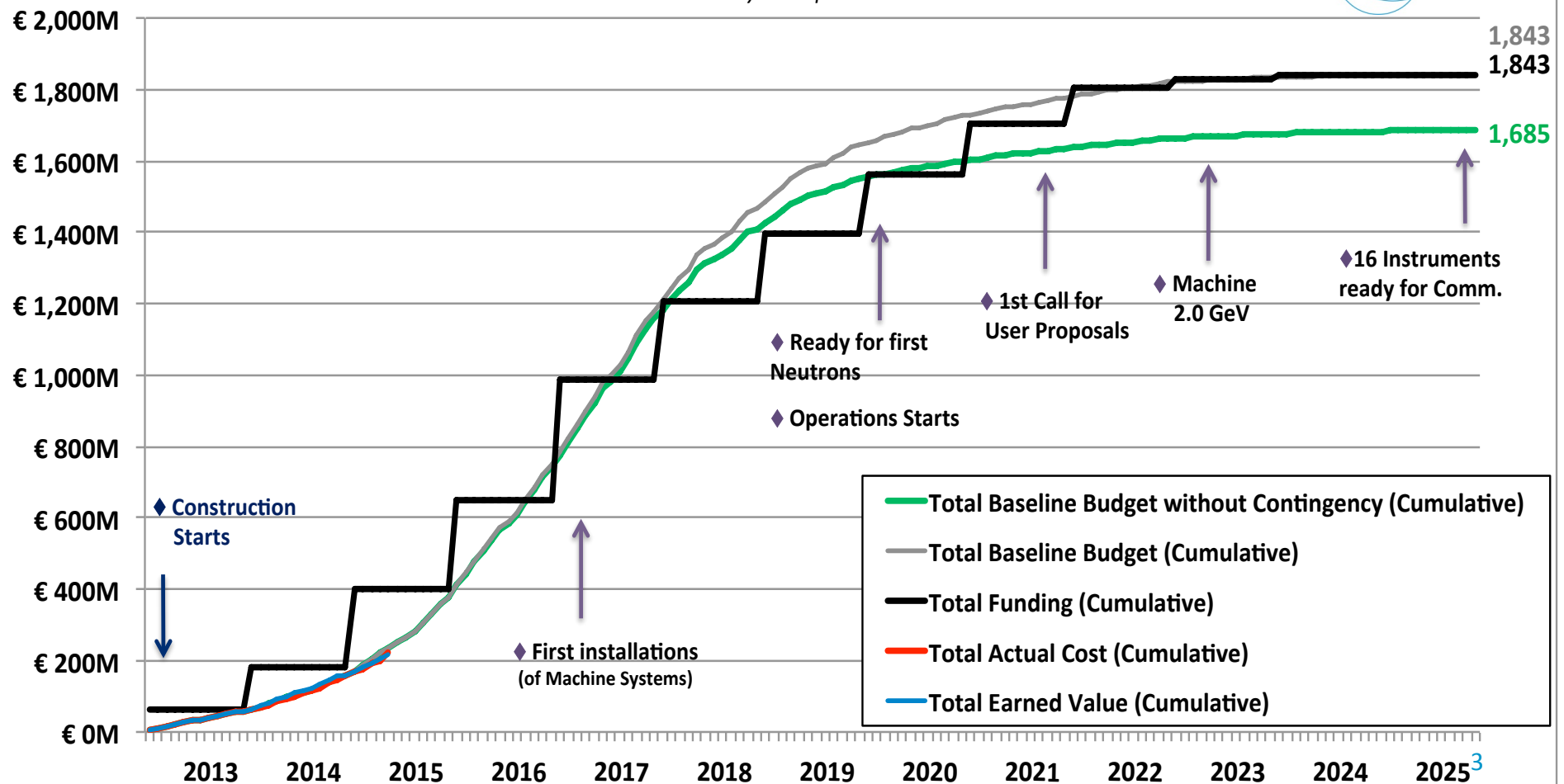


Financial plan

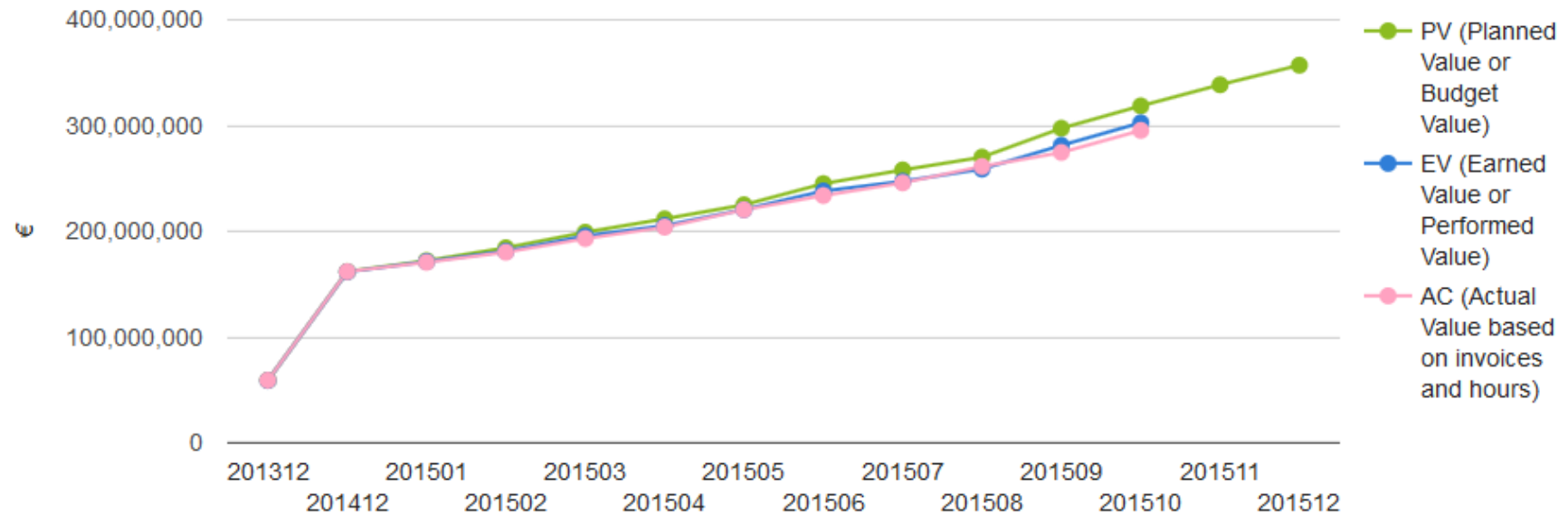


ESS Construction Funding & Budget Profile

January 2013 prices



Earned Value Status (end October 2015)



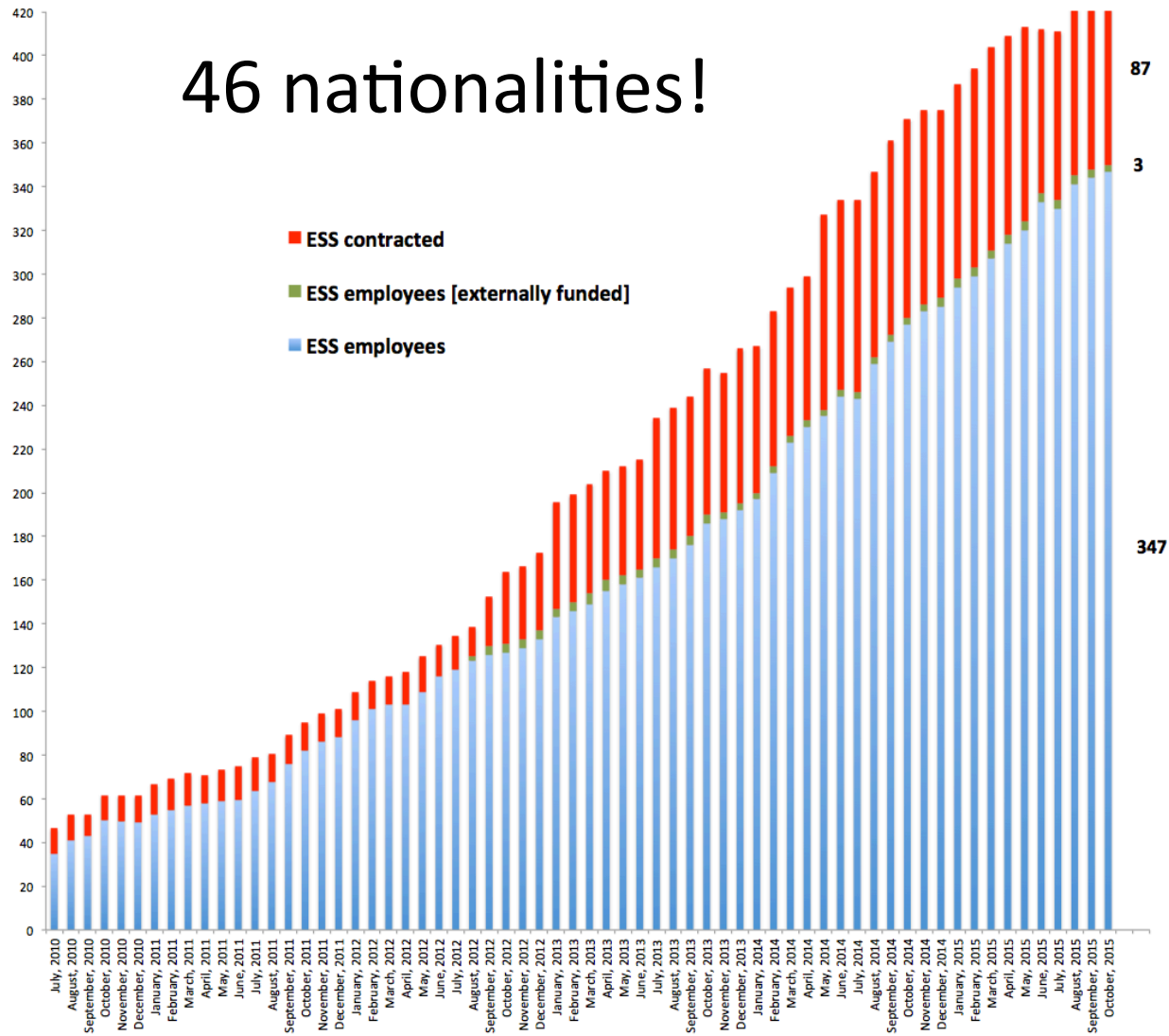
Scheduled: 318.5 MEURO

Earned: 302.5 MEURO

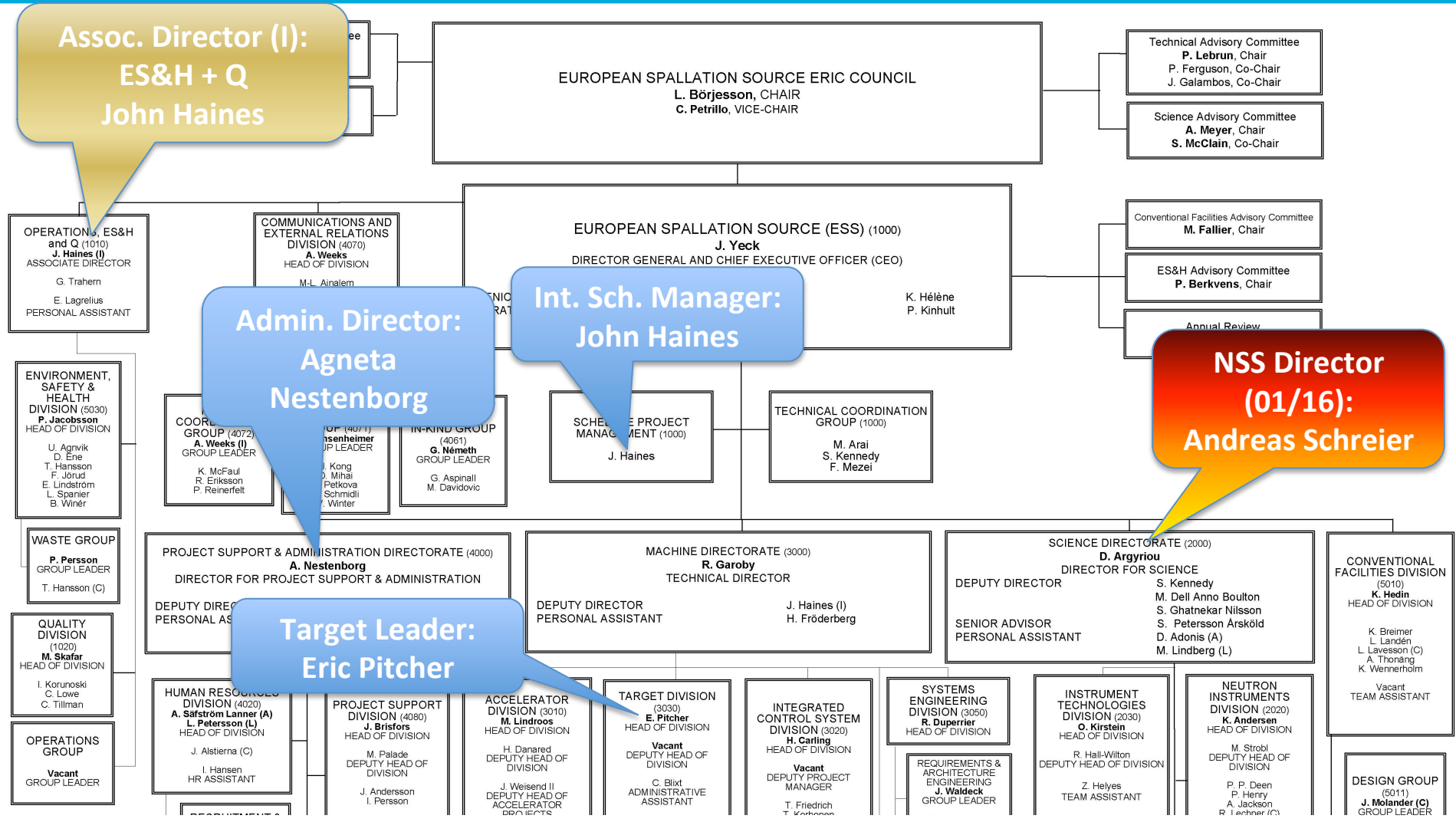
Actuals: 295.3 MEURO

Completed of total project : >16 %*

ESS staff 2015-10-31



ESS Organization



Recent progress inside ESS...



- Following-up on recommendations of the Annual Review (mid-term self-assessment on November 25)...
- Progress on Integrated Master Schedule.
- Allocation of a port for a neutron test beam line.
- Improvement of standardisation (creation of central reference document and request for support of IKRC).
- Improvement/standardisation of tools (Re-organized support for CHES and design tools + selection of Confluence as standard collaboration tool).
- ...

LINAC Tunnel



G01

- Completed Work
- Ongoing Work
- Due to commence in coming 3 Months

Forecast Dates based on current "Production Work Programmes".

Painting and HTC Flooring Section 1-3 completed in w43. Section 4-5 to commence w47.

Initial MEP Installations (Electrical) planned to start 3rd Nov, postponed due to BLT dates. Possible commencement 29 Feb.

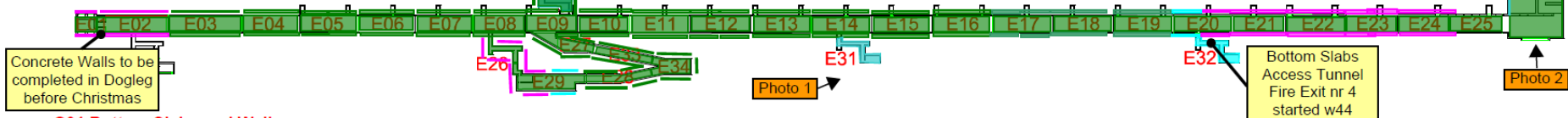


Photo 1, G01 Emergency Exit nr E31



Photo 2, FEB

G01 Summary: Completed	
Base Slabs	100%
Walls	73%
Roof Slab	64%
exit Dogleg	



G01 Bottom Slabs and Walls

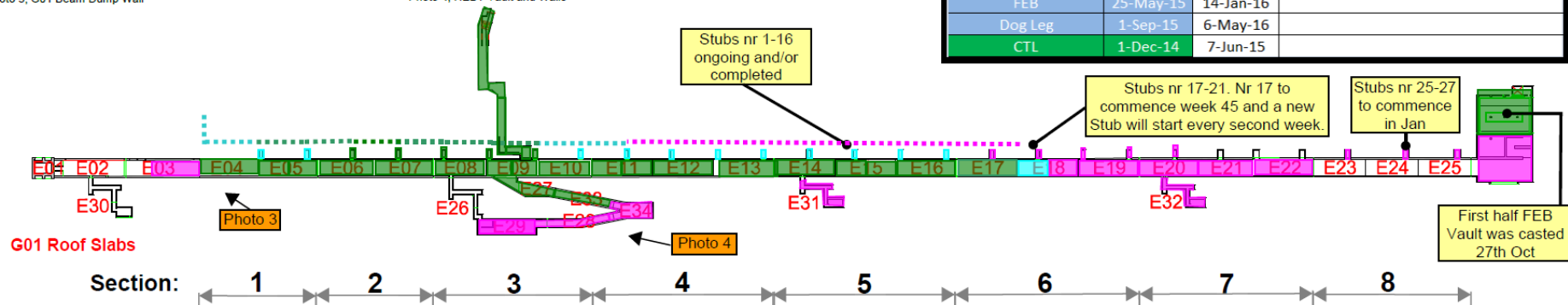


Photo 3, G01 Beam Dump Wall



Photo 4, HEBT Vault and Walls

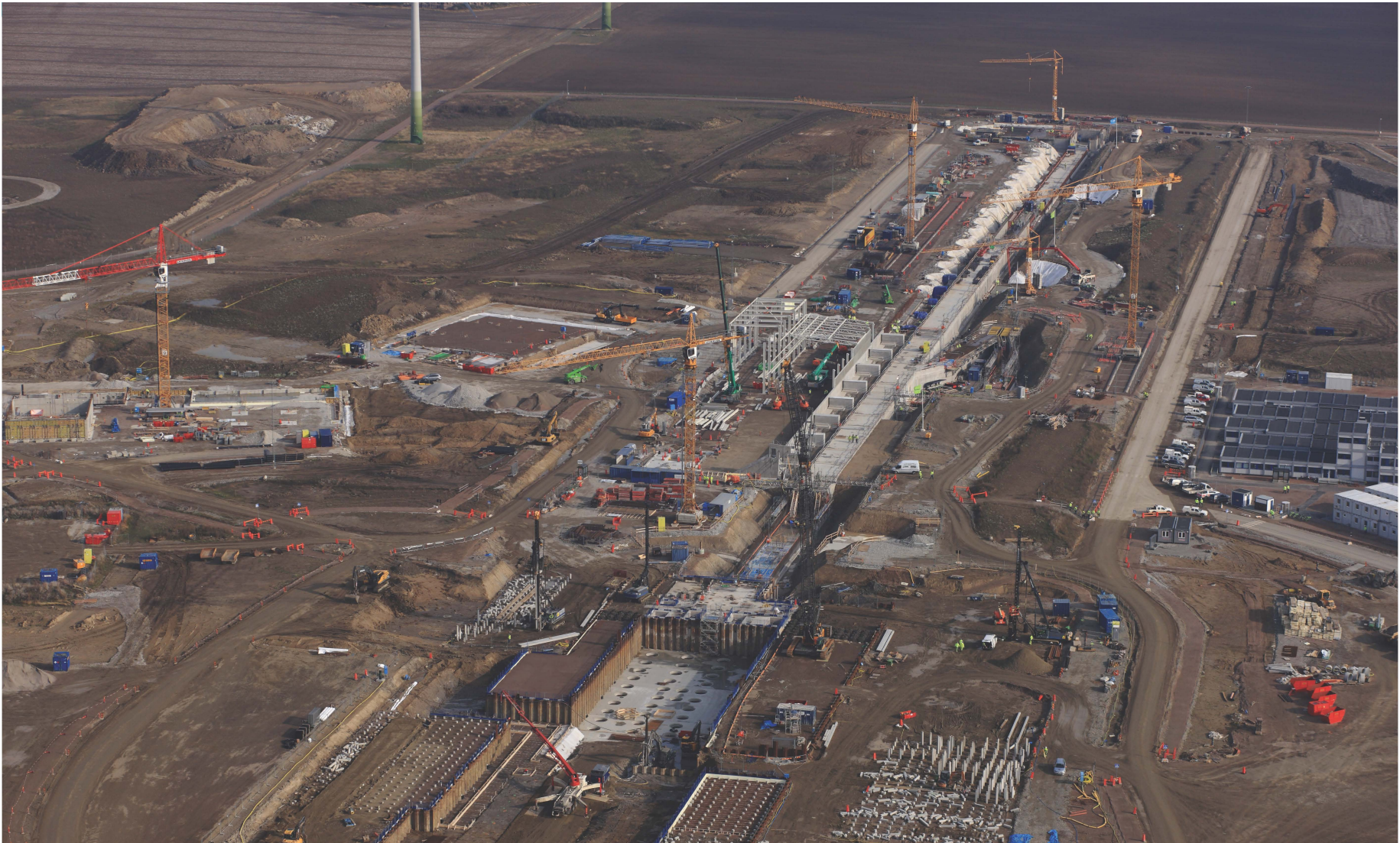
G01, Accelerator Tunnel			
Area	Forecast Start	Forecast Finish	Comments
Section 3 (E10-E08)	3-Nov-14	26-Apr-15	
Section 2 (E07-E06)	12-Dec-14	22-May-15	
Section 1 (E05-E04)	16-Jan-15	22-Jun-15	
Section 4 (E11-E13)	5-Feb-15	3-Sep-15	
Section 5 (E14-E16)	5-Mar-15	16-Oct-15	Roof Slab E17b poured 29-Oct
Section 6 (E17-E19)	25-Mar-15	4-Dec-15	Wall E19b poured 30-Oct
Section 7 (E20-E22)	11-May-15	9-Feb-16	
Section 8 (E23-E25)	11-Jun-15	1-Apr-16	
HEBT	9-Jun-15	15-Mar-16	
FEB	25-May-15	14-Jan-16	
Dog Leg	1-Sep-15	6-May-16	
CTL	1-Dec-14	7-Jun-15	



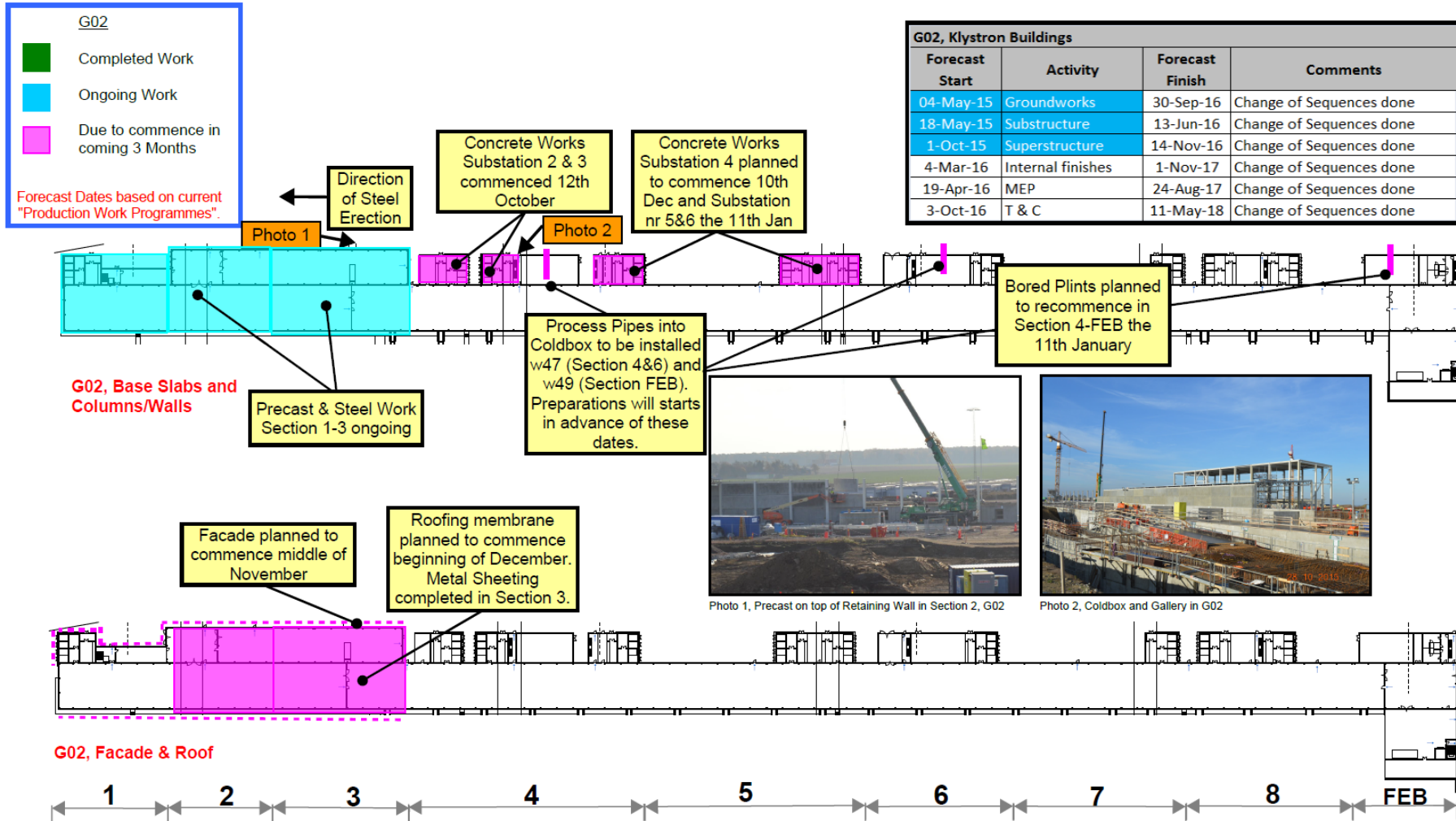
G01 Roof Slabs



Tunnel, target, etc.



Klystron Gallery building



Klystron gallery...



Target building & Experimental halls

Target Works

- Completed Work
- Ongoing Work
- Due to commence in coming 3 Months

Forecast Dates based on current "Production Work Programmes".



Photo 1, Drilling Equipment for Monolith Piles

D03 Installation Gallery. Concrete Works planned to commence 09th of November

Photo 2



Photo 2, Excavation of Installation Gallery D03

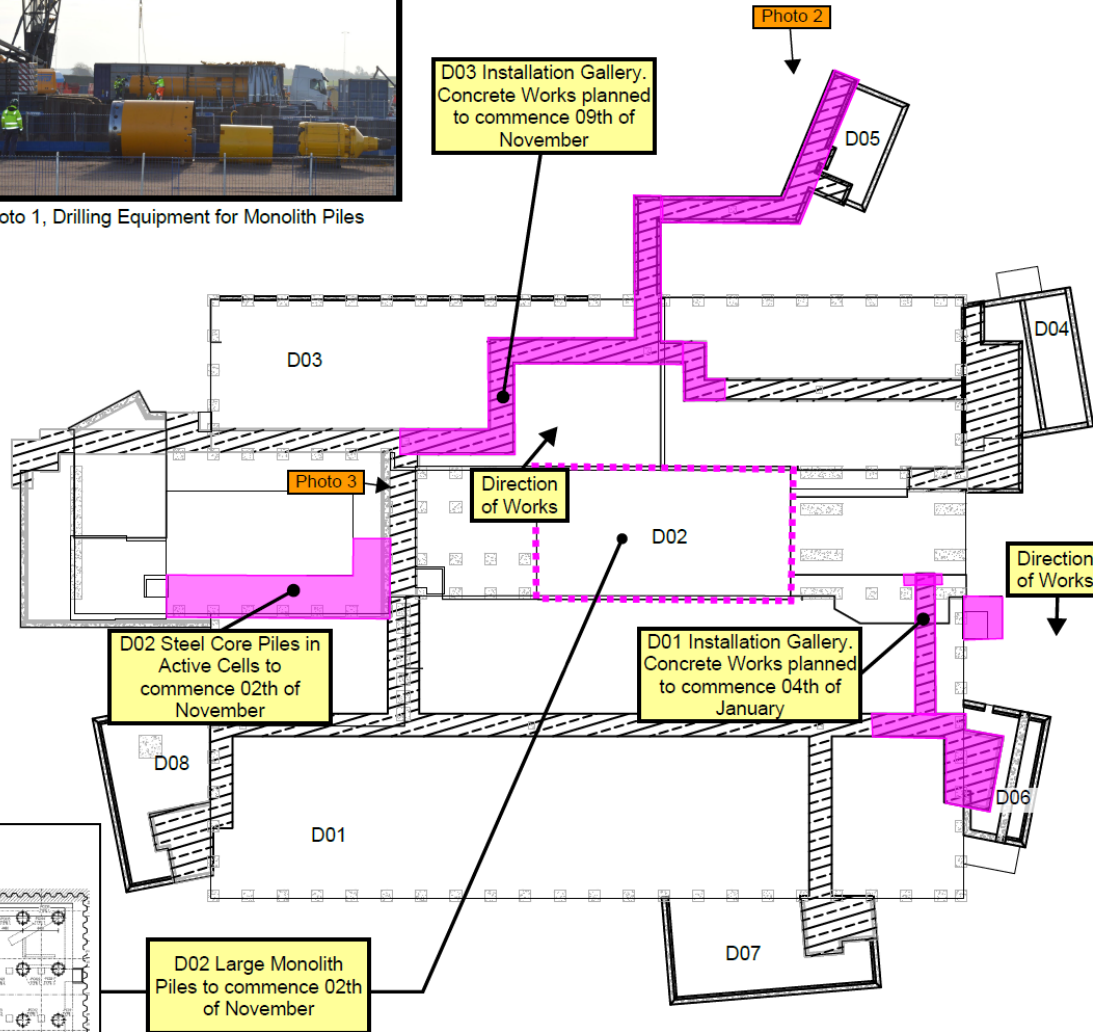
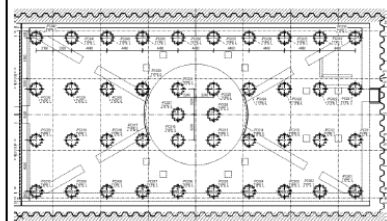


Photo 3, Rig for Monolith Piles in D02

Monolith Piles



Large bored piles



More piles...



Auxiliary buildings & Experimental hall 3



Buildings

- Completed Work
- Ongoing Work
- Due to commence in coming 3 Months

Forecast Dates based on current "Production Work Programmes".

Forecast Start	Activity	Forecast Finish	Comments
16-Feb-15	Groundworks	10-Apr-15	
27-Feb-15	Substructure	30-Apr-15	
20-May-15	Superstructure	17-Feb-16	Facade delayed
10-Aug-15	Internal finishes	30-Aug-15	
31-Aug-15	MEP	17-Feb-16	
25-Sep-15	T & C	5-Feb-16	

Forecast Start	Activity	Forecast Finish	Comments
27-Feb-15	Groundworks	4-May-15	
23-Mar-15	Substructure	2-Jun-15	
3-Jun-15	Superstructure	5-Feb-16	
23-Oct-15	Internal finishes	27-Nov-15	
30-Nov-15	MEP	2-Apr-16	MEP start 30-nov-15
13-Apr-16	T & C	23-Jun-16	

Forecast Start	Activity	Forecast Finish	Comments
13-Apr-15	Groundworks	10-Sep-15	
27-Apr-15	Substructure	5-Oct-15	
30-Jun-15	Superstructure	9-Sep-16	Precast start 24-nov-15
15-Mar-16	Internal finishes	2-Nov-16	
14-Jun-15	MEP Draft	28-Feb-17	On hold, review ongoing
29-Dec-16	T & C Draft	12-Apr-17	On hold, review ongoing

Forecast Start	Activity	Forecast Finish	Comments
14-Aug-15	Groundworks	20-Sep-15	
21-Sep-15	Substructure	24-May-16	
4-Jan-16	Superstructure	30-Sep-16	Precast start 04-jan-15
5-Apr-16	Internal finishes	23-Jun-16	
22-Apr-16	MEP	11-Oct-16	BLT dates affecting
15-Jun-16	T & C Draft	24-Sep-16	



Photo 4, H05 ABB Switchgear

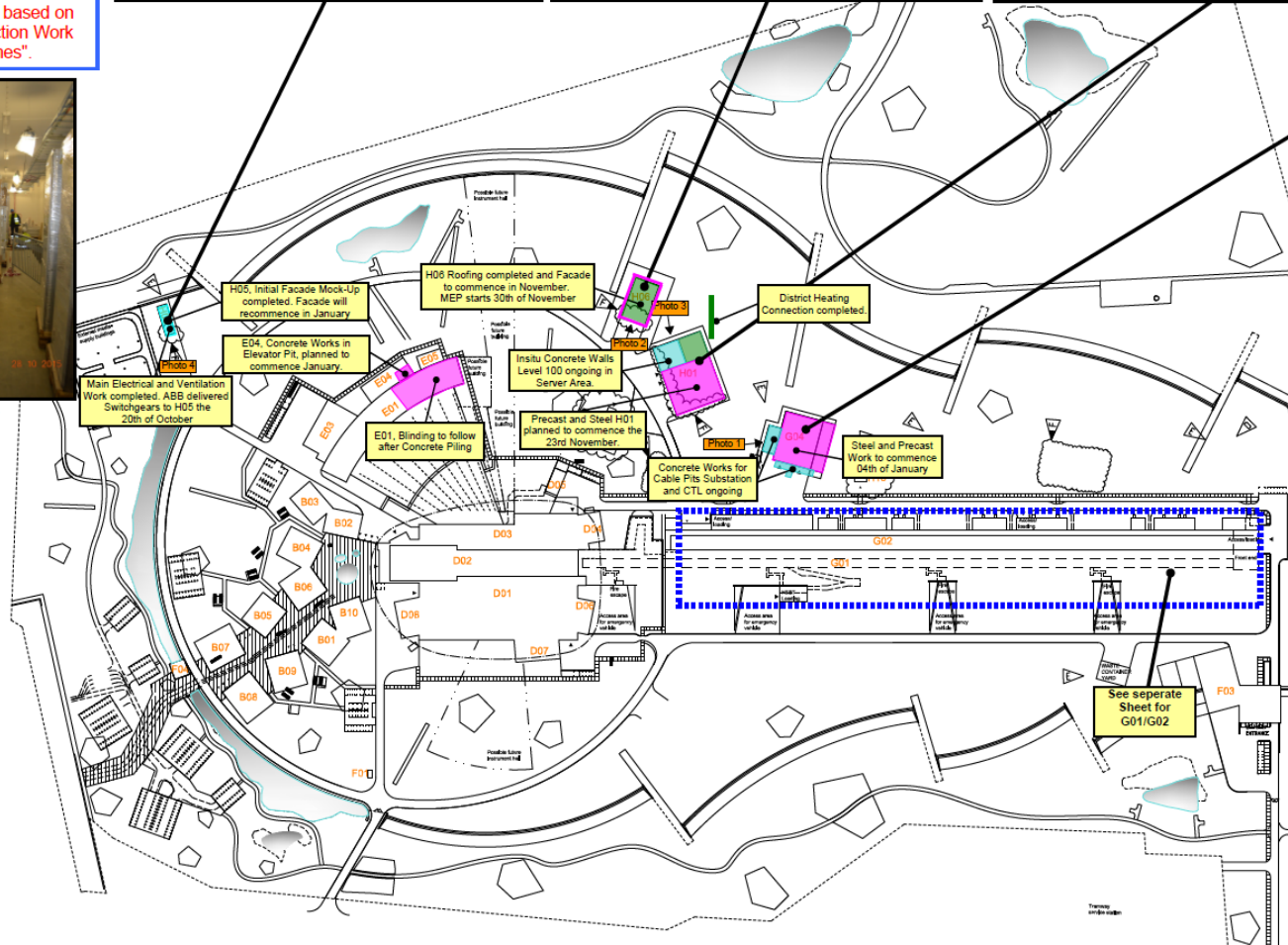


Photo 1, Cable Pits G04

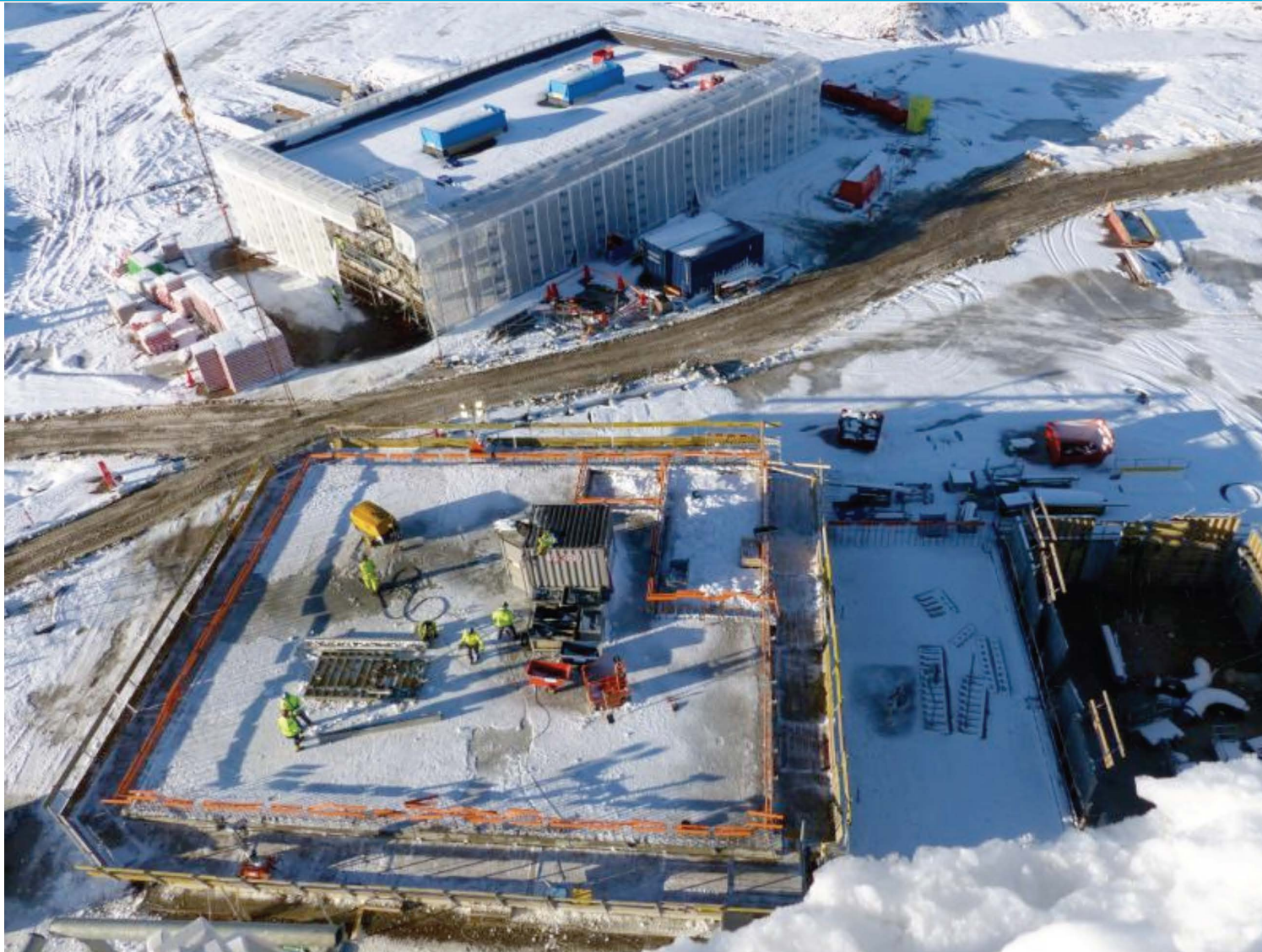


Photo 2, Roof on H06

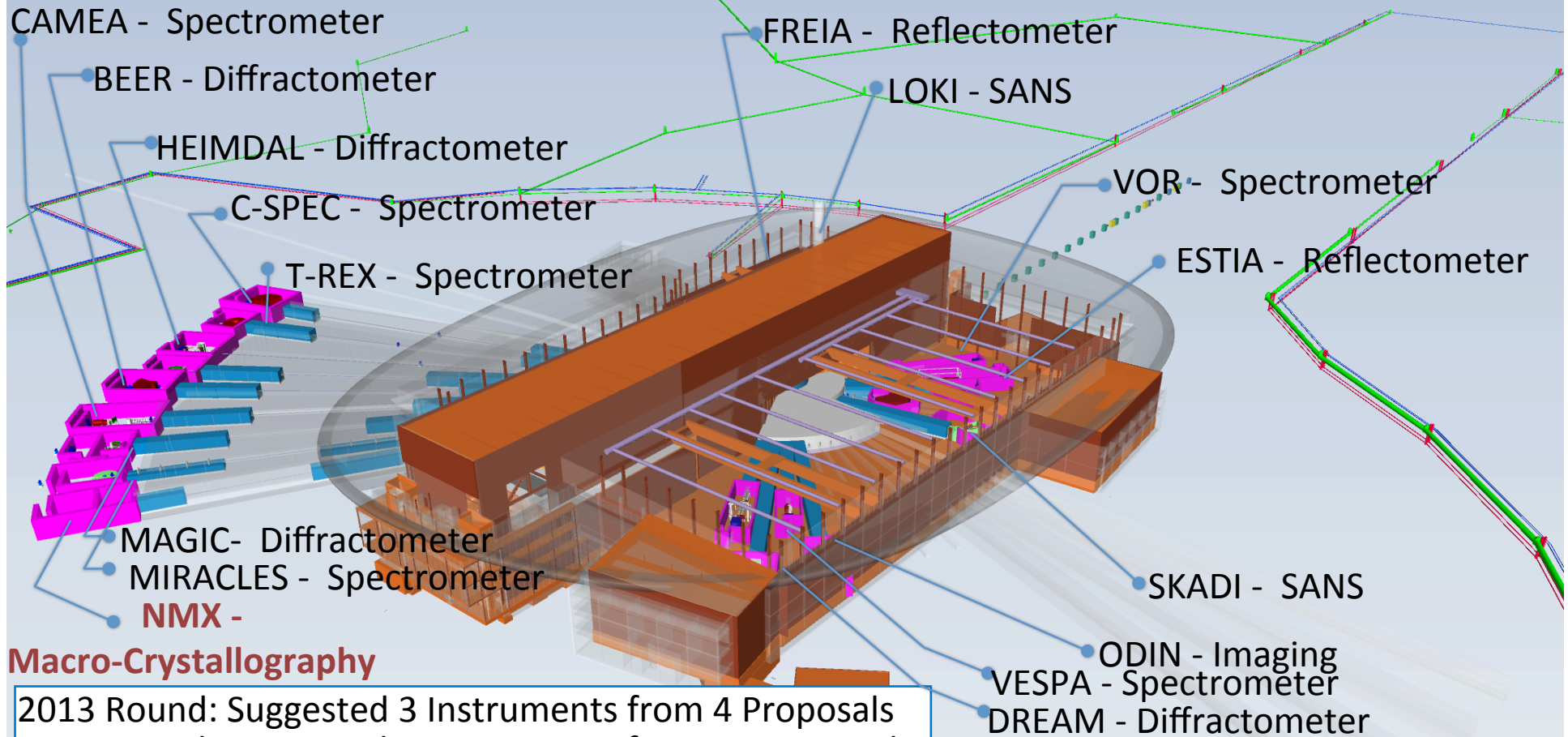


Timpani 2015/05/08

Some auxiliary buildings...



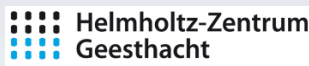
16-Instrument Suite Taking Shape



Macro-Crystallography

2013 Round: Suggested 3 Instruments from 4 Proposals
 2014 Round: Suggested 9 Instruments from 16 Proposals
 2015 Round: Suggested 4 Instruments from 12 proposals

Leading Institutions :



Summary



- Intense activity and good progress of the ESS programme.
- Technical activities are on-going at Lund and in-kind partners.

Key issues in the near future:

- Submission of Request for Installation Permit (2nd step of licensing). Deadline: May 2016
- Signature of In-Kind agreements and negotiation of additional ones. Solution of pending issues (VAT-exemption, taxation of seconded staff...).
- Securing on-time start of work of in-kind partners (funding...).
- ...

An aerial architectural rendering of a campus. The central focus is a large, modern building with a curved, multi-level design. To its right is a dense cluster of smaller, white, rectangular buildings. The campus is surrounded by green fields, some with a reddish-brown hue, and a highway on the right side. The text "Thank you for your attention!" is overlaid in the center in a large, blue, outlined font.

Thank you
for your attention!