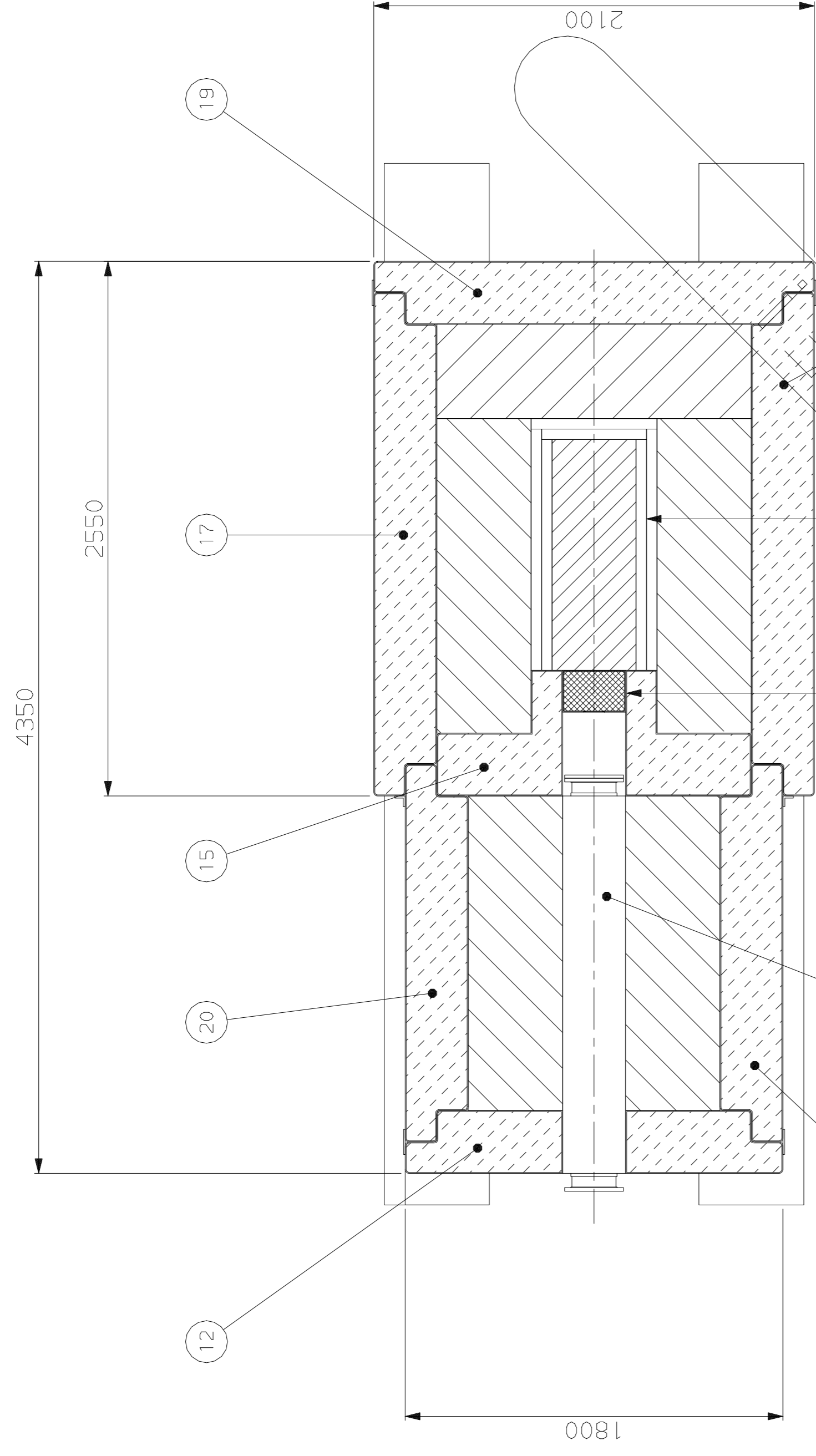


A1-SI-2559-300-00-A

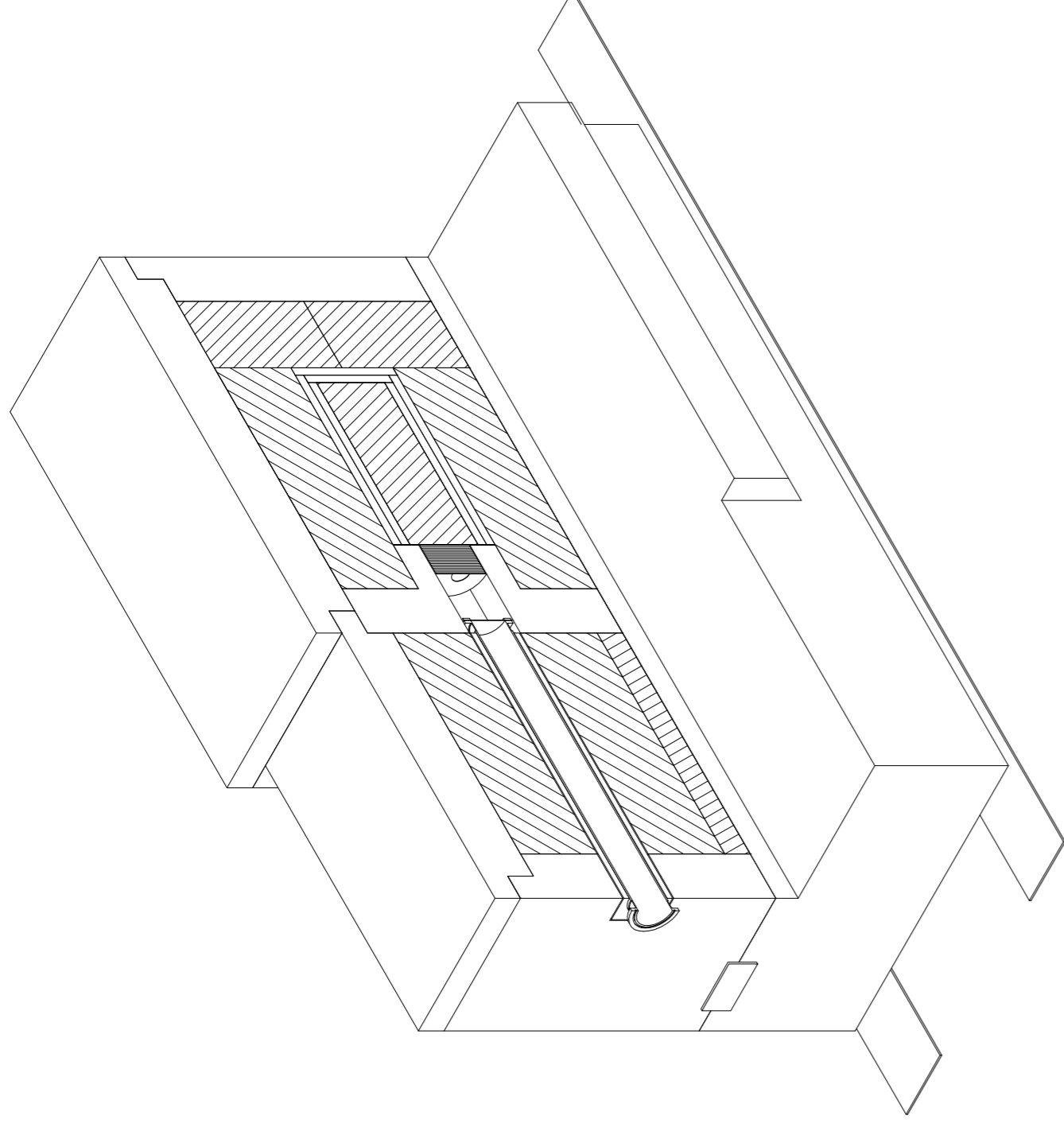
PROJECTION

THIS DRAWING CONFORMS TO B.S.308

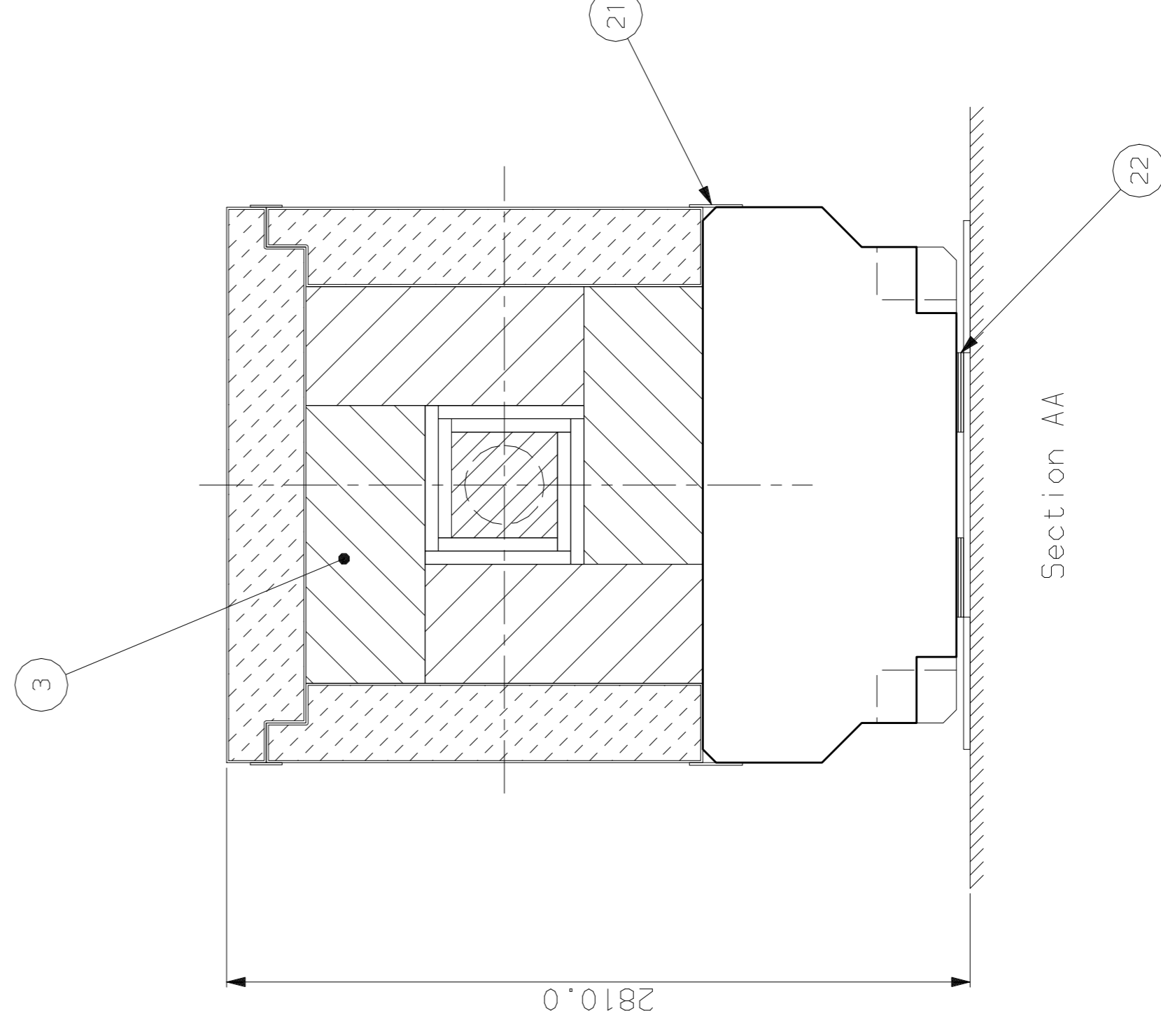
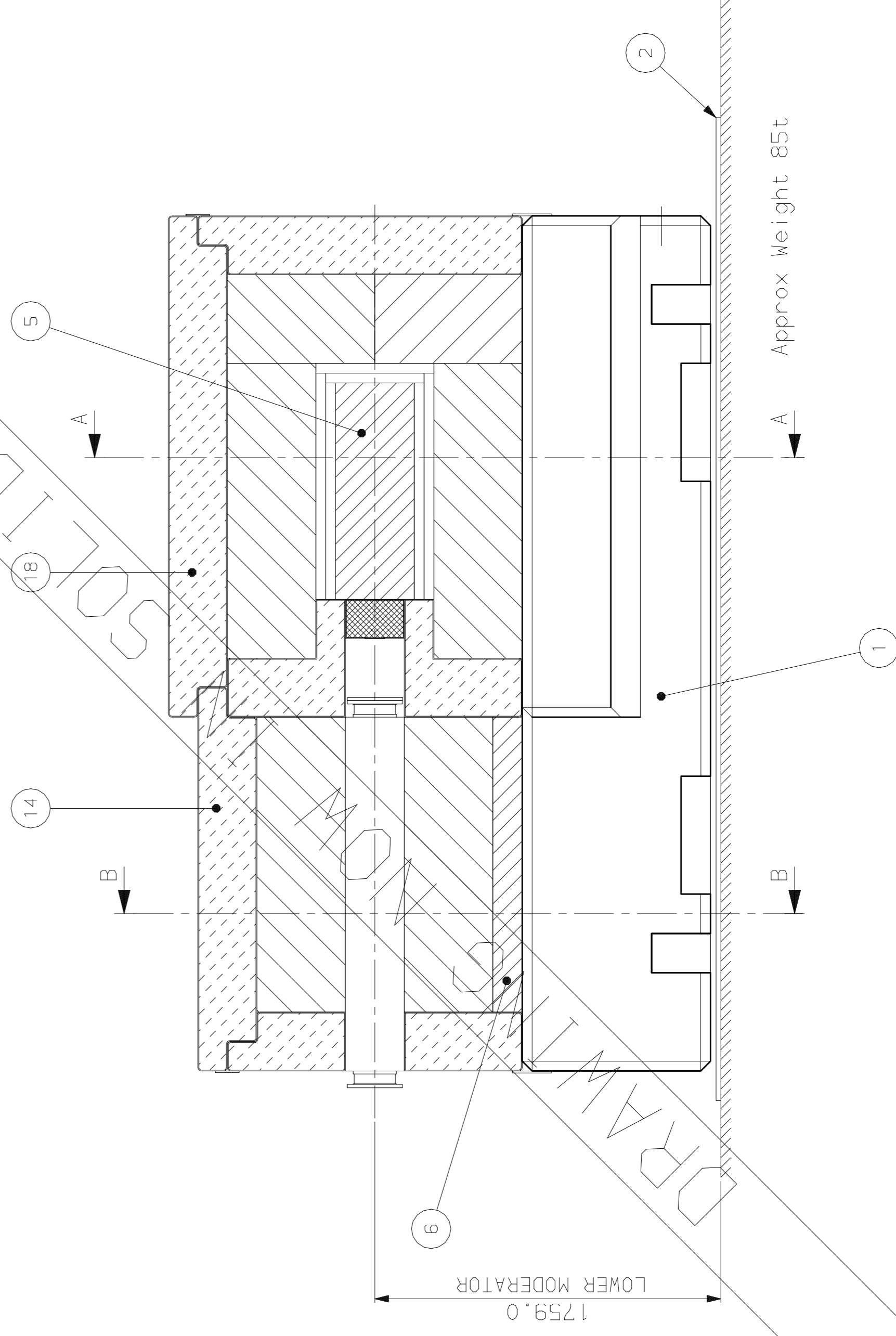
1 2 3 4 5 6 7 8 9 10 11 12 13 14 15



SECTIONED ISOMETRIC VIEW



BORATED WAX, 30% BY WEIGHT BORIC ACID IN WAX
 D.O. 3259/2 ASTOR-STAG
 BORATED POLYETHYLENE, 5% BORON
 PE-HWB5 SIMONA



ITEM No.	DRAWING No. CAT No.	DESCRIPTION	No. OFF ASSY.			REMARKS
			a	b	c	
1	1-SI-2559-301	CONCRETE BASE	1	-	-	
2	1-SI-2559-326	FLOOR PLATE	1	-	-	
3	2-SI-2559-305	SHIELD BLOCK A	4	-	-	STEEL
4	2-SI-2559-306	SHIELD BLOCK B	6	-	-	STEEL
5	2-SI-2559-307	CORE	1	-	-	STEEL
6	2-SI-2559-308	PLATE	1	-	-	STEEL
7	1-SI-2559-309	GET LOST TUBE	1	-	-	BORATED WAX FILL
8	3-SI-2559-310	WINDOW	1	-	-	AL ALLOY
9	3-SI-2559-311	CLAMP FLANGE	1	-	-	
10	1-SI-2559-312	B4C CANNISTER	1	-	-	BORON CARBIDE 20 GRIT
11	1-SI-2559-313	POLYTHENE SHIELD	1	-	-	BORATED POLYETHYLENE
12	1-SI-2559-314	FRONT WALL	1	-	-	BORATED WAX FILL
13	1-SI-2559-315	FRONT SIDE PANEL RH	1	-	-	BORATED WAX FILL
14	1-SI-2559-316	FRONT ROOF PANEL	1	-	-	BORATED WAX FILL
15	1-SI-2559-317	CENTRE WALL	1	-	-	BORATED WAX FILL
16	1-SI-2559-318	REAR SIDE PANEL RH	1	-	-	BORATED WAX FILL
17	1-SI-2559-319	REAR SIDE PANEL LH	1	-	-	BORATED WAX FILL
18	1-SI-2559-320	REAR ROOF PANEL	1	-	-	BORATED WAX FILL
19	1-SI-2559-321	REAR WALL	1	-	-	BORATED WAX FILL
20	3-SI-2559-322	FRONT SIDE PANEL LH	4	-	-	BORATED WAX FILL
21	3-SI-2559-323	PLATE	10	-	-	
22	1-SI-2559-324	SHIM PACK	4	-	-	

ISSUE	DATE	MOD. NO.	DRN. BY	DWJB	CHKD.	MANUF.	STATUS
A	14APR98	---		DWJB		*	

TOLERANCES UNLESS STATED FINISH
 ORIGINAL SCALE 1:20
 DO NOT SCALE

MATERIAL & SPEC. SURFACE TEXTURE μm
 UNLESS STATED 0 1000.0mm

USED ON 1-SI-2558-900

© CCLRC 1997

THE CENTRAL LABORATORY OF THE RESEARCH COUNCILS RUTHERFORD APPLETON LABORATORY, CHILTON, OXON OX11 0QX.

TITLE BEAM DUMP ASSEMBLY
 LOWER MODERATOR SHIELDING

MAPS A1-SI-2559-300-00-A