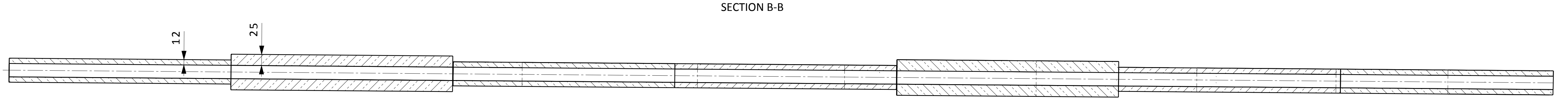
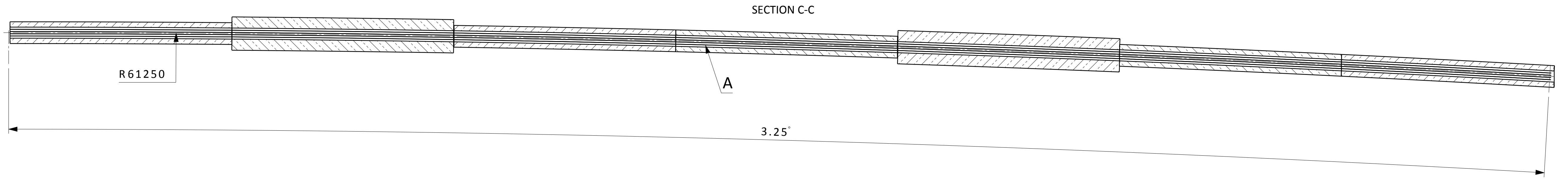
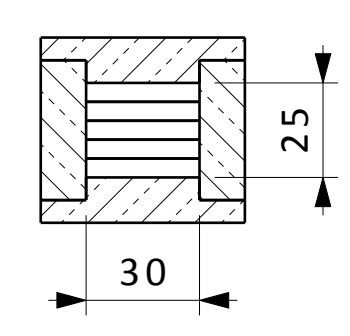


NOTES:
 TCS = Target coordinate system
 FP-S = Moderator south sector focal point.
 ISCS = Instrument source coordinate system. Source point of instrument optical system on moderator. Defined by instrument team as translation and/or rotation from TCS.
 A: Multichannel Bender: R=61,25m, 5 Channels, M=3
 Implementation on beamport N07

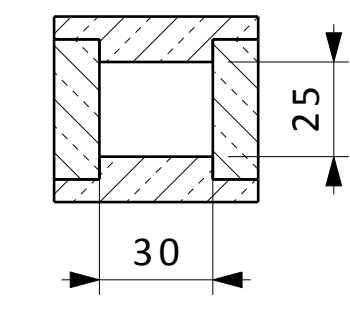
ASSY WEIGHT: - kg		DRAWING TYPE, TITLE, SUPPLEMENTARY TITLE	
General Tolerances		LOKI NBOA Assembly	
Linear Dimensions, Form and Position: ISO 2768-mK		R2-R5.5	
Chamfers, Radii and Angular Dim's: ISO 2768-vK		MODELED BY	DRAWING NUMBER
SURFACE FINISH: Min. Ra 3.2		eriknilsson	18/04/2017
Documentation protection as per ISO 16016		DRAWN BY	DRAWING RELEASED
ISO 16016		eriknilsson	
EUROPEAN SPALLATION SOURCE		CHECKED BY	LIFECYCLE LABEL
DESIGN SITE		APPROVED BY	REV.
ESS Lund		QUALITY CONTROLLED BY	SHEET
			Preliminary 1.0 1/2
			LEVEL OF MATURITY MC SIZE SCALE
			M4 A1 1:5
			Produced to ISO 1101, 8015 and 1302



SECTION CUT D-D
AT 1894mm
Scale 1:2



SECTION CUT E-E
AT 5373,9
Scale 1:2



ASSY WEIGHT: - kg		DRAWING TYPE, TITLE, SUPPLEMENTARY TITLE	
General Tolerances		LOKI NBOA Assembly	
Linear Dimensions, Form and Position:		R2-R5,5	
Chamfers, Radii and Angular Dim's:		ISO 2768-mK	MODELED BY eriknilsson
SURFACE FINISH Min. Ra 3.2		ISO 2768-vK	DRAWING CREATED 18/04/2017
Documentation protection as per ISO 16016		eriknilsson	DRAWING RELEASED
EUROPEAN SPALLATION SOURCE		DESIGN SITE	
ESS Lund		CHECKED BY	
APPROVED BY		LIFE CYCLE LABEL	
QUALITY CONTROLLED BY		REV. SHEET	
Produced to ISO 1101, 8015 and 1302		Preliminary 1.0 2/2	
LEVEL OF MATURITY MC		SCALE	
M4 A1		1:5	