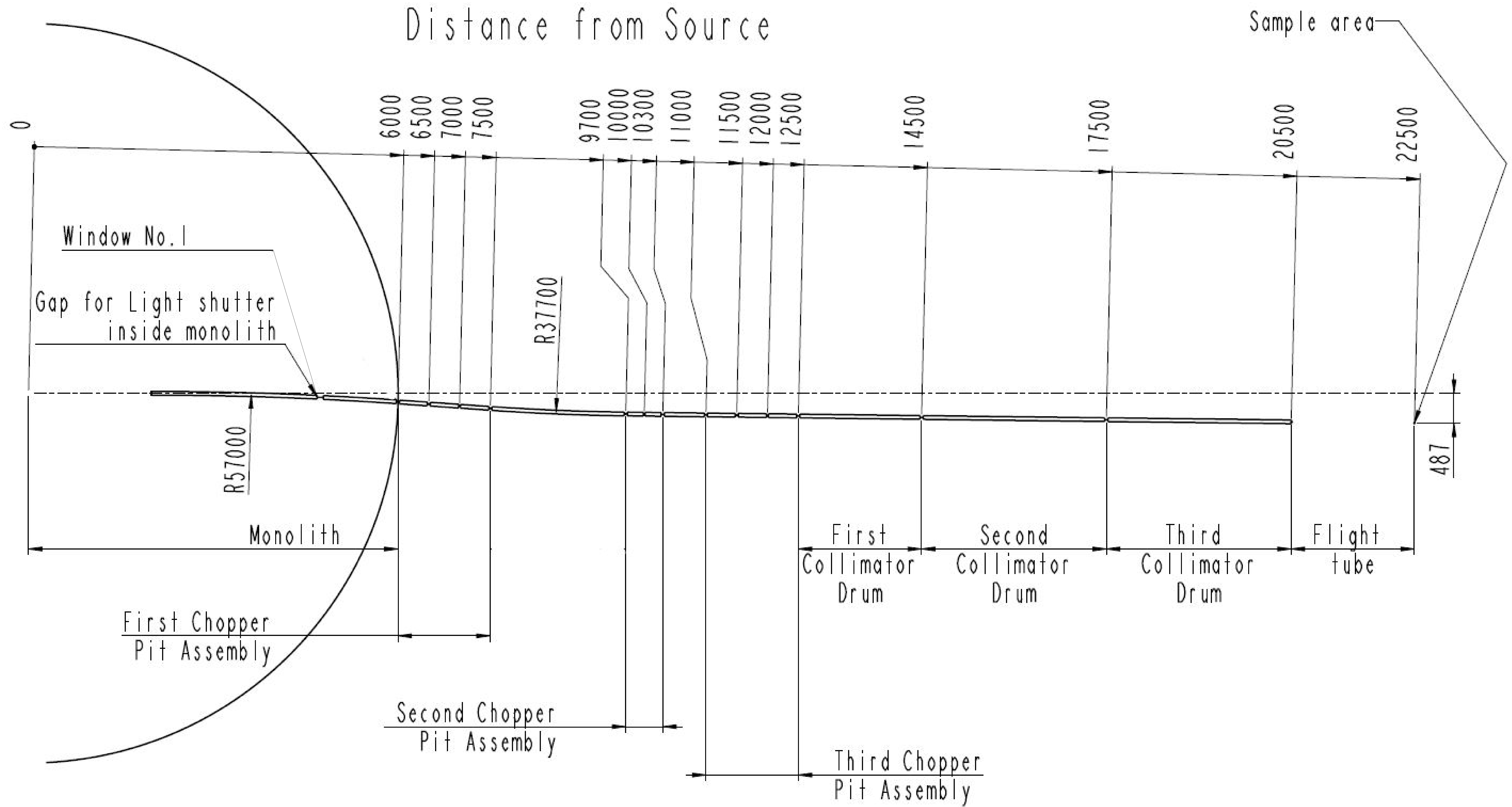
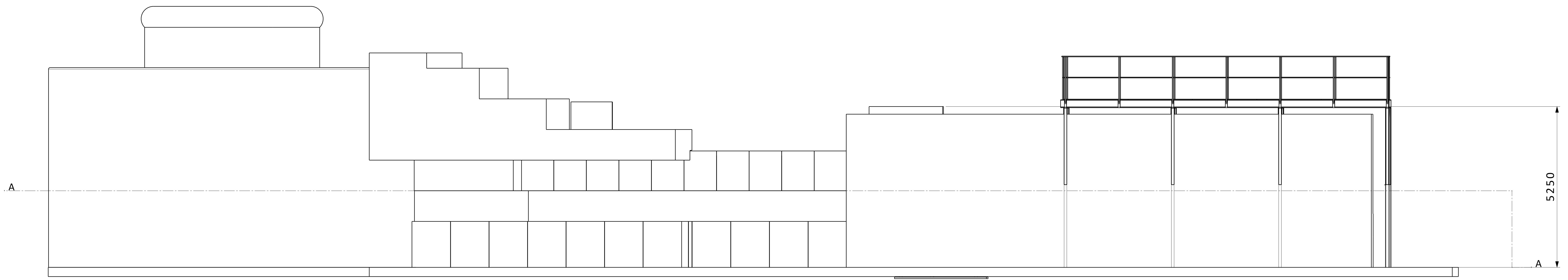


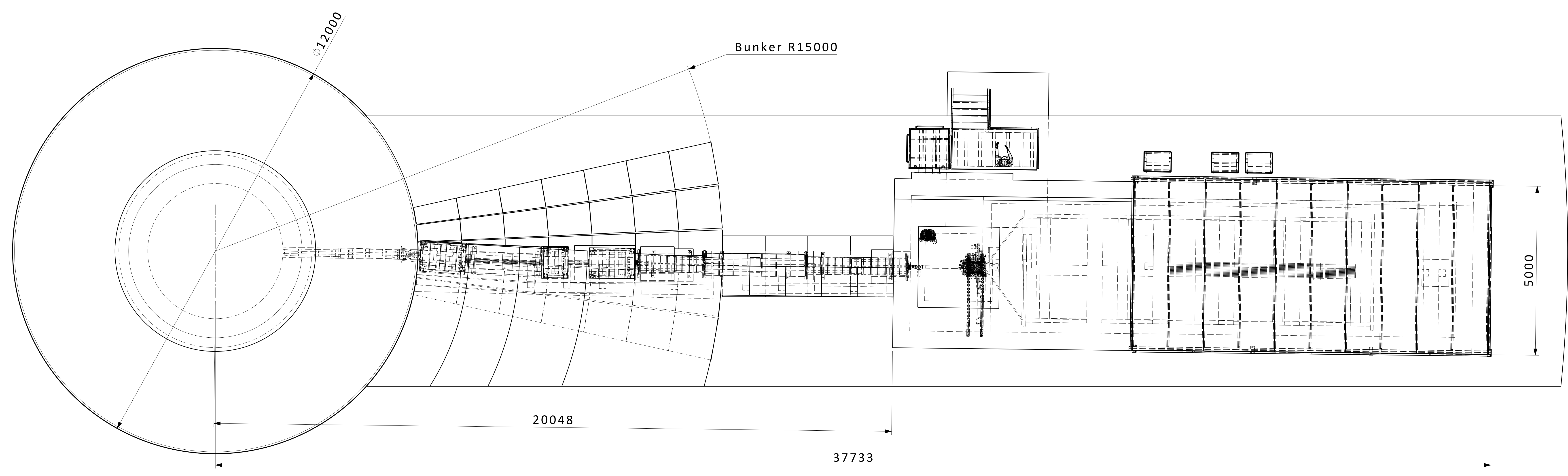
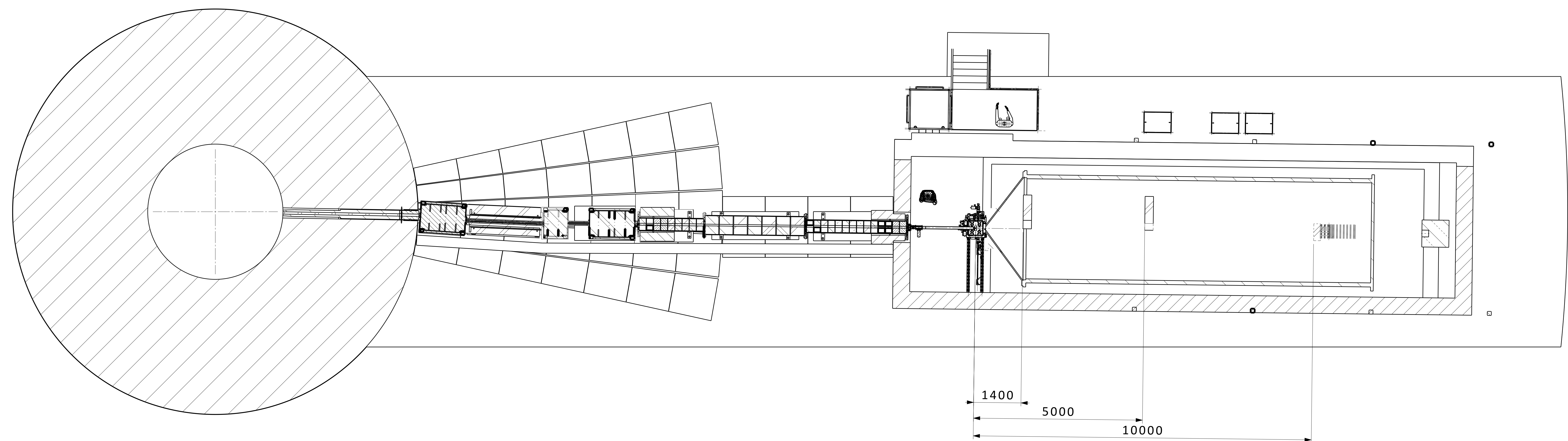
# LoKI LAYOUT



ASSY WEIGHT: 0.00 kg General Tolerances Linear Dimensioning: ISO 2768-mK Chamfers, Ribs and Angular Dim.: ISO 2768-vK SURFACE FINISH: Min. Ra 3.2 Documentation protection as per ISO 15016		DRAWING TITLE: SUPPLEMENTARY TITLE Preliminary Assembly Phase I DRAWING NUMBER: ESS-0020385.4 DATE: 17/06/2014 DRAWN BY: claralopez DATE: 27/11/2014 CHECKED BY: claralopez DATE:	
EUROPEAN SPALLATION SOURCE		PRELIMINARY CAD SOFTWARE: CATIA V6 B A0 1:1 This drawing is produced to ISO 1101, 8015 and 1302	



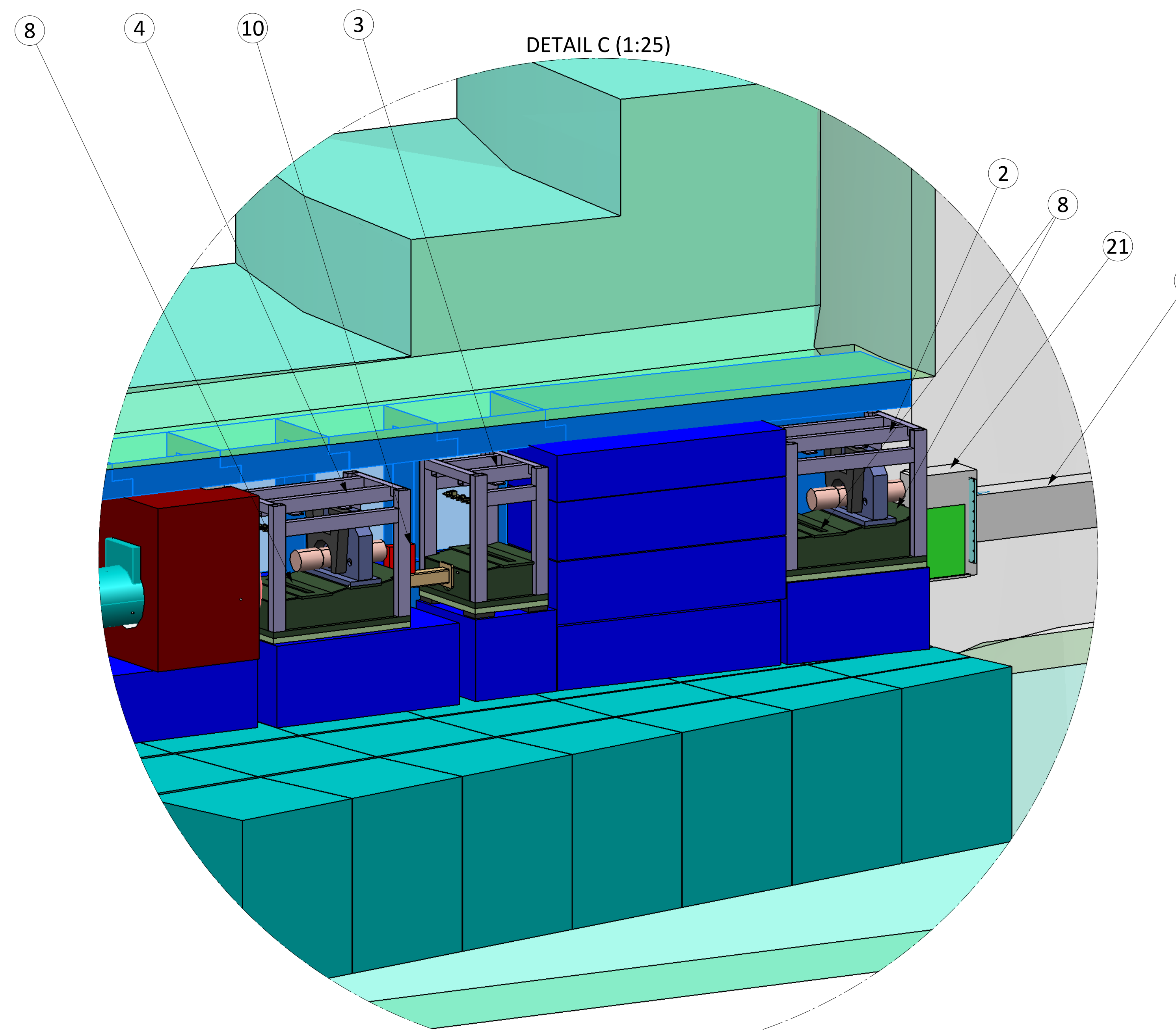
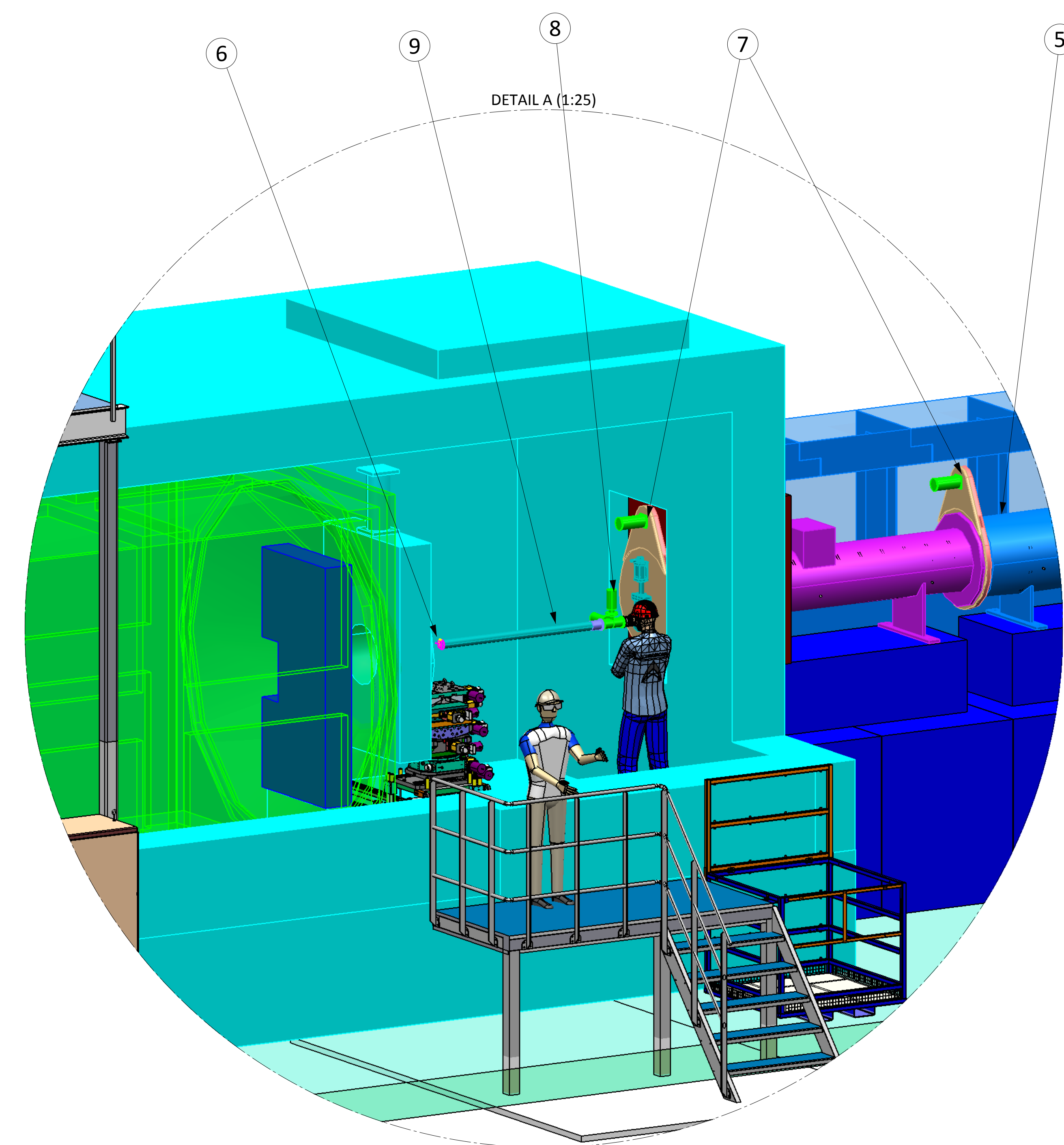
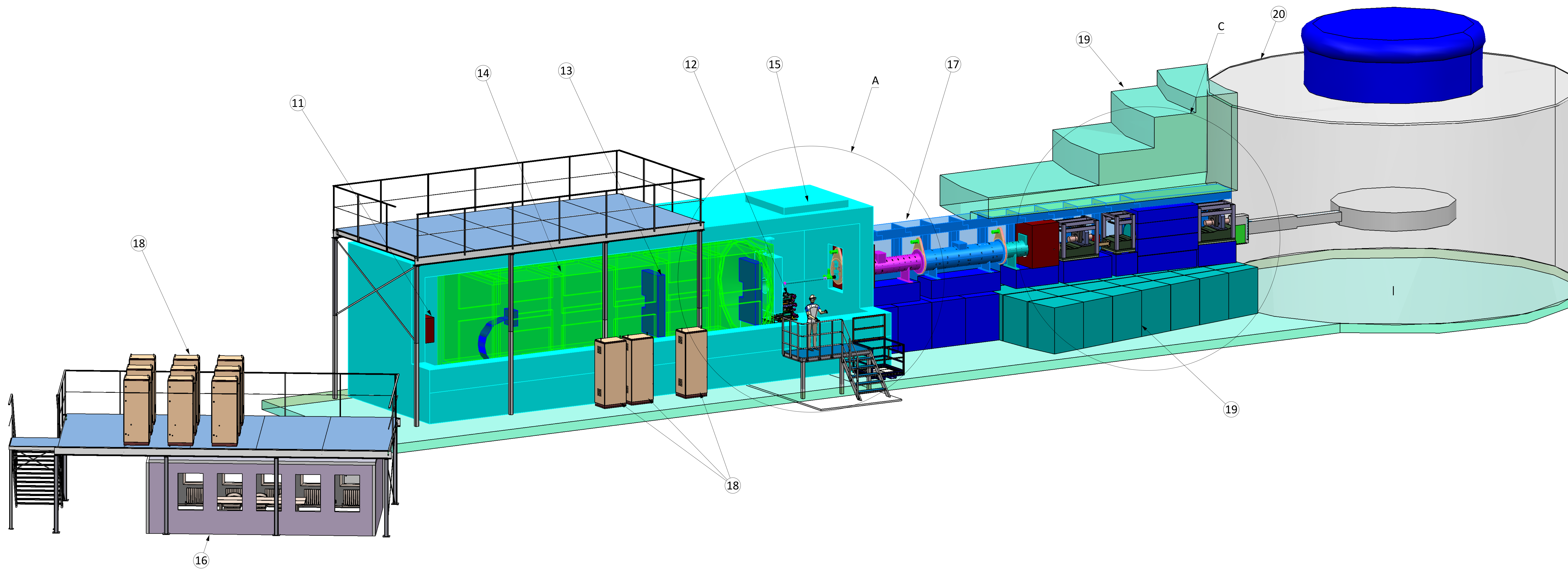
(1:50)



SECTION A-A (1:50)

<b>ASSY WEIGHT: 0.00 kg</b> General Tolerances Linear Dimensioning: ISO 2768-mK Form and Position: ISO 2768-vK Chamfers, Holes and Angular Dim.: ISO 2768-vK SURFACE FINISH: Min. Ra 3.2 Documentation protection as per ISO 16016		DRAWING TITLE: SUPPLEMENTARY TITLE <b>LoKI Prelimmar assembly Prelimmar Assembly Phase I</b> DRAWING NUMBER: ESS-0020385.3 DATE: 17/06/2014 CHECKED BY: [Signature] DATE: 18/11/2014 CHECKED BY: [Signature]	
EUROPEAN SPALLATION SOURCE ESS Lund		APPROVED BY: [Signature] DATE: [Blank] CAD SOFTWARE: CATIA V6 B A0 1:1 This drawing is produced to ISO 1101, 8015 and 1302	



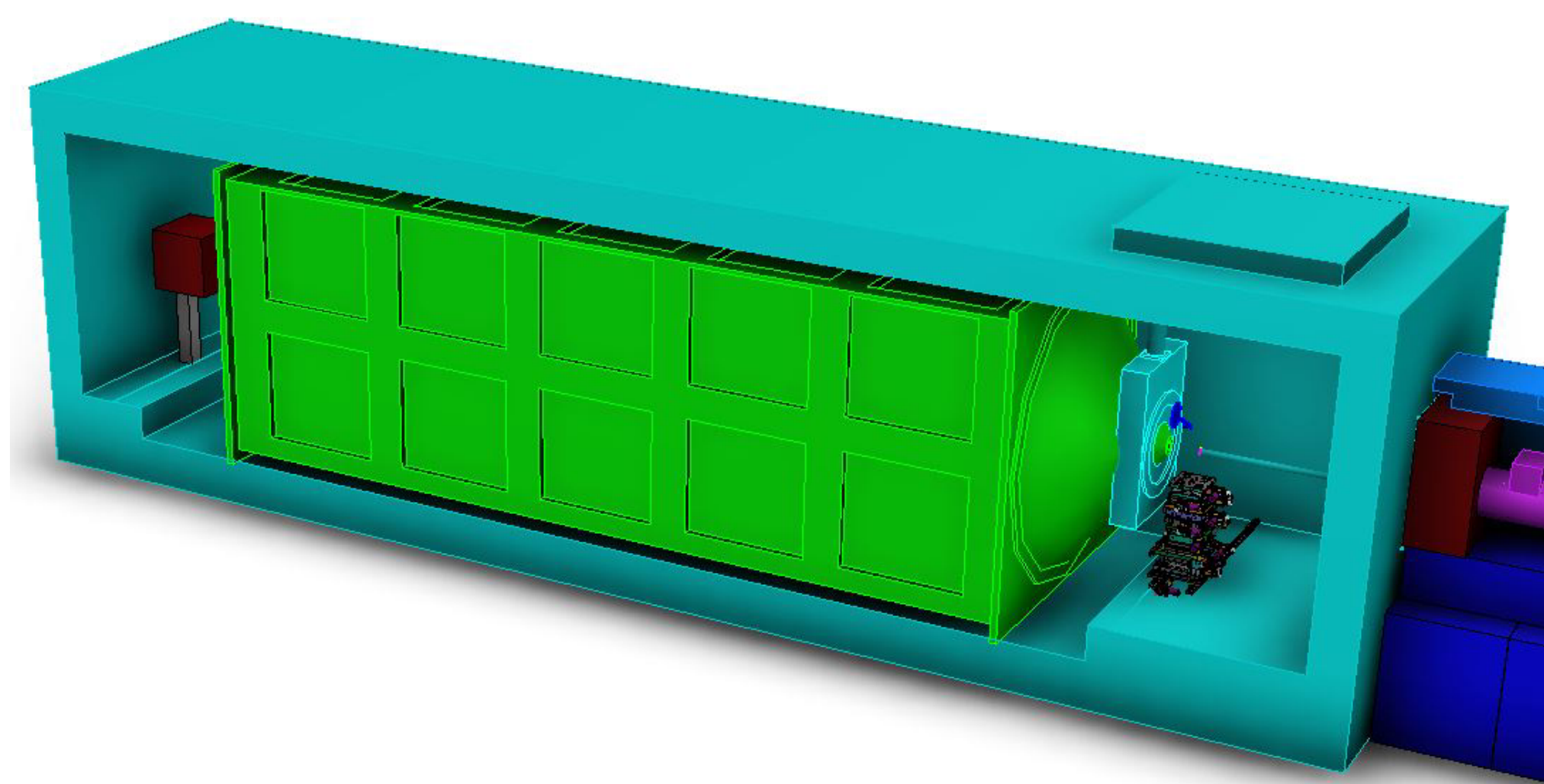
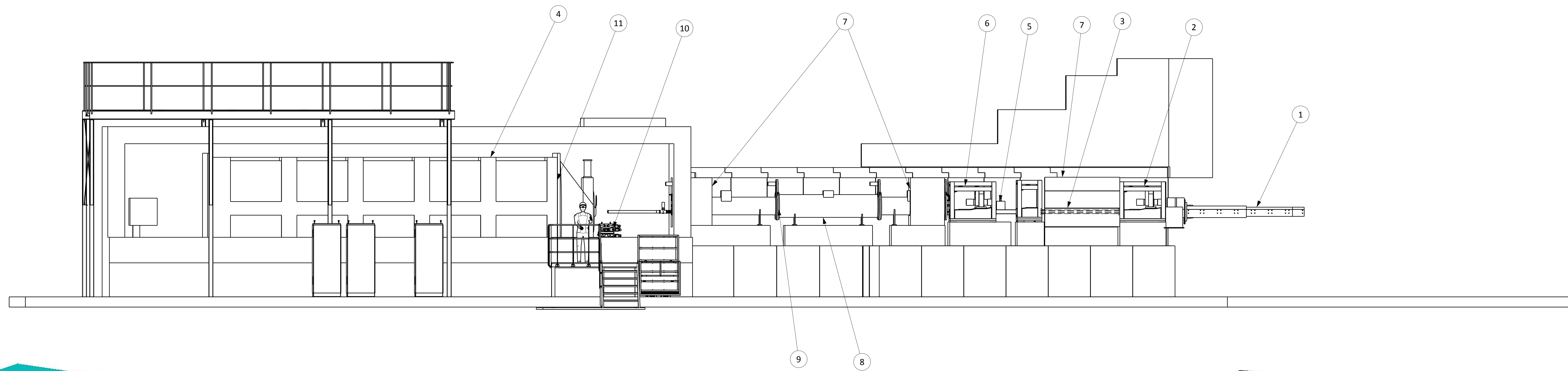


ID	QTY	UNIT	DESCRIPTION	REVISION
1	1	1	Ball Valve	
2	1	1	Actuator	
3	1	1	Burner	
4	1	1	Control Valve	
5	1	1	Control Valve	
6	1	1	Control Valve	
7	1	1	Control Valve	
8	1	1	Control Valve	
9	1	1	Control Valve	
10	1	1	Control Valve	
11	1	1	Control Valve	
12	1	1	Control Valve	
13	1	1	Control Valve	
14	1	1	Control Valve	
15	1	1	Control Valve	
16	1	1	Control Valve	
17	1	1	Control Valve	
18	1	1	Control Valve	
19	1	1	Control Valve	
20	1	1	Control Valve	
21	1	1	Control Valve	

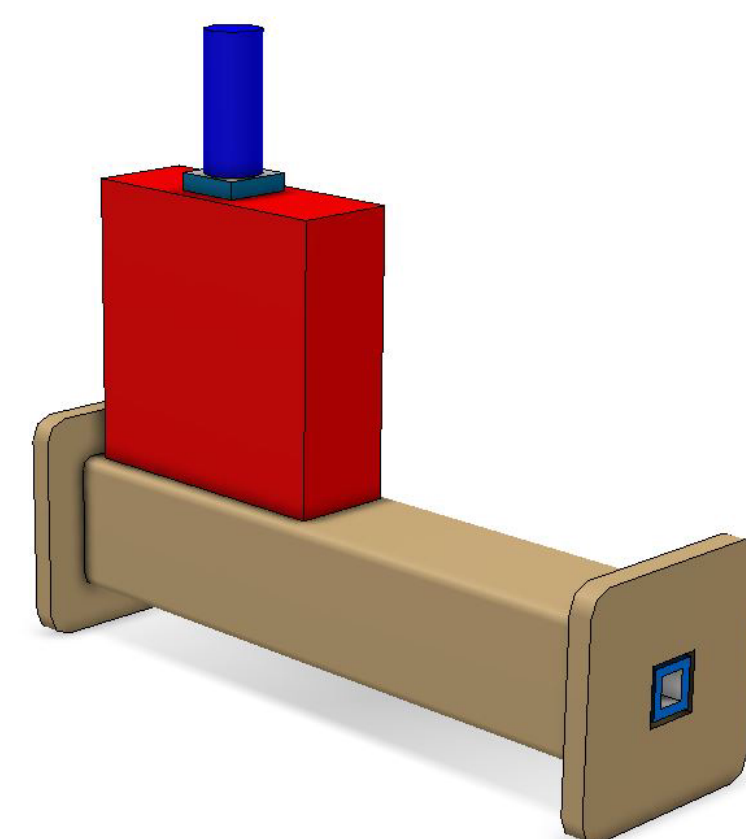
  

ASSY WEIGHT: 0.00 kg		DRAWING TITLE: SUPPLEMENTARY TITLE	
General Tolerances		LoKI Preliminary assembly	
Linear Dimensioning		Preliminary Assembly Phase I	
Form and Position		DRAWING NUMBER	
Chamfers, Holes and Angles: Min. Ra 3.2		ESS-0020385	
SURFACE FINISH: Min. Ra 3.2		DRAWN BY: claralopez	
Documentation protection as per ISO 16016		DATE: 25/11/2014	
EUROPEAN SPILLATION SOURCE		CHECKED BY: Preliminary	
ESS Lund		DATE: 25/11/2014	
APPROVED BY: B AO		SCALE: 1:1	
CAD SOFTWARE: CATIA V6		SIZE: B AO	
This drawing is produced to ISO 1101, 8015 and 1302			





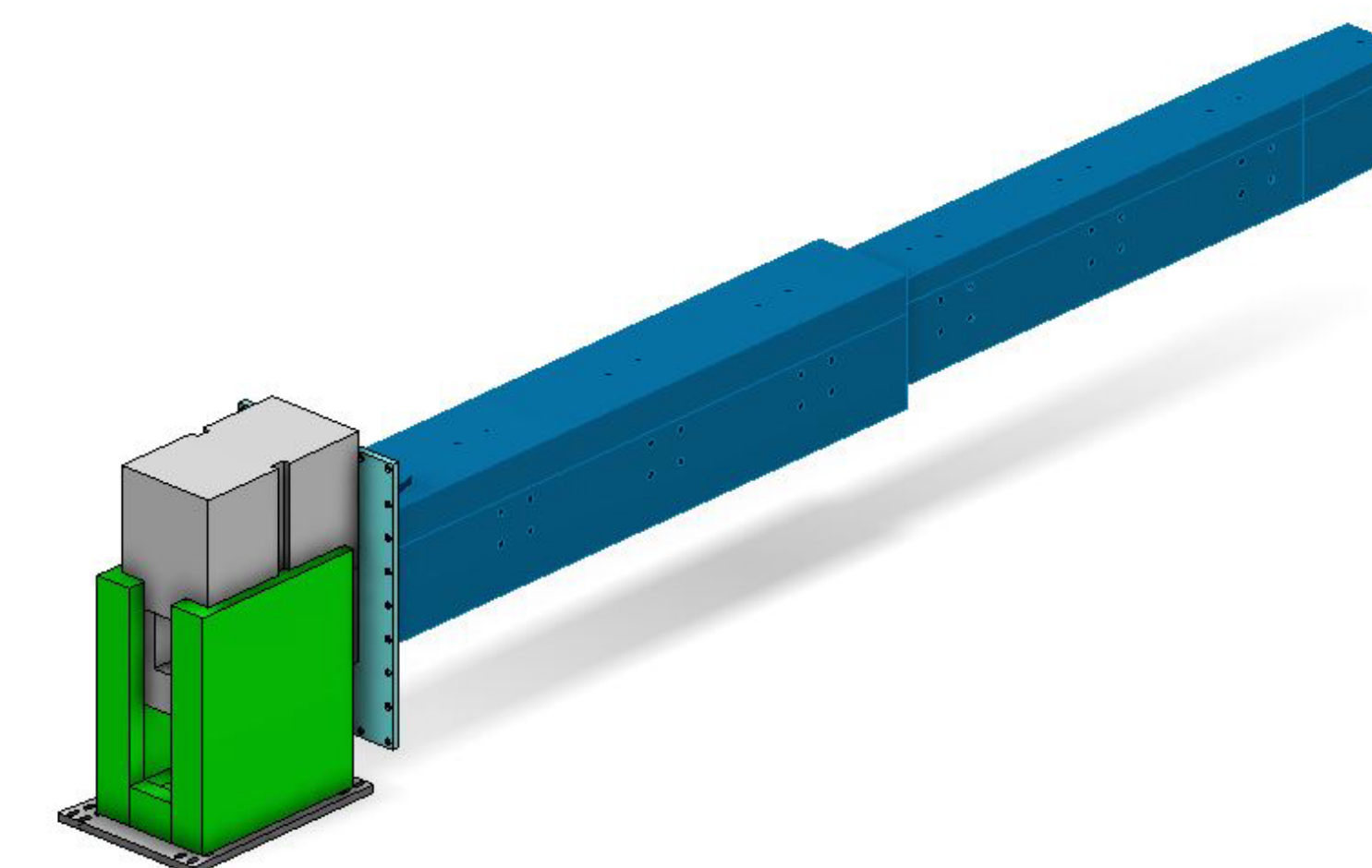
11) Cave



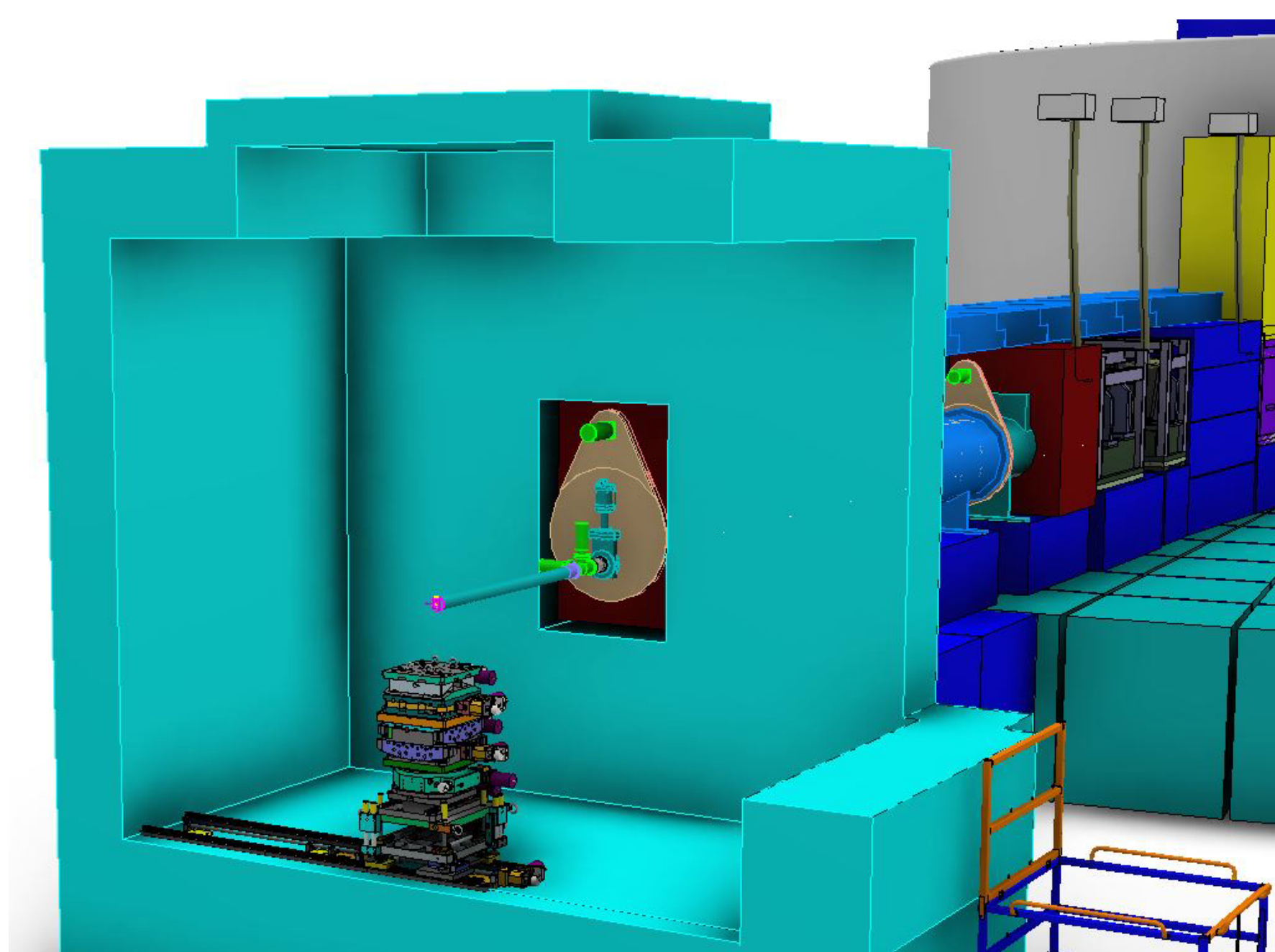
5) Secondary Shutter



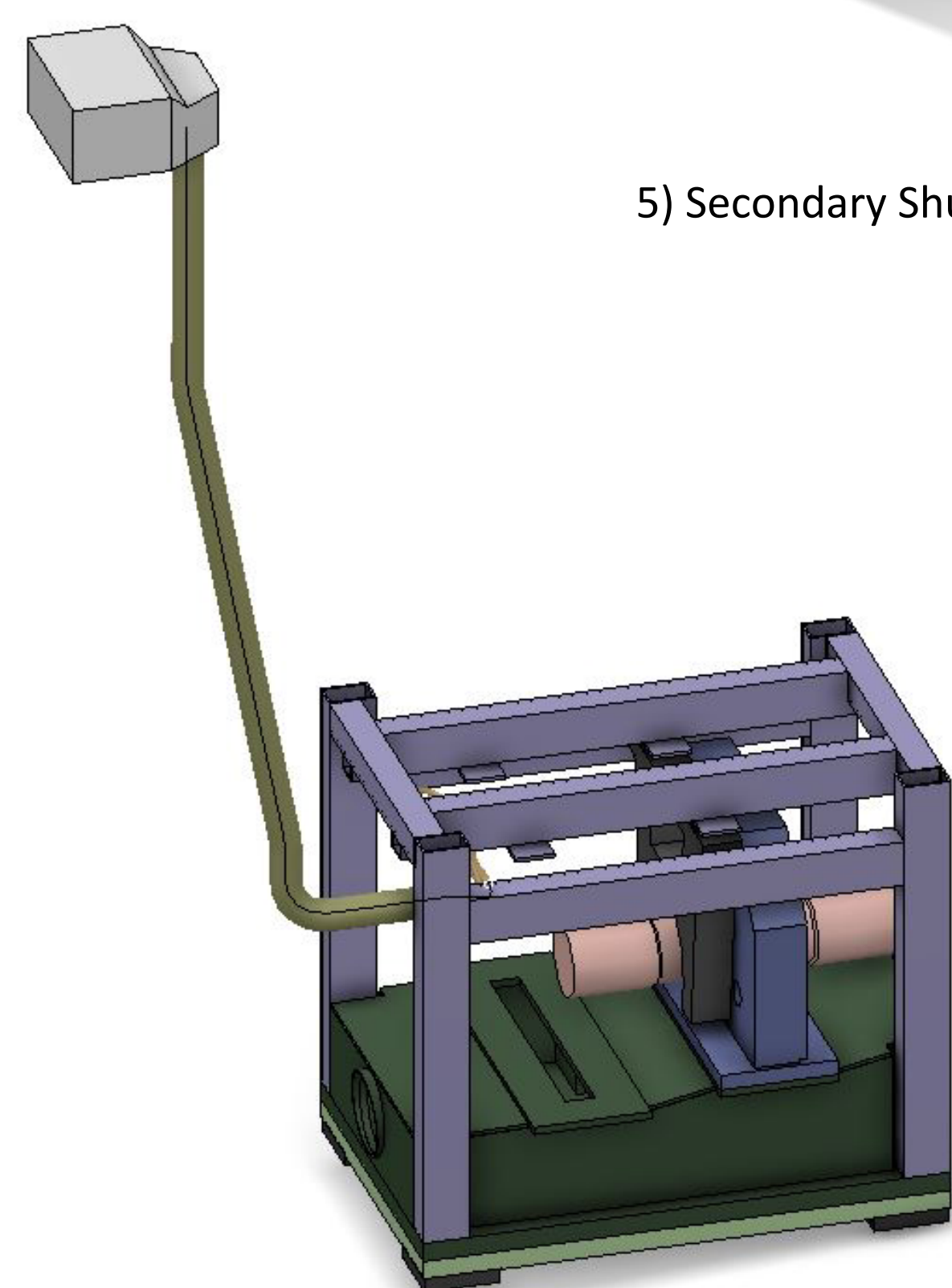
3) Second Bender



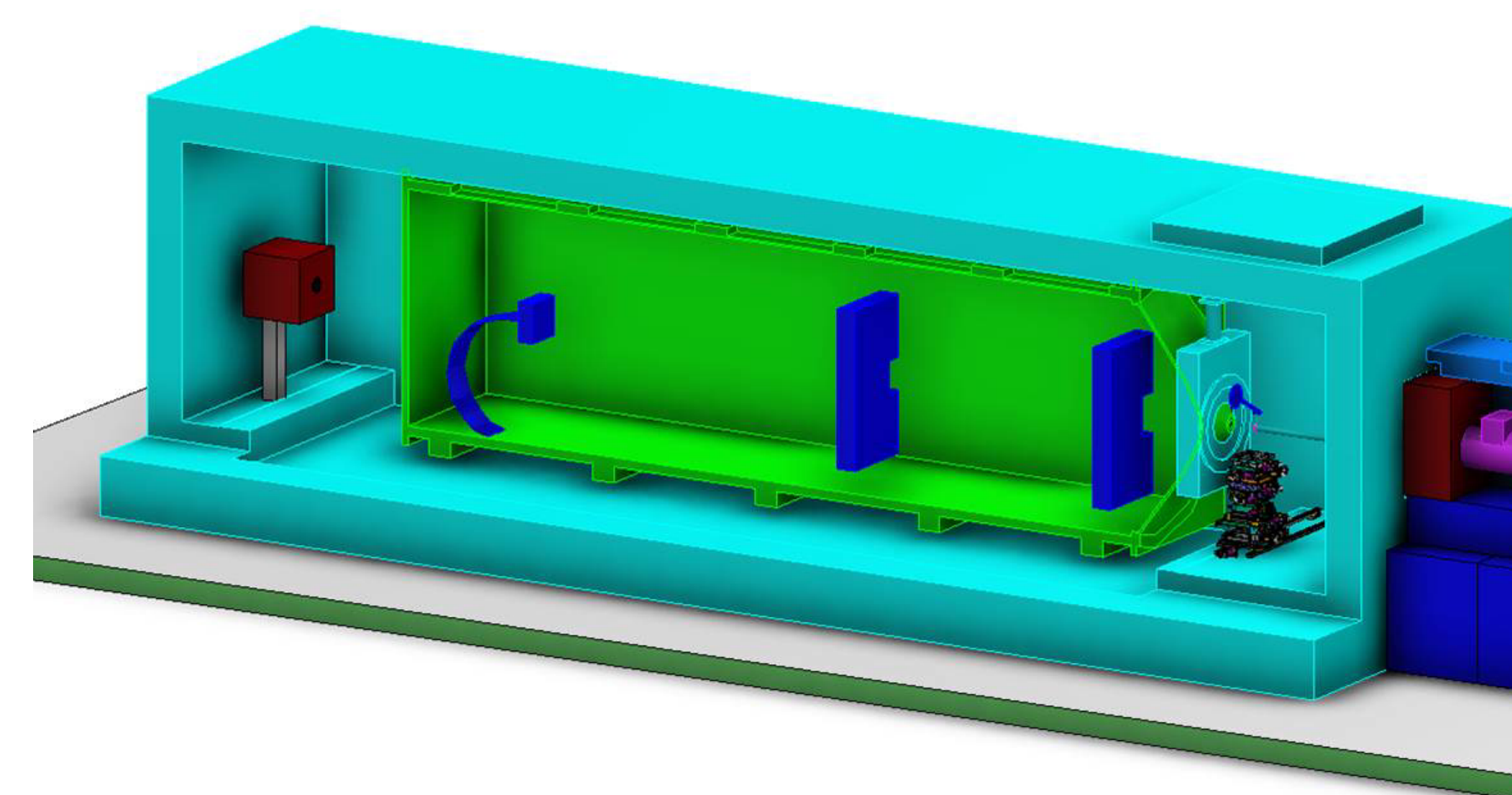
1) Light Shutter and monolith insert  
DRAFT DESIGN



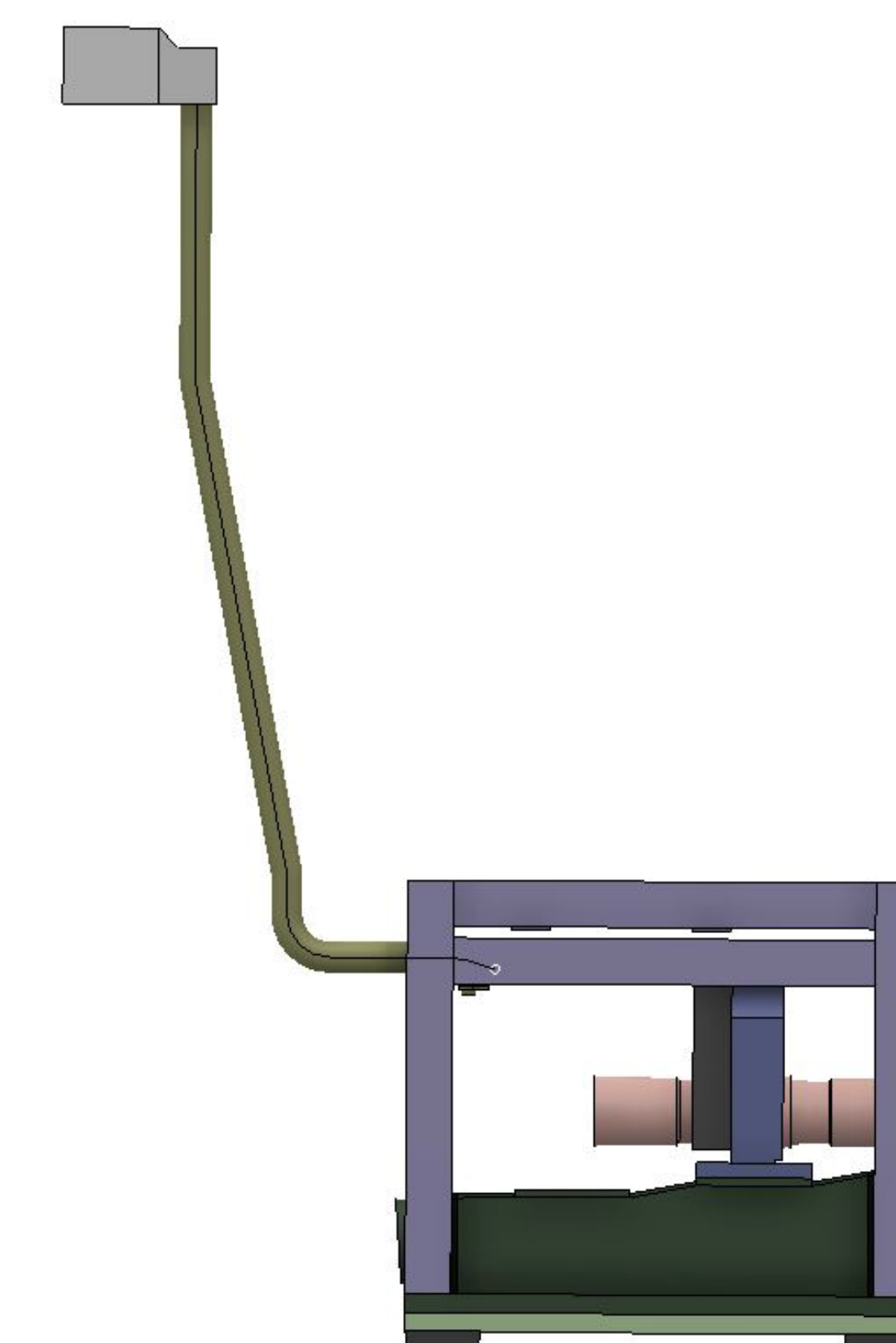
10) Sample positioning



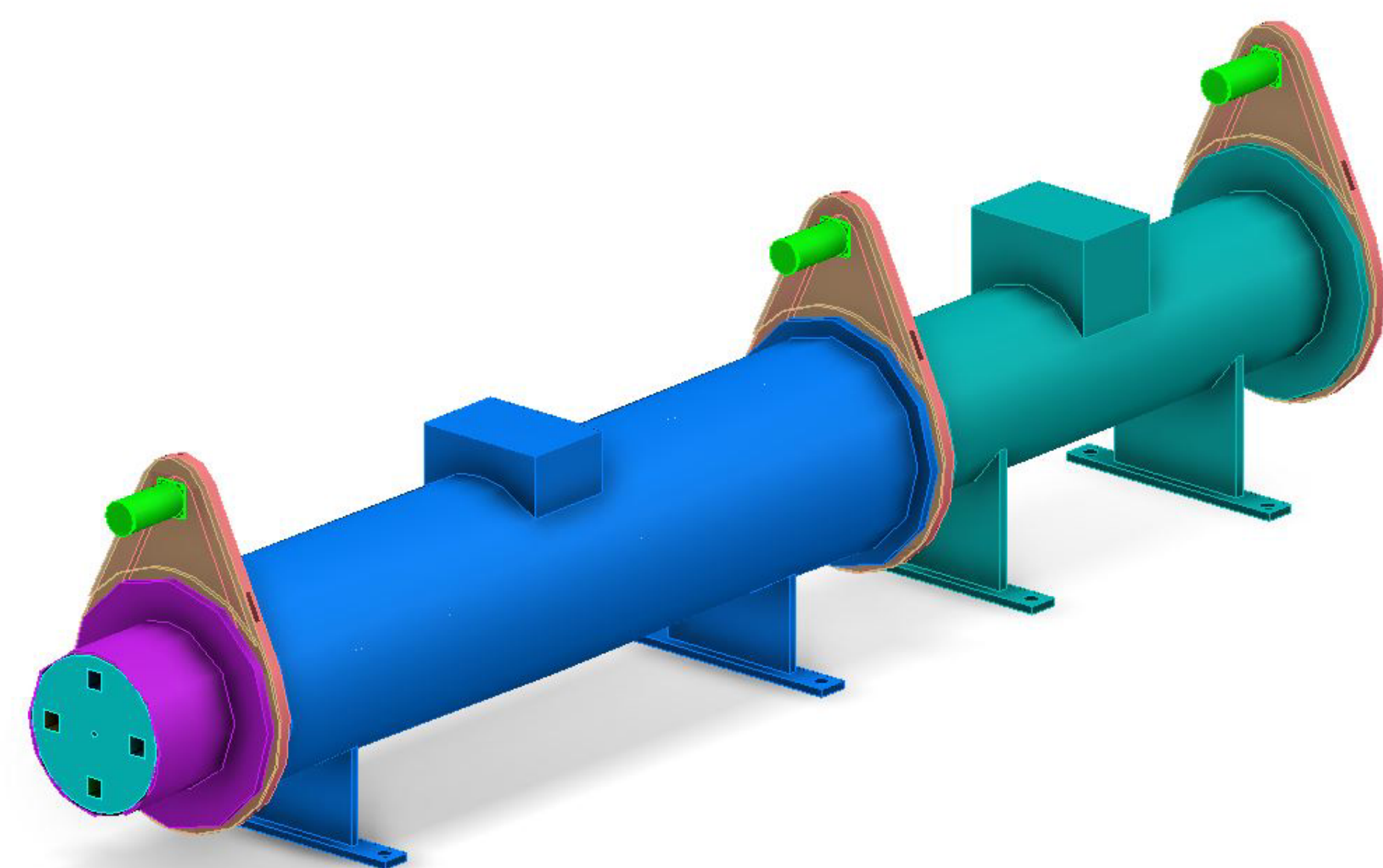
6) Chopper Pit Assembly No.3



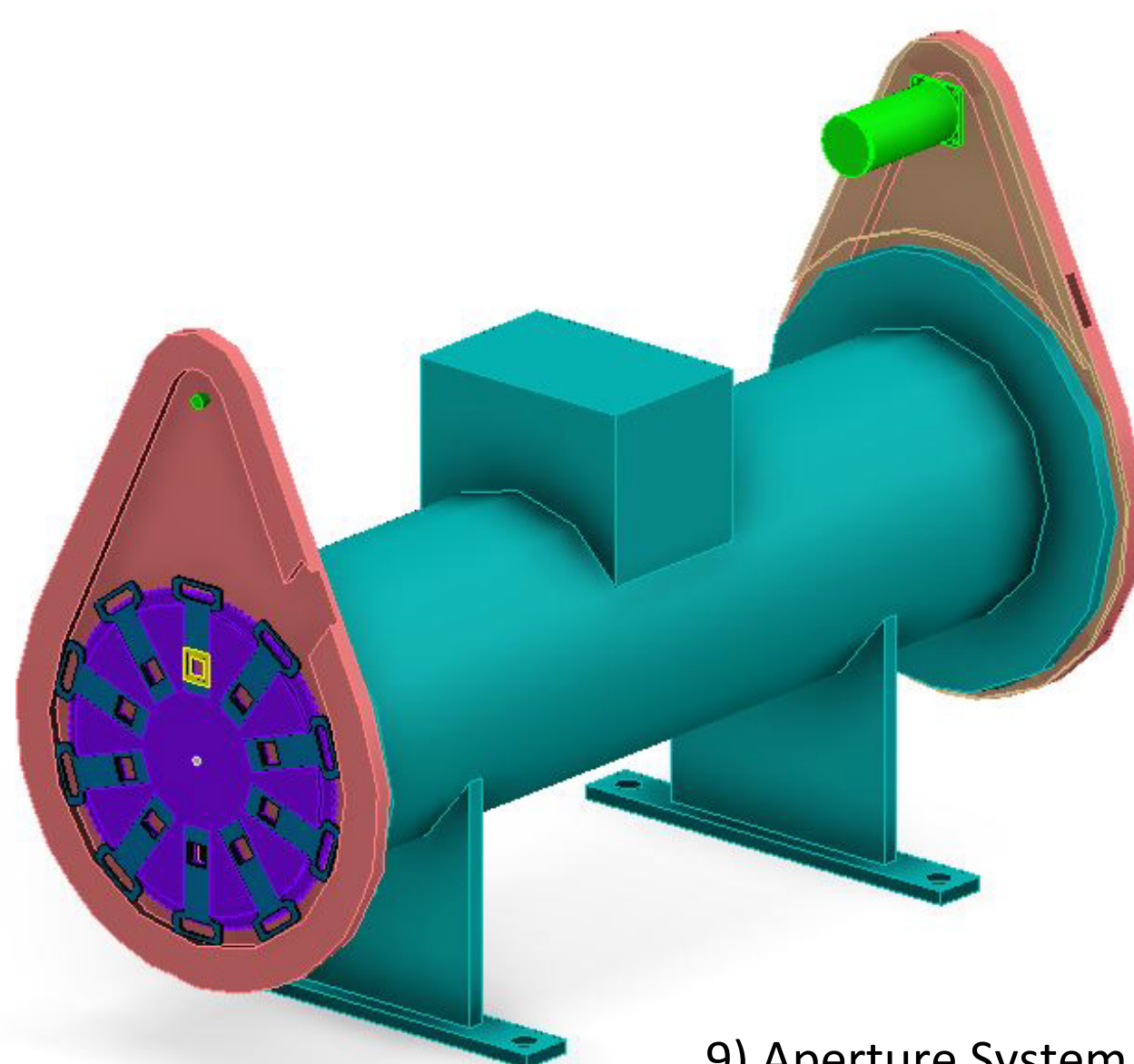
4) Detector system



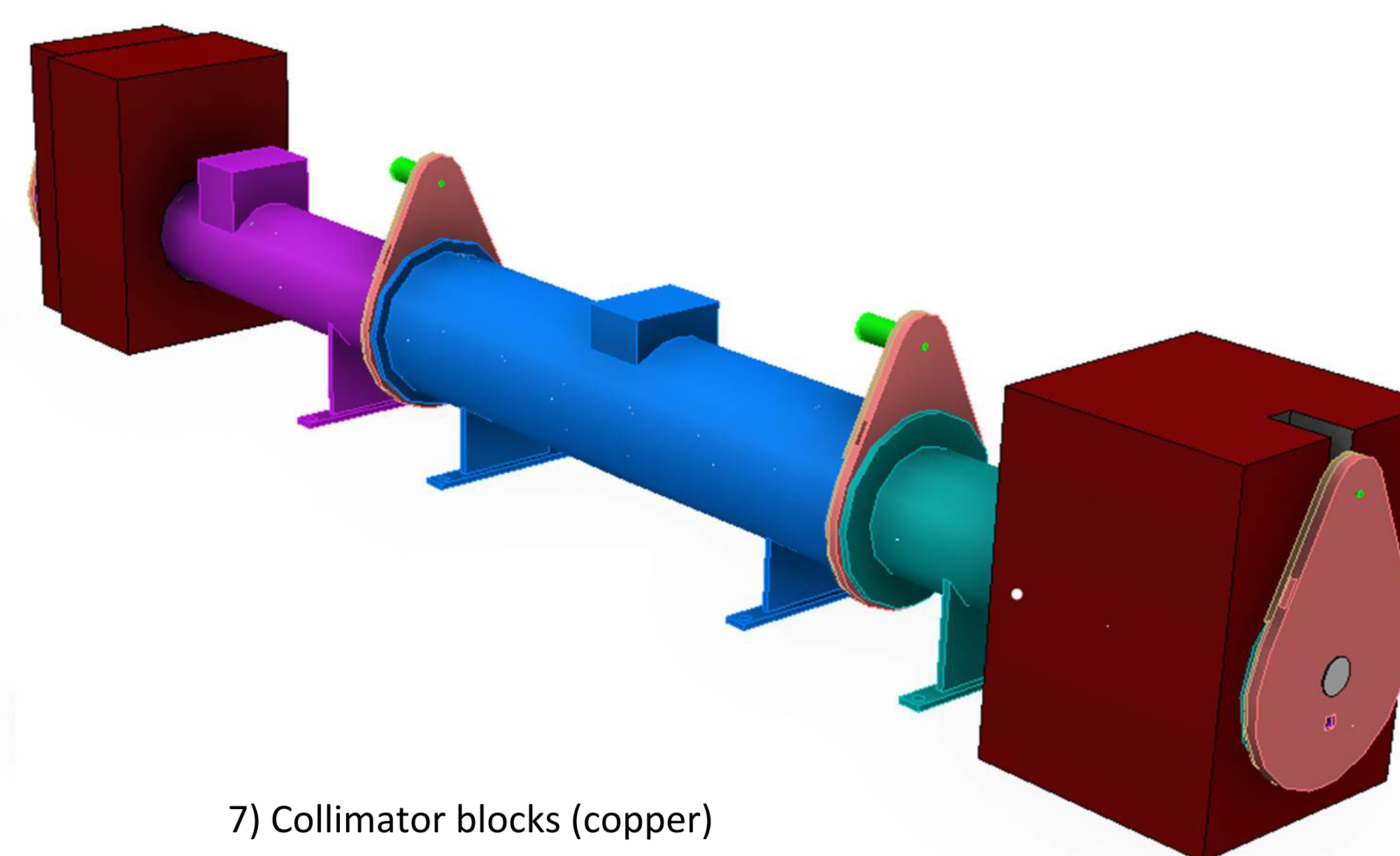
2) Chopper Pit Assembly No. 1



8) Collimation system



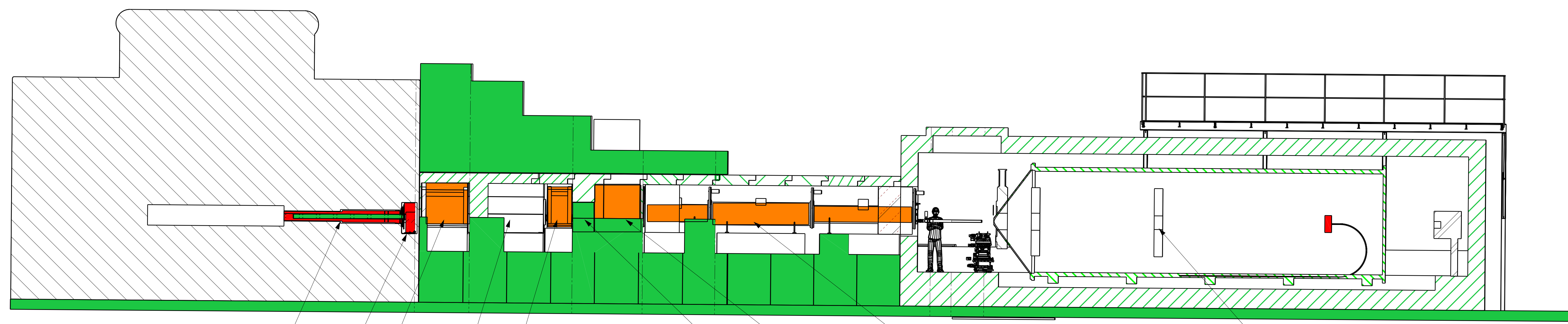
9) Aperture System



7) Collimator blocks (copper)

ASSY WEIGHT: 0.00 kg General Tolerances Linear Dimensioning: ISO 2768-mK Chamfers, Holes and Angular Dim.: ISO 2768-vK SURFACE FINISH: Min. Ra 3.2 Documentation protection as per ISO 16016		DRAWING TITLE: SUPPLEMENTARY TITLE LoKI Prelimmar assembly Prelimmar Assembly Phase I	
MODIFIED BY: claralopez DRAWN BY: claralopez CHECKED BY: [blank] APPROVED BY: [blank]	DATE: 17/06/2014 DATE: 27/11/2014 DATE: [blank] DATE: [blank]	DRAWING NUMBER: ESS-0020385.4 CHECKCELL LABEL: Preliminary CAD SOFTWARE: CATIA V6 DESIGN SITE: ESS Lund	REV: 1 SHEET: 2/2 SCALE: 1:1
This drawing is produced to ISO 1101, 8015 and 1302			





SECTION A-A (1:60)

Monolith Insert (red)  
First bender (green)

Light shutter

First Chopper Pit

Second bender

Second Chopper Pit

Detector system

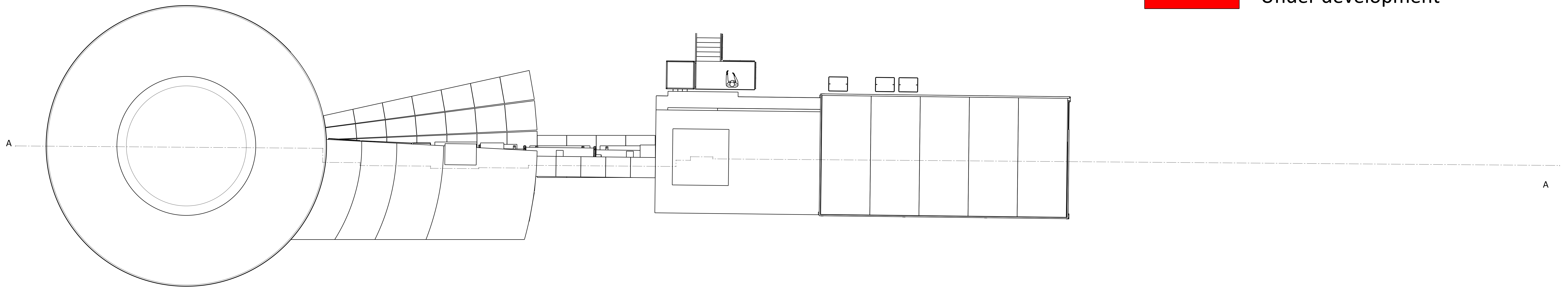
Set of collimators drums  
and aperture systems

Third Chopper pit

Secondary  
Shutter

### Risk level of components

- Has been done before
- Evolution of something done before
- Under development



<b>General Tolerances</b> Form and Position: ISO 2768-mK Chamfers, Radii and Angular Dim's: ISO 2768-vR SURFACE FINISH: Min. Ra 3.2 Documentation protection as per ISO 16016		<b>DRAWING TITLE, SUPPLEMENTARY TITLE</b> LOKI Prelimmar assembly Prelimmar Assembly Phase I		<b>DRAWING NUMBER</b> ESS-0020385.2	
MODIFIED BY: claralopez DRAWN BY: claralopez CHECKED BY:	DATE: 17/06/2014 DATE: 17/06/2014 DATE:	EUROPEAN SPALLATION SOURCE ESS LUND	PRELIMINARY	REV: 1 SHEET: 1/1	CAD SOFTWARE: CATIA V6 B A0 1:1
This drawing is produced to ISO 1101, 8015 and 1302					