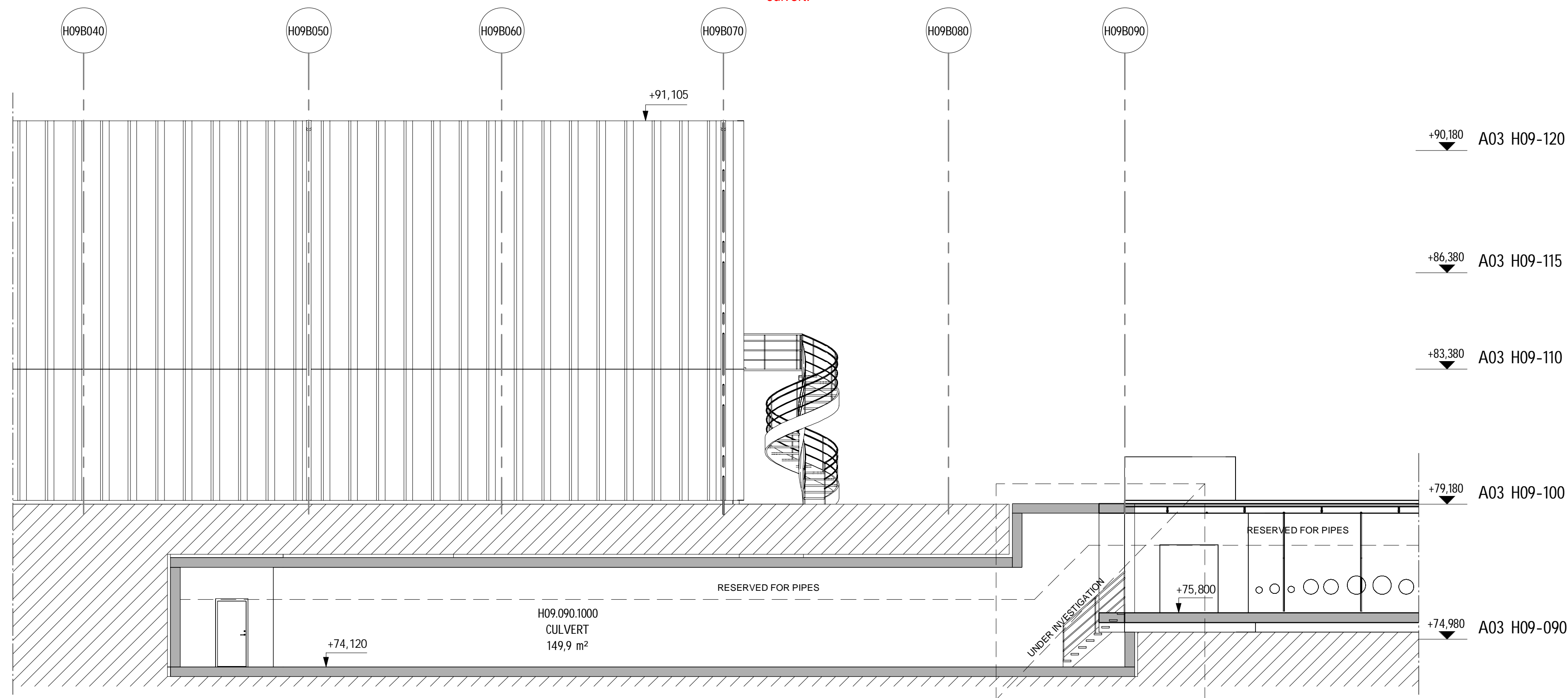


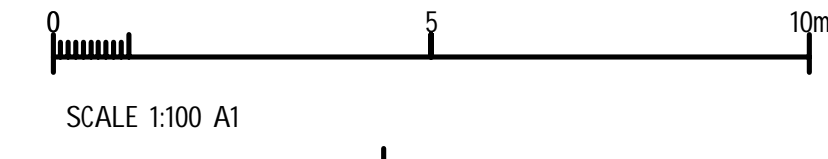
- Channel drain in stainless steel, connected to Radiological waste water system, by HVAC
- Channel drain in stainless steel, connected directly to sump, by HVAC
- Sump in concrete, by structure. Cladded with stainless steel by HVAC. Drain pump by HVAC if not stated otherwise.
- Floor drain, connected to Radiological waste water system, by HVAC
- Floor drain, connected to Conventional waste water system, by HVAC
- Waste water connection to Radiological waste water system in slab, by HVAC
- Waste water connection to Conventional waste water system in slab, by HVAC

All positions and sizes shall be designed in detail in DD. This sketch shows the principal solutions.

A40 H09-090 CULVERT



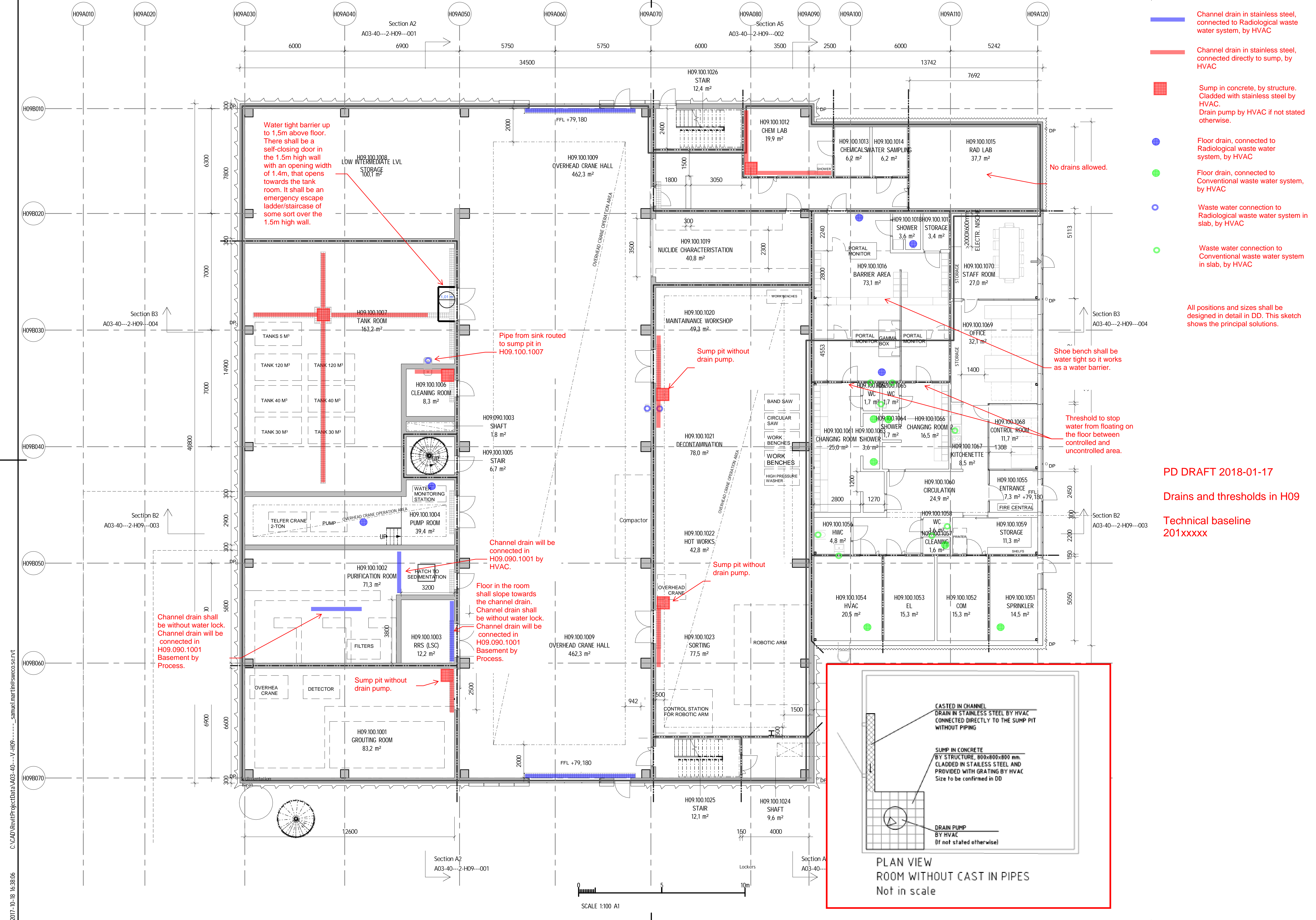
Section A10



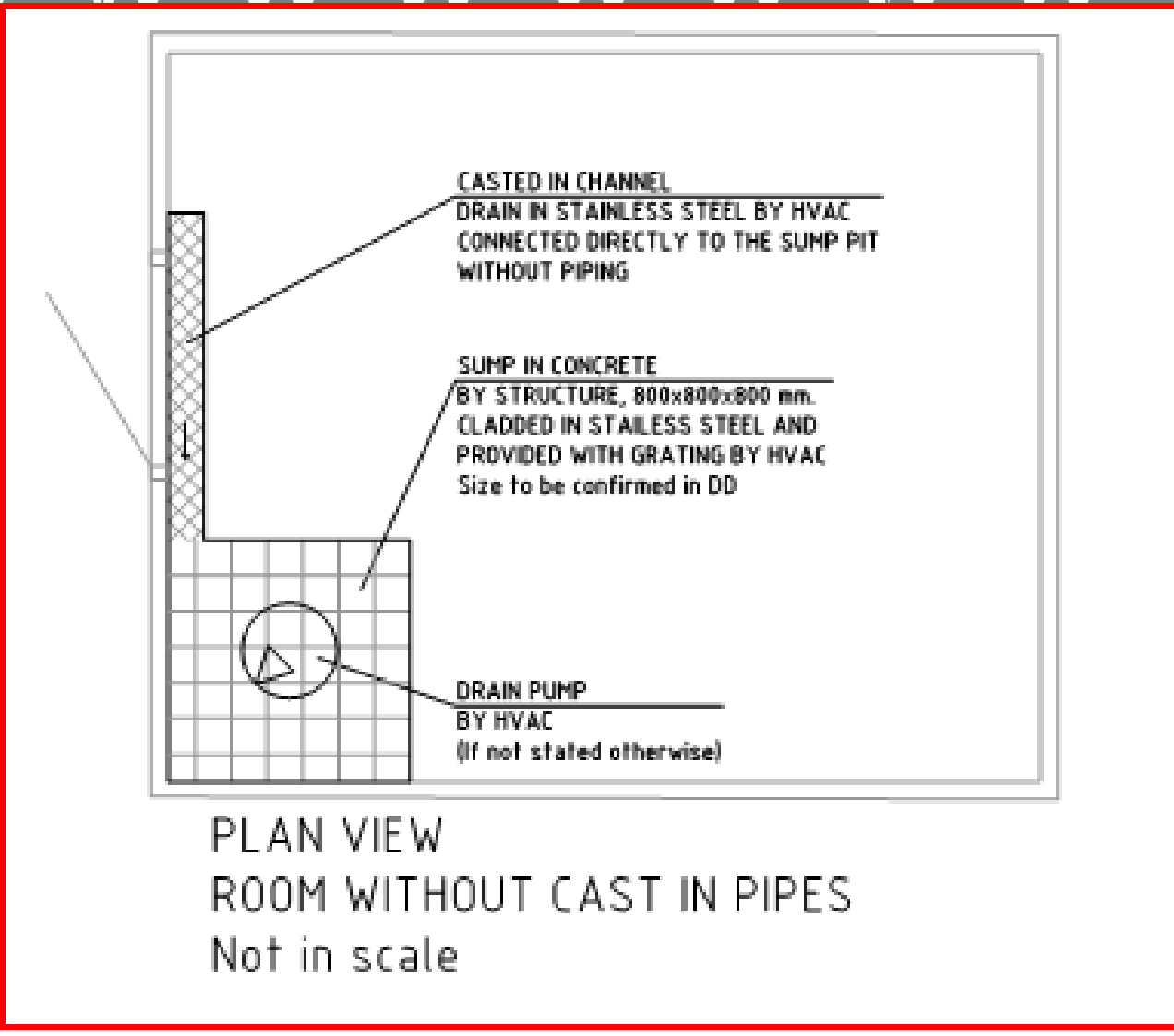
PD DRAFT 2018-01-17

Drains and thresholds in H09

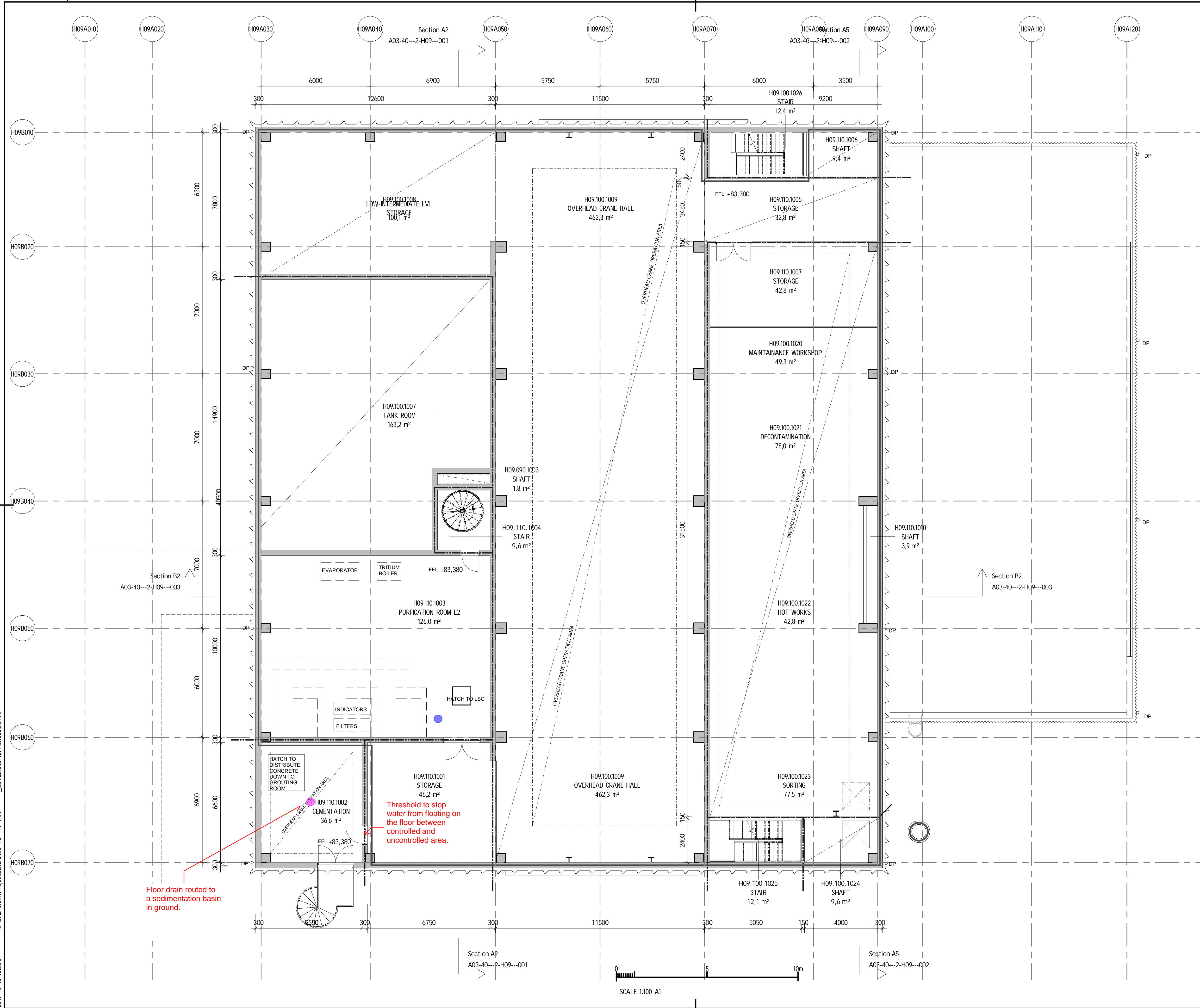
Technical baseline 201xxxxx



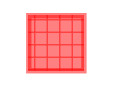






PD DRAFT 2018-01-17
 Drains and thresholds in H09
 Technical baseline
 201xxxxx



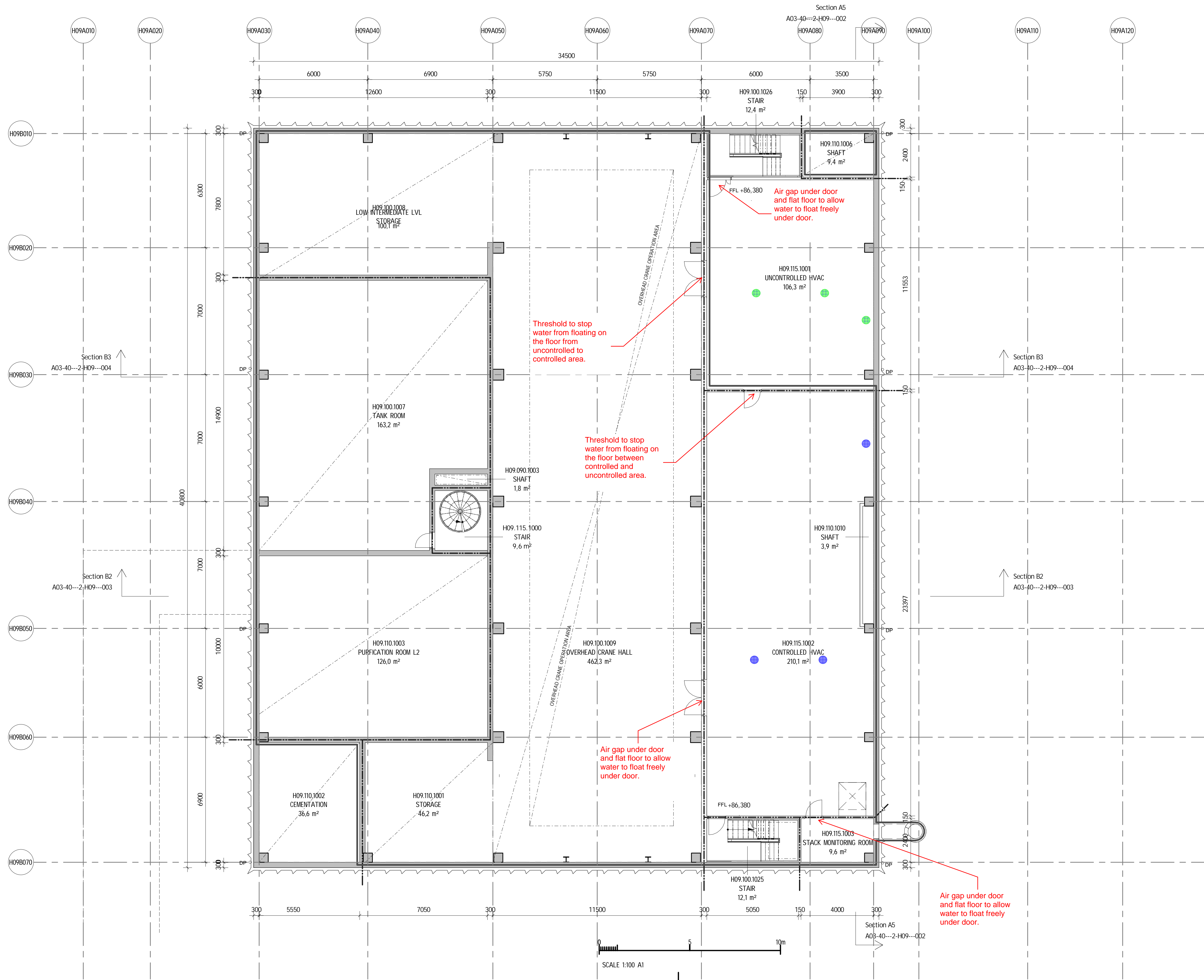
C:\CAD\Revit\ProjectData\A03-40-V-H09-...-samuel.martins@sweco.se.rvt
2017-10-18 16:38:07



-  Channel drain in stainless steel, connected to Radiological waste water system, by HVAC
-  Channel drain in stainless steel, connected directly to sump, by HVAC
-  Sump in concrete, by structure. Cladded with stainless steel by HVAC. Drain pump by HVAC if not stated otherwise.
-  Floor drain, connected to Radiological waste water system, by HVAC
-  Floor drain, connected to Conventional waste water system, by HVAC
-  Waste water connection to Radiological waste water system in slab, by HVAC
-  Waste water connection to Conventional waste water system in slab, by HVAC

All positions and sizes shall be designed in detail in DD. This sketch shows the principal solutions.

PD DRAFT 2018-01-17
Drains and thresholds in H09
Technical baseline
201xxxxx



- Channel drain in stainless steel, connected to Radiological waste water system, by HVAC
- Channel drain in stainless steel, connected directly to sump, by HVAC
- Sump in concrete, by structure. Cladded with stainless steel by HVAC. Drain pump by HVAC if not stated otherwise.
- Floor drain, connected to Radiological waste water system, by HVAC
- Floor drain, connected to Conventional waste water system, by HVAC
- Waste water connection to Radiological waste water system in slab, by HVAC
- Waste water connection to Conventional waste water system in slab, by HVAC

All positions and sizes shall be designed in detail in DD. This sketch shows the principal solutions.

PD DRAFT 2018-01-17
Drains and thresholds in H09
Technical baseline
201xxxxx