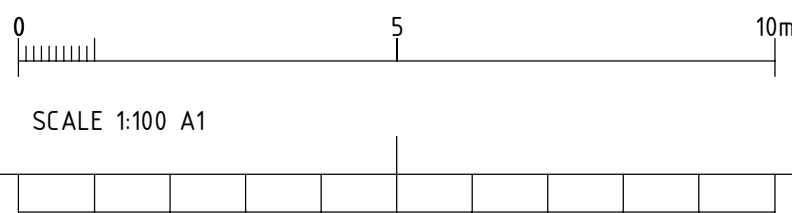
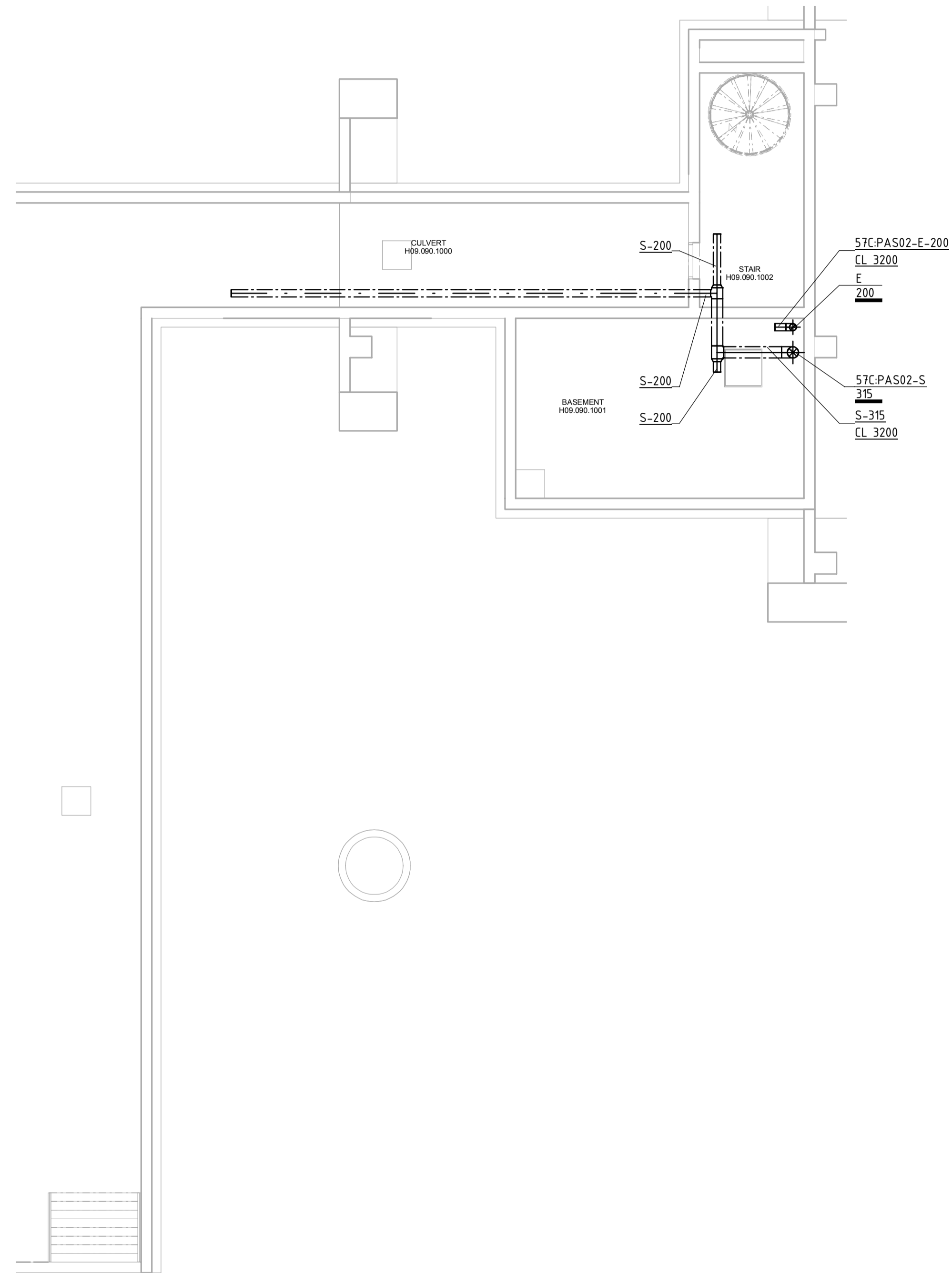


2017-12-05 15:08:09 \\EV\516\COL1\SE.se.wsp\group.com\CT\XRedirec\1\se\sp\2763\My Documents\Revit\2017\1\01-57-----V-H09-----\_se\sp\2763.rvt



- LEGEND**
- SYSTEMS**  
SYSTEMS PRECEDED BY +H09=  
UNLESS OTHERWISE STATED
- AHS AIR HANDLING UNIT SYSTEM
  - CW COOLING WATER SYSTEM SECONDARY
  - E EXTRACT AIR
  - EX EXHAUST AIR
  - O OUTDOOR AIR
  - PAS PROCESS AIR SYSTEM
  - S SUPPLY AIR
  - W DOMESTIC COLD WATER
  - HW DOMESTIC HOT WATER
  - HWS HEATING WATER SYSTEM SECONDARY
  - WWR RISK WASTE WATER
- INSULATION**
- J1 THERMAL INSULATION SERIES 1A
  - J2 THERMAL INSULATION SERIES 2A
  - V192 CELLULAR PLASTIC INSULATION 19MM
- COMPONENTS**  
COMPONENTS PRECEDED BY +H09=
- AHU AIR HANDLING UNIT
  - EAU EXTRACT AIR UNIT
  - EF EXTRACT AIR FAN
  - SAU SUPPLY AIR UNIT
- REGULATION**
- CL CENTER LEVEL

DIMENSIONS ARE GIVEN IN MM

**INSTALLATION DESIGNATION**

X = one or more letters  
0 = one or more digits

1	PRELIMINARY DESIGN	2017-10-XX	MLM
REV	REVISION TYPE	DATE	SIGN

**PRELIMINARY DESIGN**

**ESS CONVENTIONAL FACILITIES**  
WASTE STORAGE BUILDING

PLAN VIEW

SECTION

European Spallation Source ESS AB  
ESS, Tunavägen 24  
P.O. Box 116  
SE-221 00 Lund  
SWEDEN  
www.ess.se

**EUROPEAN SPALLATION SOURCE**

DESIGN COORDINATOR <b>PATRIK PERSSON</b>	BUILDING OWNER <b>BORIS KILDETOFT</b>
CONSULTANT <b>WSP SVERIGE AB</b>	PROJECT NUMBER <b>10250034</b>
DRAWN BY <b>SPN</b>	MANAGED BY <b>MLM</b>
DATE	CHECKED BY <b>MLM</b>
	APPROVED BY <b>MLM</b>

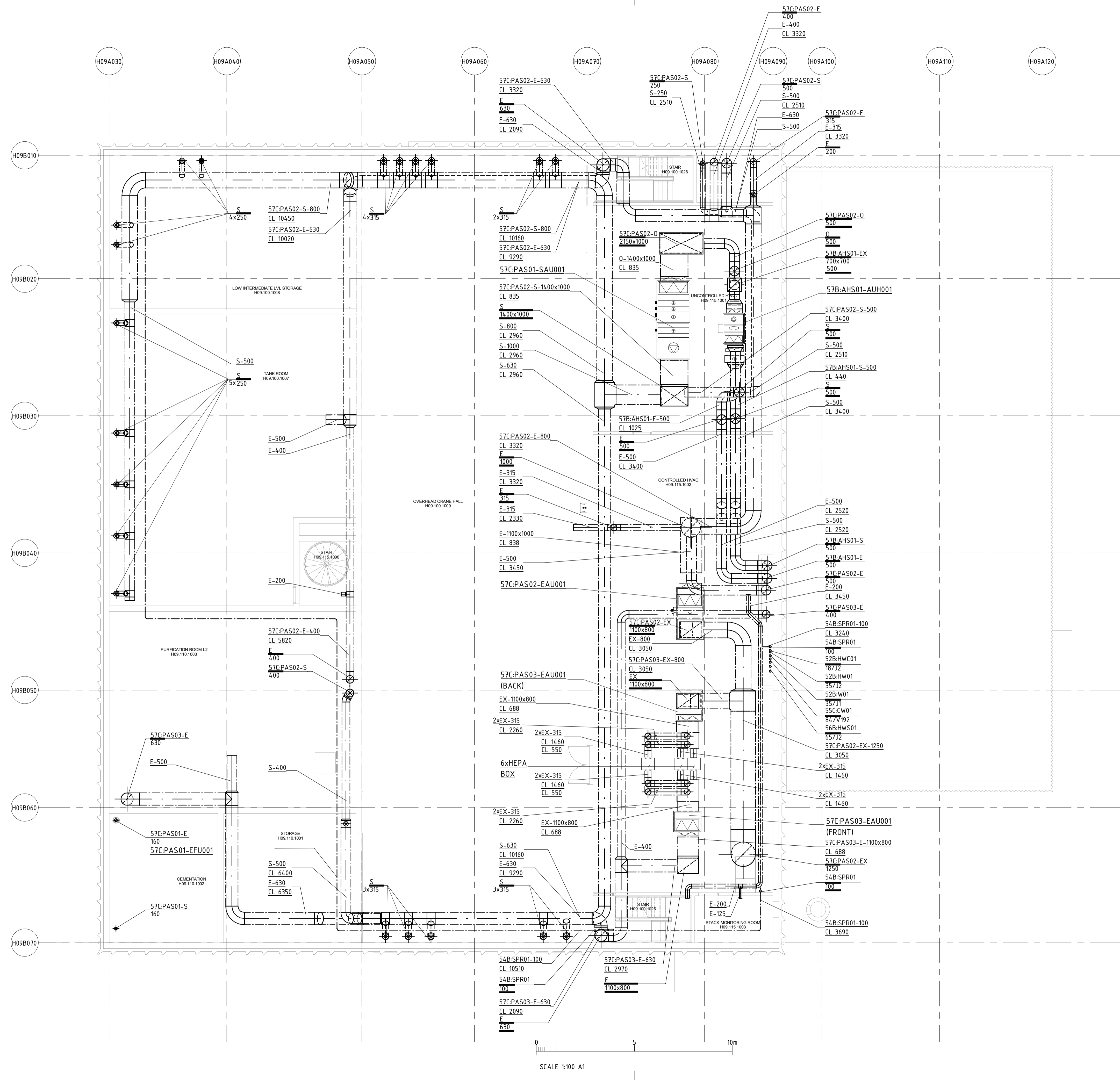
**BUILDING H09 HVAC**  
PLAN, LEVEL 090, ZONE 100  
VENTILATION, PIPING AND SPRINKLER

SCALE A1 1:100 A3 1:200	DRAWING NUMBER <b>V01-50---1-H09090100</b>	REV <b>1</b>
-------------------------------	---	-----------------





2017-12-05 15:08:25 \\EV5160015E.se.wspgroup.com\CTXR\refr\14\sepp\2763\My Documents\Revit\2017\01-51-V-H09-sepp\2763.rvt



- LEGEND**
- SYSTEMS**  
SYSTEMS PRECEDED BY +H09=  
UNLESS OTHERWISE STATED
- AHS AIR HANDLING UNIT SYSTEM
  - CW COOLING WATER SYSTEM SECONDARY
  - E EXTRACT AIR
  - EX EXHAUST AIR
  - O OUTDOOR AIR
  - PAS PROCESS AIR SYSTEM
  - S SUPPLY AIR
  - W DOMESTIC COLD WATER
  - HW DOMESTIC HOT WATER
  - HWS HEATING WATER SYSTEM SECONDARY
  - WWR RISK WASTE WATER
- INSULATION**
- J1 THERMAL INSULATION SERIES 1A
  - J2 THERMAL INSULATION SERIES 2A
  - V192 CELLULAR PLASTIC INSULATION 19MM
- COMPONENTS**  
COMPONENTS PRECEDED BY +H09=
- AHU AIR HANDLING UNIT
  - EAU EXTRACT AIR UNIT
  - EF EXTRACT AIR FAN
  - SAU SUPPLY AIR UNIT
- REGULATION**
- CL CENTER LEVEL
- DIMENSIONS ARE GIVEN IN MM**
- INSTALLATION DESIGNATION**
- System + serial number
  - Dimension
  - Insulation
- X0 - 0 / X0  
Ex HWS01-65/J1
- X = one or more letters  
0 = one or more digits

1	PRELIMINARY DESIGN	2017-10-XX	MLM
REV	REVISION TYPE	DATE	SIGN
<b>PRELIMINARY DESIGN</b>			
<b>ESS CONVENTIONAL FACILITIES WASTE STORAGE BUILDING</b>			
<p style="text-align: right;">PLAN VIEW</p>			
<p style="text-align: right;">SECTION</p>			
<p>European Spallation Source ESS AB ESS, Tunavägen 24 P.O. Box 116 SE-221 00 Lund SWEDEN www.ess.se</p>			
<p>DESIGN COORDINATOR <b>PATRIK PERSSON</b></p>		<p>BUILDING OWNER <b>BORIS KILDETOFT</b></p>	
<p>CONSULTANT <b>WSP SVERIGE AB</b></p>		<p>PROJECT NUMBER <b>10250034</b></p>	
<p>DRAWN BY <b>SPN</b></p>	<p>MANAGED BY <b>MLM</b></p>	<p>CHECKED BY <b>MLM</b></p>	<p>APPROVED BY <b>MLM</b></p>
<p><b>BUILDING H09 HVAC PLAN, LEVEL, 115, ZONE100 VENTILATION, PIPING AND SPRINKLER</b></p>			
<p>SCALE A1 1:100 A3 1:200</p>		<p>DRAWING NUMBER <b>V01-50---1-H09115100</b></p>	
			<p>REV <b>1</b></p>

